

*Jornal*

DE

MODINHAS

*Com acompanhamento de Cravo*

PELOS MILHORES AUTORES

*DEDICADO*

*A Sua Alteza Real  
Princesa do Brazil*

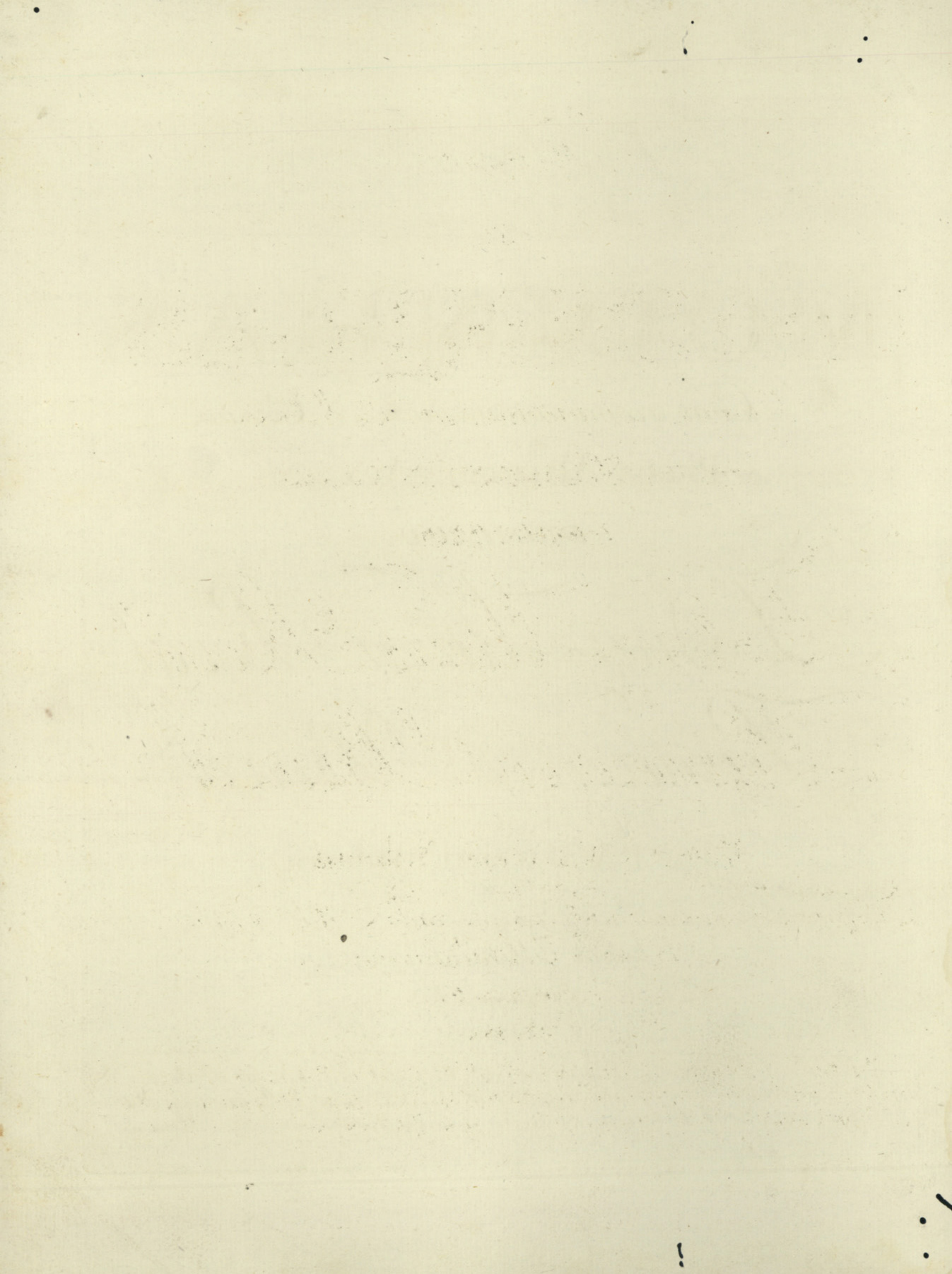
Por P.A. Marchal Milcent.

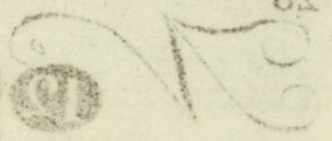
*No primeiro dia e no Quinze de cada Mez, Sahirá  
huma Modinha nova.*

*Preço 200. R.º*

LISBOA

*Na Real Fabrica e Armazem de Muzica no Largo de Jezus  
onde se podera Abonar para a Coleção de cada anno pella quantia de 2880.  
na mesma Real Fabrica se achá toda qualidade de Muzica*





*Alto de Capa de Colón de...*

This image shows a page of handwritten musical notation on aged, yellowed paper. The score is organized into several systems, each containing multiple staves. The notation includes various note values, stems, and clefs, characteristic of 18th or 19th-century manuscript notation. The ink is dark but shows some fading and bleed-through from the reverse side of the page. The paper has a mottled texture and some minor staining, particularly at the bottom left corner.

Moda da Copa das Caldas del Sig.<sup>o</sup> Joze Palomino

**N** 12

ANDANTE

Con Molto

Quem d'Amor quem d'Amor ten ta Squi

var se quem d'Amor tan ta Squi var..... se Pu nha A

ler ta ponha aler ta seu... cui da..... do

1.<sup>o</sup> Amor anda disfar ca. do pela Copa apasse ar nem a

qui nem a qui nem a qui nem a quinos dei xaa

mor livre mente res pi rar

naõ nos dei xa res pi rar.

2  
*Vem de mil traicoens armado,  
 Aumentando as nobas magoas,  
 Nas quentes Sulfureas agoas  
 Seu veneno mixturar.  
 Estrivº Nem a qui & cª.*

3  
*Cuidei sêr a Copa hum Templo  
 A Saude consagrado.  
 Mas Amor lhõ tem roubado,  
 Nelle ergueo o seu Altar.  
 Nem a qui & cª.*

4  
*Vamos ja, tristes Amantes,  
 Pois o quer fado mesquinho,  
 Sobre o redondo Pocinho,  
 Os Coraçõens immolar.  
 Nem a qui & cª.*

(10)

Handwritten musical notation on a five-line staff. The notation includes various note values (quarter, eighth, and sixteenth notes), rests, and bar lines. The ink is dark and the handwriting is somewhat cursive. The staff is positioned in the upper third of the page.

Handwritten musical notation on a five-line staff, continuing from the previous system. It features similar note values and rests, with some slurs and ties. The staff is positioned in the middle third of the page.

Handwritten musical notation on a five-line staff, continuing the piece. The notation is consistent with the previous systems, showing a progression of notes and rests. The staff is positioned in the lower third of the page.

Faint, illegible handwritten text or notes at the bottom of the page, possibly bleed-through from the reverse side or a separate section of the manuscript.