

De Ernesto Vieira
N.º 1658-1261

621

Crus Saudade

Moderato

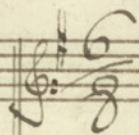
Com Acompanhamento de Piano-forte

Por

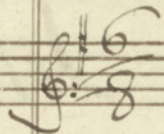
Mathias Jacob Osterhel



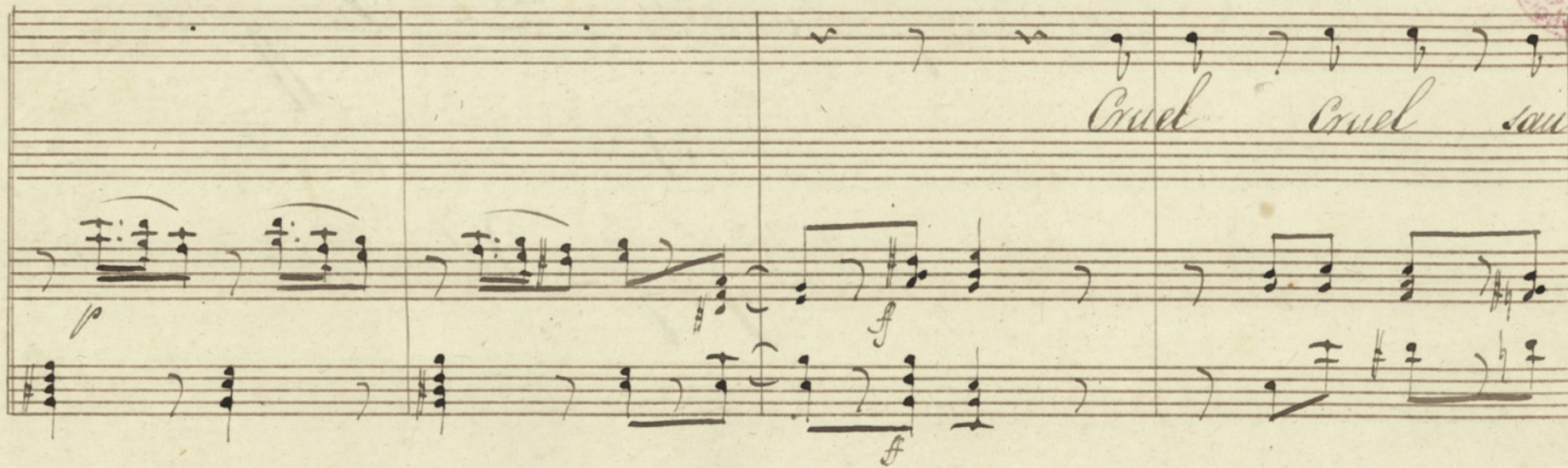
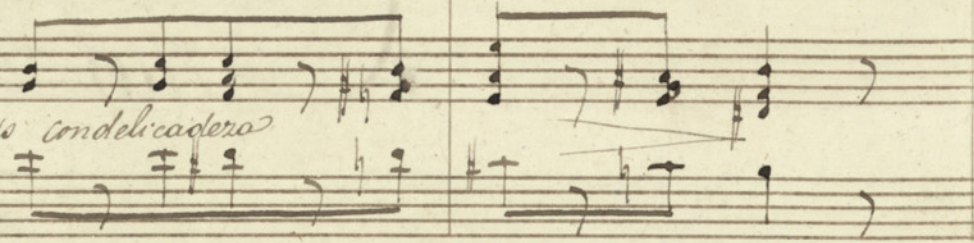
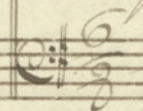
Canto



Andante Lento



p con delirado



da — de Que me a com me tes Que me a com me = tes

The first system of the handwritten musical score consists of three staves. The top staff is a vocal line in treble clef with a key signature of one sharp (F#). It contains the lyrics "da — de Que me a com me tes Que me a com me = tes" written in cursive. The middle and bottom staves are for piano accompaniment, with the middle staff in treble clef and the bottom staff in bass clef. The piano part features chords and moving lines that support the vocal melody.

Em que a = go = ni = as Tu me não me = tes

The second system of the handwritten musical score also consists of three staves. The top staff continues the vocal line with the lyrics "Em que a = go = ni = as Tu me não me = tes" in cursive. The piano accompaniment continues on the middle and bottom staves, providing harmonic support for the vocal line. The notation includes various note values, rests, and articulation marks.

Dolce

Cru - el sau - da - de Que me a com

me tes em que agi - ni - as tu me não me tes

Allegro
cruel cruel cruel Pa ra' meus bra - cos tor na oh que

Allegro
rida se con ser - var que res se con ser var

que res a minha si = da

The first system of the handwritten musical score consists of three staves. The top staff is a vocal line in treble clef with a key signature of one sharp (F#) and a common time signature. It contains five measures of music with lyrics written below. The lyrics are "que res a minha si = da". The middle staff is a piano accompaniment in treble clef, and the bottom staff is in bass clef. Both piano staves contain chords and some melodic lines corresponding to the vocal line.

se com ser rar que res a mi = = nha si = da

The second system of the handwritten musical score also consists of three staves. The top staff is a vocal line in treble clef, continuing from the first system. It contains five measures of music with lyrics "se com ser rar que res a mi = = nha si = da". The middle staff is a piano accompaniment in treble clef, and the bottom staff is in bass clef. The piano accompaniment includes chords and some melodic lines. The word "com=" is written at the end of the bottom staff.

Handwritten musical score for the first system. It consists of three staves: a vocal line at the top and a piano accompaniment below. The vocal line begins with a treble clef and a key signature of one flat (B-flat). The piano accompaniment starts with a bass clef and a common time signature. The music is written in a cursive, handwritten style. The first staff contains several measures of music, including a melodic line with eighth and sixteenth notes, and a bass line with chords and single notes. There are some handwritten annotations, such as 'ost' written vertically below the piano accompaniment in the first few measures.

Handwritten musical score for the second system. It features a vocal line with lyrics and a piano accompaniment. The lyrics are written in a cursive hand below the vocal line. The piano accompaniment is written on a single staff below the lyrics. The lyrics are: "Quem te se-pa = ra" and "De mim te con = de o". The musical notation includes a vocal line with a treble clef and a piano accompaniment with a bass clef. The piano accompaniment consists of chords and single notes, with some handwritten annotations like 'ost' written vertically below the notes.

Quem te se-pa = ra De mim te con = de o

Ec - co Repe - te a - onde a onde Quem te se -

The first system of the handwritten musical score consists of three staves. The top staff is a vocal line in treble clef with a key signature of one sharp (F#) and a common time signature. The lyrics are written below the notes. The middle and bottom staves are piano accompaniment staves, with the bottom staff in bass clef. The piano part features chords and some melodic lines.

pa - ra de mim te esconde Quem te se pa - ra

The second system of the handwritten musical score also consists of three staves. The top staff is a vocal line in treble clef, continuing the melody from the first system. The lyrics are written below the notes. The middle and bottom staves are piano accompaniment staves, with the bottom staff in bass clef. The piano part continues with chords and melodic lines.

de mim te es-conde O E-co Re-pe-te a-on de a-

The first system of the handwritten musical score consists of three staves. The top staff is a vocal line in G-clef with a treble clef and a key signature of one flat (B-flat). The lyrics are written below the notes. The second and third staves are piano accompaniment staves, with the second staff in G-clef and the third staff in C-clef. The accompaniment features a simple harmonic structure with chords and single notes.

on - de

The second system of the handwritten musical score continues the piece. It also consists of three staves. The top staff is the vocal line, with the lyrics "on - de" and a final note. The second and third staves are the piano accompaniment, showing a continuation of the harmonic pattern from the first system, ending with a double bar line.

Et co Re-pe-te Re-pe-te a onde

The first system of a handwritten musical score. It consists of three staves. The top staff is a vocal line in treble clef with a key signature of one sharp (F#) and a common time signature (C). The lyrics are written below the notes: "Et co Re-pe-te Re-pe-te a onde". The middle staff is a piano accompaniment in treble clef, featuring chords and melodic lines. The bottom staff is a piano accompaniment in bass clef, showing a simple harmonic line. The system concludes with a whole note chord in the vocal line.

Et co Re-pe-te a onde a on

The second system of the handwritten musical score, continuing from the first. It also consists of three staves. The vocal line (top staff) continues with the lyrics "Et co Re-pe-te a onde a on" and ends with a long note followed by a dotted line. The piano accompaniment in the middle staff continues with chords and melodic patterns. The bass line in the bottom staff features a descending melodic line with slurs. The system ends with a double bar line and repeat signs in both the middle and bottom staves.

Handwritten musical score on three staves. The first staff begins with a treble clef, a key signature of one sharp (F#), and the word "de" written below the staff. The music consists of several measures, including a melodic line in the second staff and a bass line in the third staff. The notation includes notes, rests, and a fermata.



240

