

22 vol. 8

Benedictus A duo ya 5

Com Violines

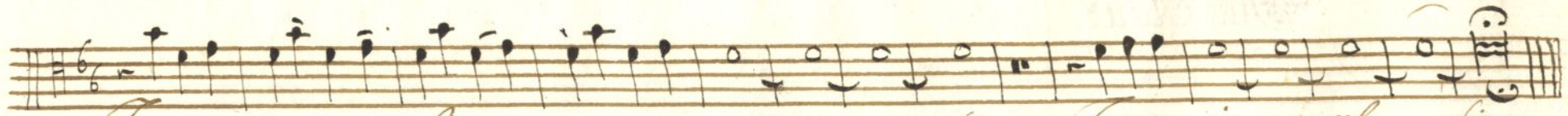
Del Sig.^o Jozé Ant.^o Carlos

microfilmado
6-2-96

22⁸
ms

Handwritten musical score, first system, consisting of four staves. The music is in common time (C) and 6/8 time. The notation includes various rhythmic values, accidentals, and fingerings. The first staff begins with a treble clef and a common time signature. The second staff has a treble clef and a 6/8 time signature. The third and fourth staves have a common time signature. The system concludes with a double bar line and a repeat sign.

Handwritten musical score, second system, consisting of five staves. The music is in common time (C) and 6/8 time. The notation includes various rhythmic values, accidentals, and fingerings. The first staff begins with a treble clef and a common time signature. The second staff has a treble clef and a 6/8 time signature. The third, fourth, and fifth staves have a common time signature. The system concludes with a double bar line and a repeat sign.



Esana in es cel - - - - - Sis Esana in es cel Sis.

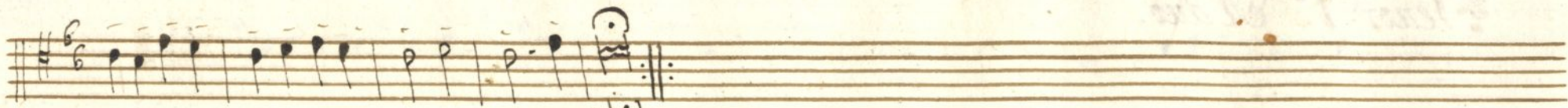


Tenor 1.º Adus.

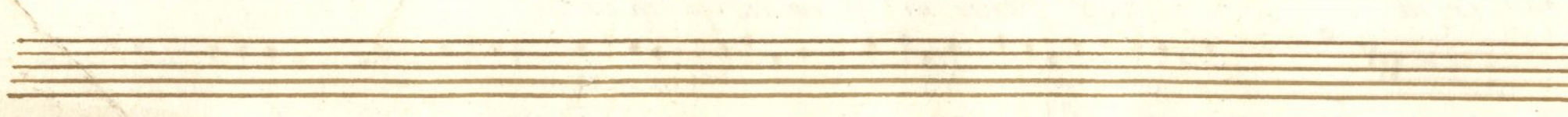
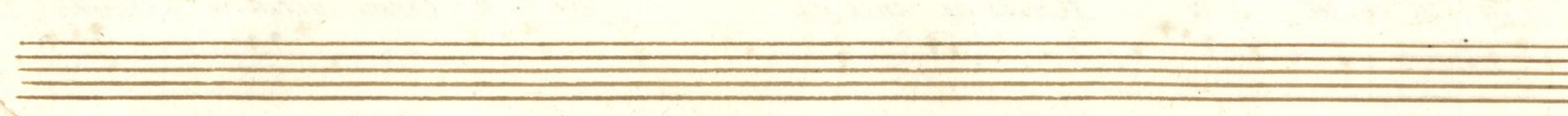
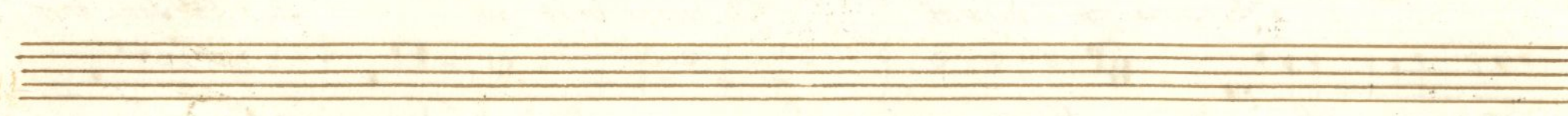
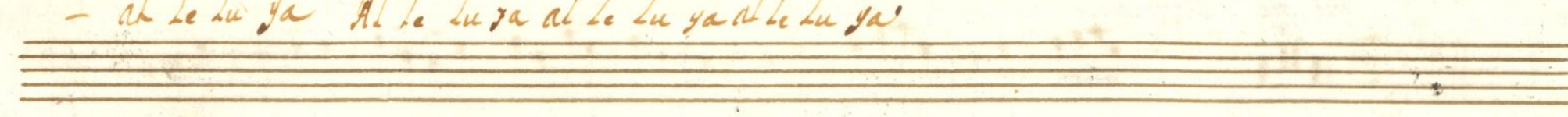
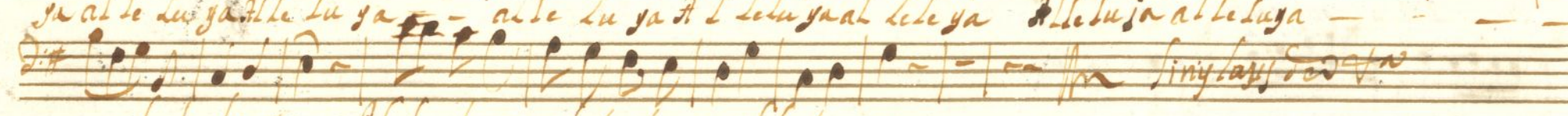
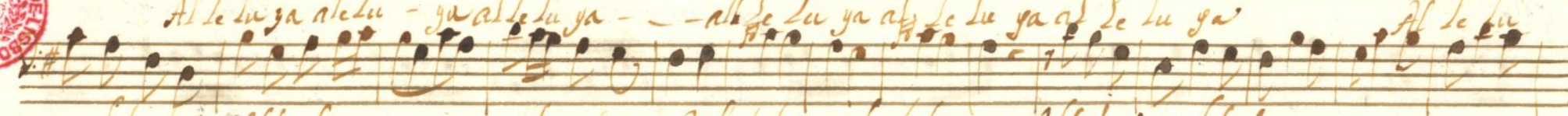
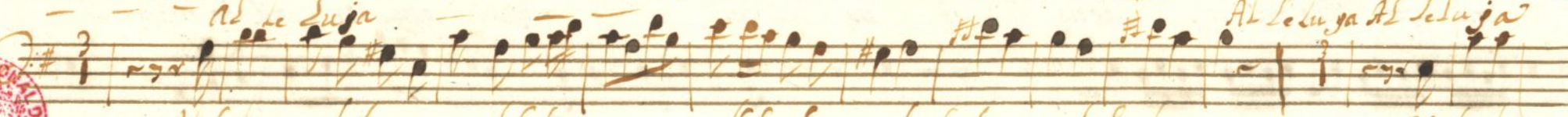
Be ne di ctus be ne di ctus qui ve nit in no mine Do mi ni. bene di ctus qui ve nit in no mine Do mi ni qui veni in no mine Domini be ne dictus qui veni in no

All.

mi ne Domini.
 Hosanna in ex cel sis Hosanna in ex cel sis Hosanna in ex cel sis
 Hosanna in ex cel sis Hosanna in ex cel sis Hosanna in ex cel sis
 Hosanna in ex cel sis Hosanna in ex cel sis Hosanna in ex cel sis



mao
luc



Violins V. Adus.

22/18

22
115

The first system of the handwritten musical score consists of five staves. The first staff begins with a treble clef, a key signature of one sharp (F#), and a 3/4 time signature. The music is written in a fluid, cursive style with various note values, rests, and slurs. The second staff contains a first ending bracket labeled '1. to'. The third staff features a second ending bracket labeled '2. to'. The fourth and fifth staves continue the melodic and harmonic development of the piece.

The second system of the handwritten musical score consists of four staves. The first staff begins with a treble clef, a key signature of one sharp (F#), and a 3/4 time signature. The music continues with various note values, rests, and slurs. The second staff contains a first ending bracket labeled '1. to'. The third staff features a second ending bracket labeled '2. to'. The fourth staff concludes the system with a double bar line and repeat dots.

4

Handwritten musical notation on a single staff. The notation begins with a treble clef and a key signature of two flats (B-flat and E-flat). The music consists of several measures of notes, including quarter notes, eighth notes, and rests. There are some markings above the staff, possibly indicating fingerings or ornaments. The notation ends with a double bar line and a fermata-like symbol.

Ten empty musical staves, each consisting of five horizontal lines, arranged vertically below the first staff.

Alto Adus. Violino V.

22/18

11
P
V
MS

The first system of the handwritten musical score consists of five staves. The first staff begins with a treble clef, a key signature of one flat (B-flat), and a 3/4 time signature. The music is written in a cursive hand and includes various rhythmic values such as eighth and sixteenth notes, as well as rests. A triplet of eighth notes is marked with a '3' above it in the second staff. The system concludes with a double bar line and a fermata over the final note.

The second system of the handwritten musical score consists of four staves. It begins with a treble clef, a key signature of one flat, and a 3/4 time signature. The notation continues with a variety of rhythmic patterns, including dotted notes and beams. A fermata is placed over a note in the second staff. The system ends with a double bar line and a fermata over the final note.

Handwritten musical notation on two staves. The top staff begins with a treble clef, a 5/4 time signature, and a key signature of one sharp (F#). It contains several measures of music, including a whole rest, a half note, and a series of eighth notes. The bottom staff begins with a treble clef and contains a few measures of music, ending with a double bar line and repeat dots. The paper is aged and shows some staining.

Ten blank musical staves, each consisting of five horizontal lines, arranged vertically on the page. The paper is aged and shows some staining.

