

F.C.R. ms 213.3

Organo

Salutaris hostiae

Santum Ergo a 2<sup>da</sup>

Deo Sig

Antonia Sedeschi

Exarum de <sup>Emo</sup> Sr. Marquez de Borba



*Salutaris hortia*  
*Grave*  $\text{C}\flat$   $\frac{3}{4}$

5 6 6 6 5

5 5 5 4 3 5

6 7 6 5 6 4 3 6 6 4 3

6 6 4 3

*Allegro*  $\text{C}\flat$   $\frac{3}{4}$   
*Tantum Ergo*

6 5 6 7 6 7 6

5 4 3 6 6 9 6 6 4 3

2 6 4 3 4 6 9 5

6 5 6 4 3 6 4 3 6 5

5 6 7 6 5 4 3 6 6

9 6 6 4 3 2 6 4 3

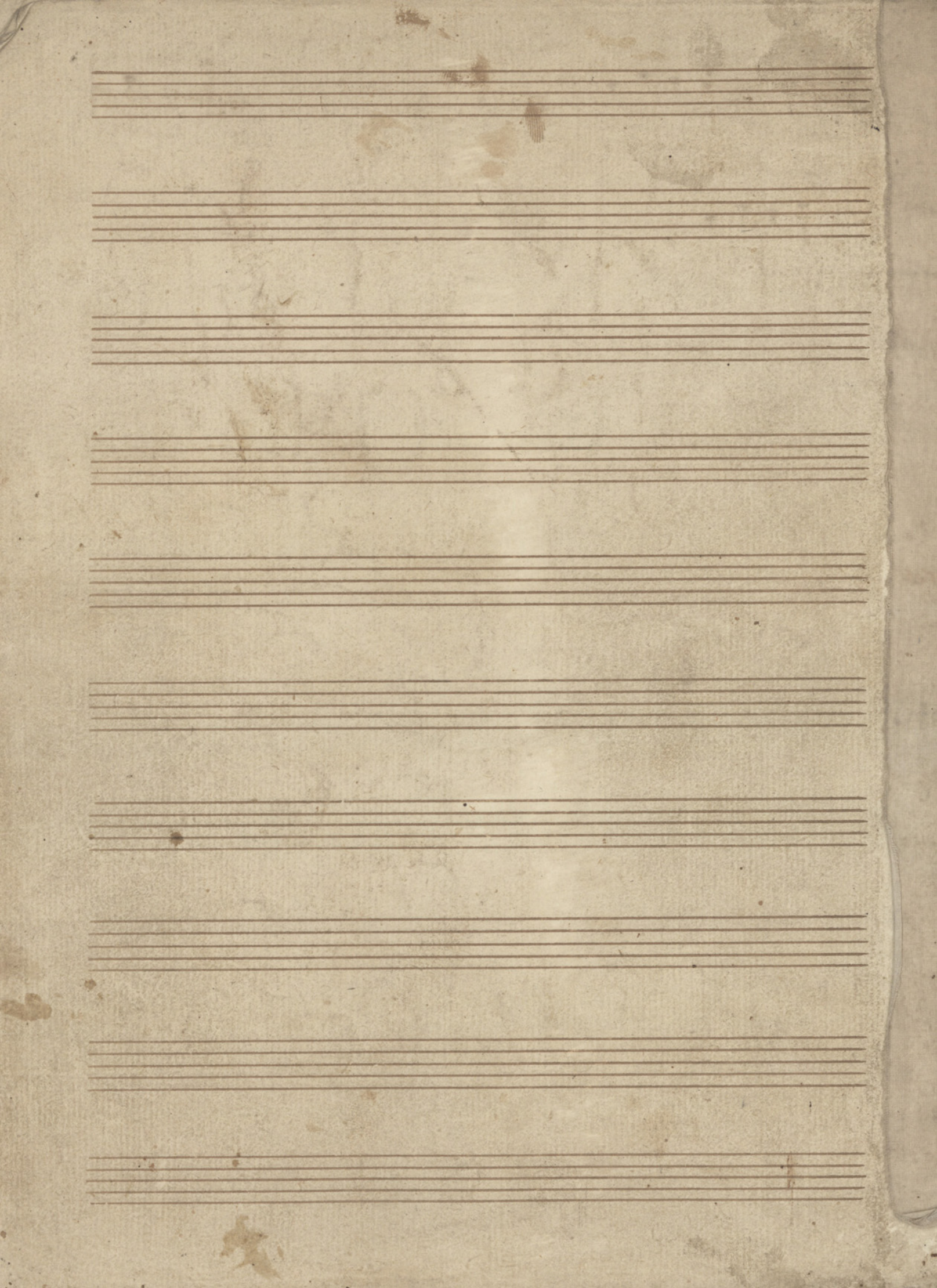


Handwritten musical notation on a single staff. The notation includes a treble clef, a key signature of one flat (B-flat), and a common time signature (C). The melody consists of a sequence of notes: a whole note, followed by four quarter notes, then a half note, a quarter note, a half note, a quarter note, a half note, a quarter note, and a final quarter note. Below the staff, there are handwritten numbers: 4, 6, 9, 7, 6, 4, 3, and 7, which likely represent chord numbers or fret numbers.

Handwritten musical notation on a single staff. The notation includes a treble clef, a key signature of one flat (B-flat), and a common time signature (C). The melody consists of a sequence of notes: a whole note, followed by four quarter notes, then a half note, a quarter note, a half note, a quarter note, and a final quarter note. Below the staff, there are handwritten numbers: 6, 4, 4, 3, and 7, which likely represent chord numbers or fret numbers.

Seven empty musical staves, each consisting of five horizontal lines, arranged vertically on the page.







# Soprano a 2<sup>o</sup> Concerto

*Frave*  
 O Salu. ta - ris hos ti - a  
 que Coe li - pandis. pandis - O sti - um  
 bella - premunt hos ti li a - da robur da  
 robur fer au - xili - um fer au  
 xili um Amen

*Sary*  
 Tantum ergo Sacra. mentum  
 Vene remur cernu i et antiquum  
 docu mentum novo cedat ri tu i  
 prestet fides supple mentum sensuum de



se-ctu-i Ge-ni-to-ri Ge-ni-to  
que laus et ju-bi-la-ti-o salus  
honor virtus quoque sit et be-ne-di-cti-o  
pro-ce-denti ab-u-que compar  
sit lau-da-ti-o Amen

The image shows a handwritten musical score on aged paper. It consists of six staves of music, each with a treble clef and a key signature of one flat (B-flat). The lyrics are written in a cursive hand below the notes. The text is Latin and appears to be a portion of a Mass or a similar liturgical text. The paper shows signs of age, including foxing and some staining.

Finis

Panem de celo prestitisti ei



# Missa Concert

*Grave*

O Salu-ta-ris hos-ti-a  
 quae Celi pandis quae Celi pandis. O sti-  
 um bella premunt bella premunt hos-ti-lia da-  
 robur da robur. fer au-cili-um

Fer au-cili-um Amen

*Larg*

Tantum ergo Sacra-mentum  
 ve-ne-remur: cernu-i et an-ti-quum  
 do-cu-mentum novo cedat ri-tu-i  
 pre-stet fides sup-ple-mentum sensu-um de-







# Tenor a 6 Concerto

*Grave*  $\frac{3}{4}$

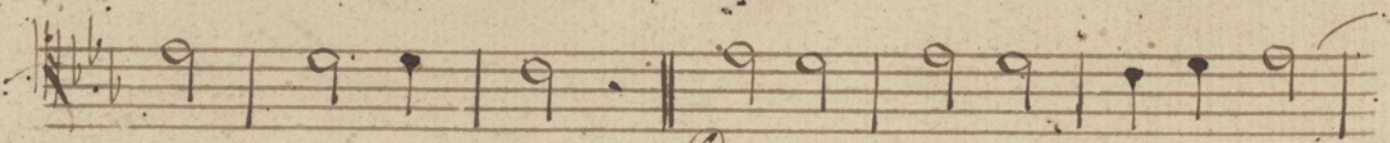
O Salu-ta-ris hosti-a  
 quae Coe-li pandis pandis - Os-ti-  
 um bella - premunt premunt hostili  
 da robur da robur fer-au - ci li um

Ser au - ci li um Amen

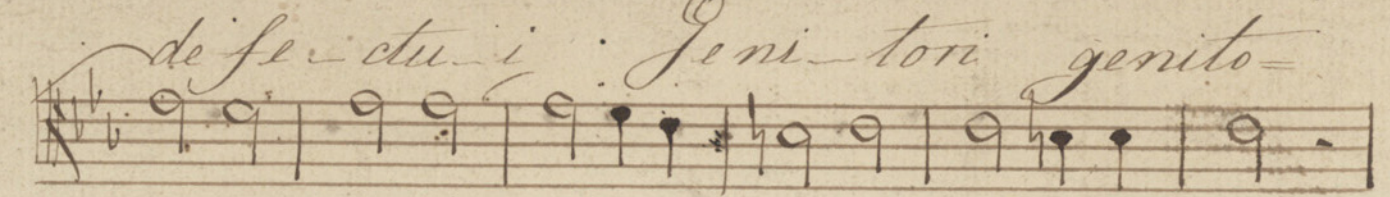
*Larg*  $\frac{2}{4}$

Tantum ergo sacramen - tum  
 ve - ne - remur cer - nui et an-  
 tiquum docu-mentum novo cedat ri - tu  
 prestet fides supple-mentum sensuum

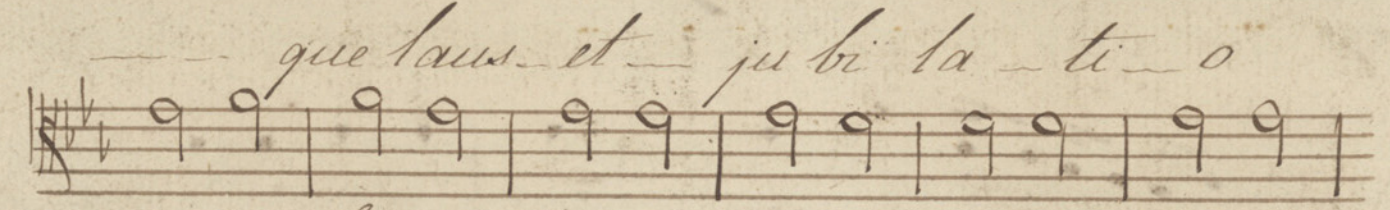




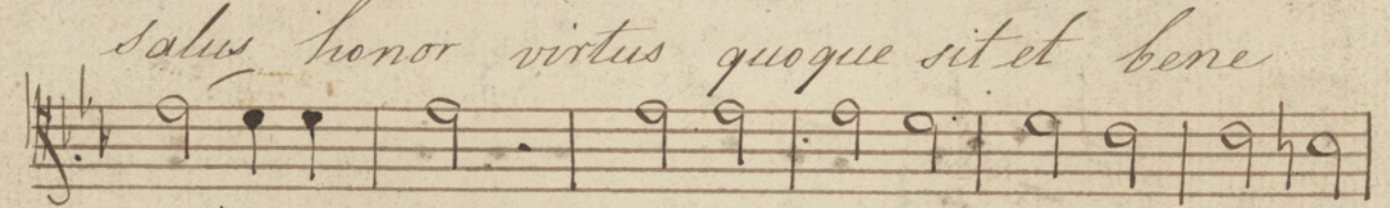
Musical staff with notes and rests.



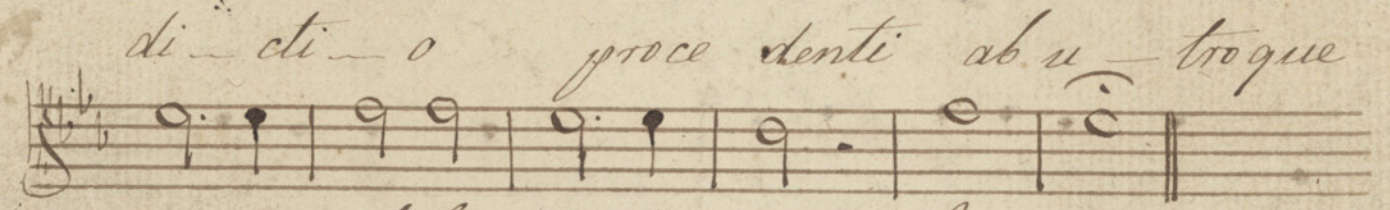
de fe - ctu - i : Ge - ni - tori ge - ni - to -



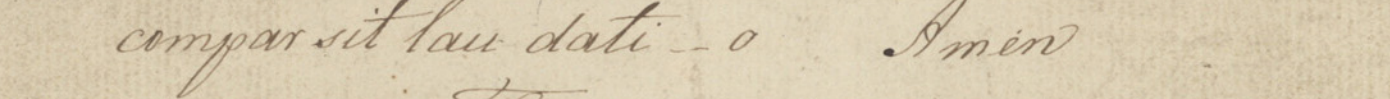
que laus et ju - bi - la - ti - o



salus honor virtus quoque sit et bene



di - cti - o pro - ce - denti ab u - troque



com - par - sit lau - dati - o A - men


Finis



Empty musical staves at the bottom of the page.



# Soprano Concerto

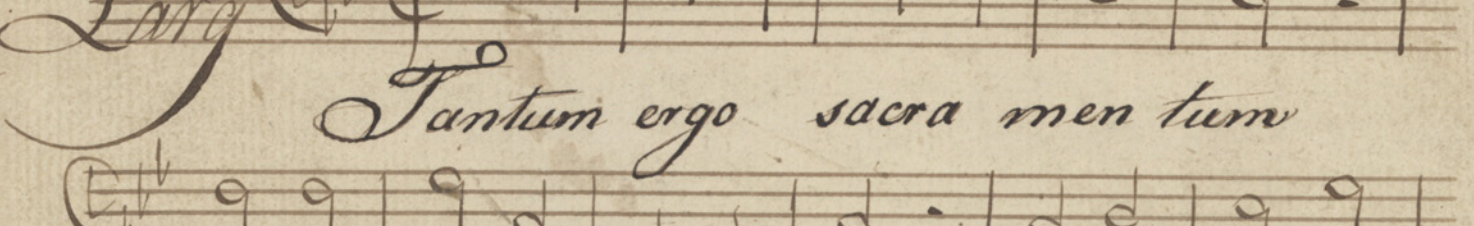
*Grave*  *O Salu ta ris hosti a*

*quae Celi pandis quae Celi pandis hosti-*

*um bella premunt bella premunt hos tili a da*

*robur da robur fer au - xili um*

*fer au - xili um Amen*

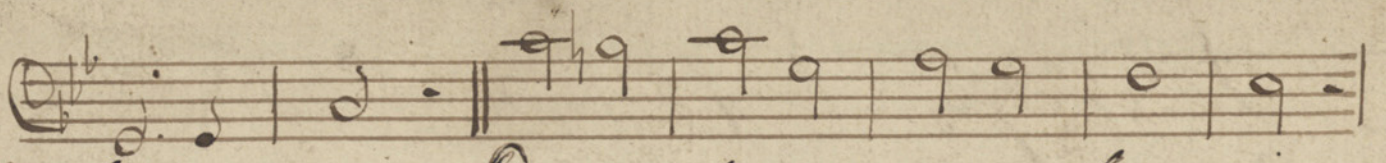
*Larg*  *Tantum ergo sacra men tum*

*vene remur Cernu i et an tiquum*

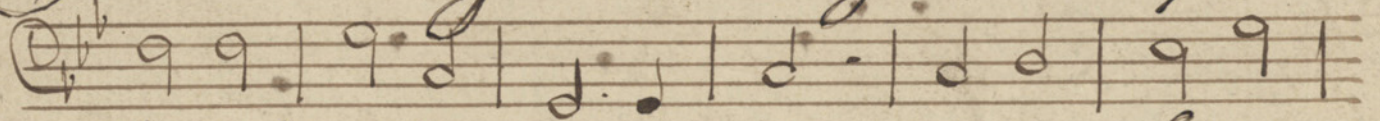
*documentum novo ce - dat ri tu i*

*prestet si des supplementum sensuum de*

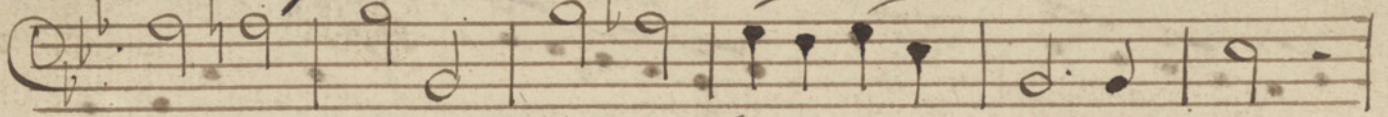




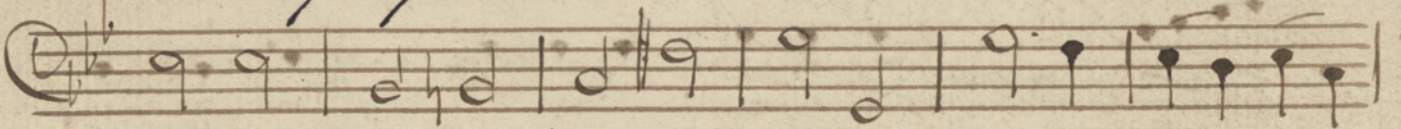
Se-ctu-i. Ge-ni-to-ri ge-ni-to-que



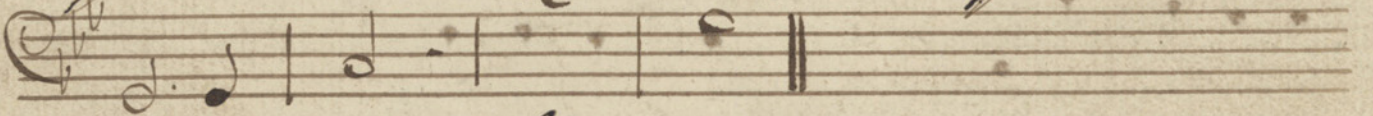
Laus et ju-bi-la-ti-o Sa-lus ho-nor



vir-tus quo-que sit et be-ne-di-cti-o



pro-ce-denti ab u-tro-que com-pa-rat laus



da-ti-o A-men.

Finis

