

Introduccão
Thema com Variacões

Para

Clarinetto, Flauta, Cornetta, Orfeobald.

~~~~~

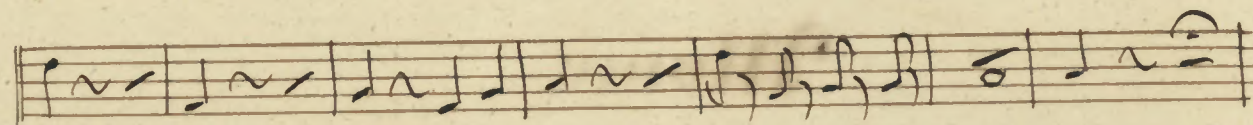
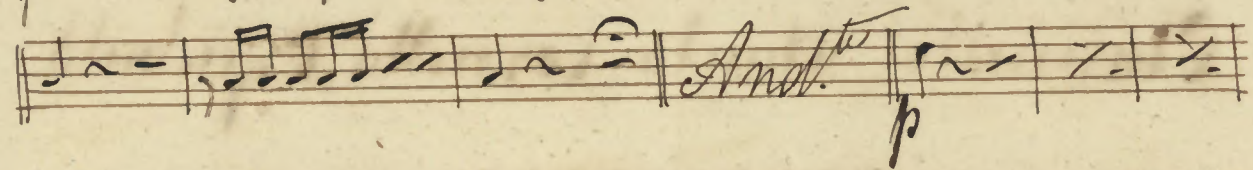
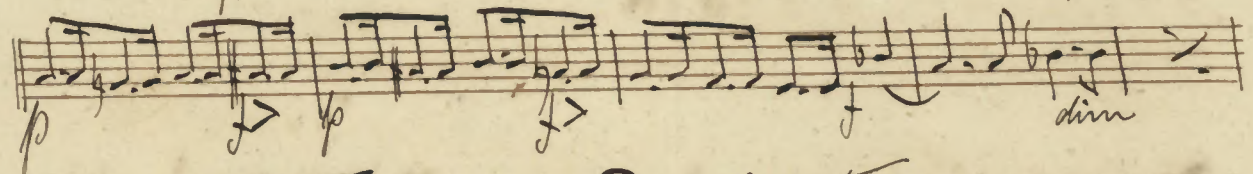
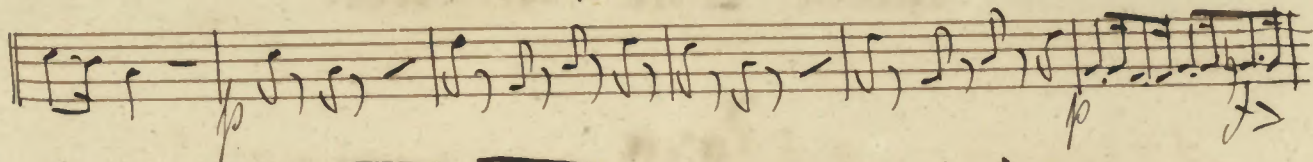
Musica

De

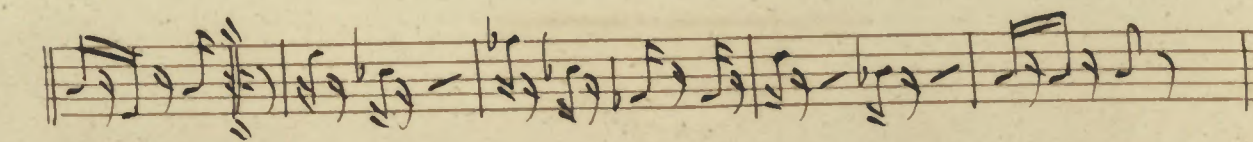
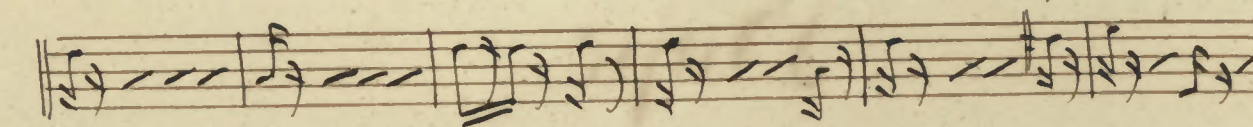
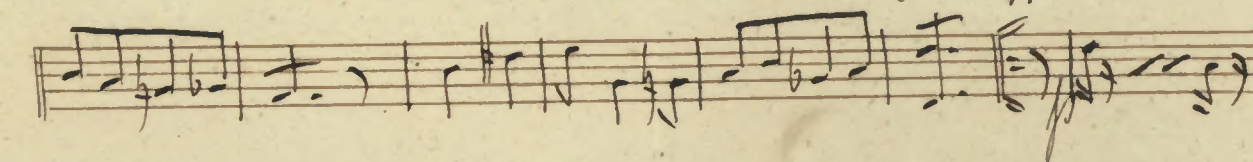
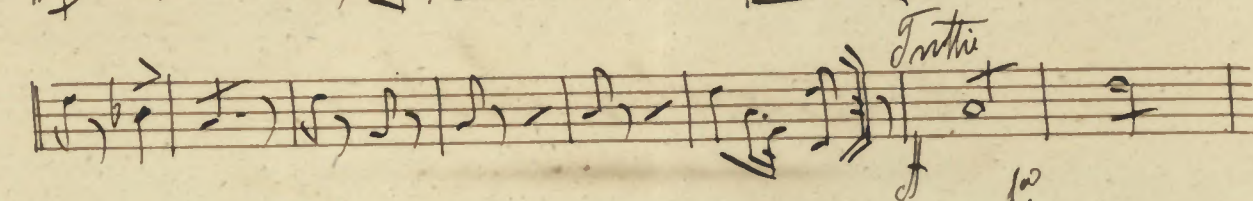
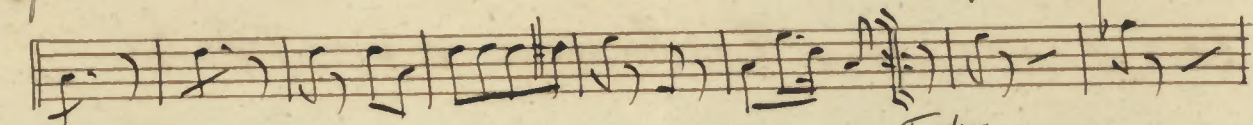
Francisco Antonio Norberto  
dos Santos Pinto:

Basso.

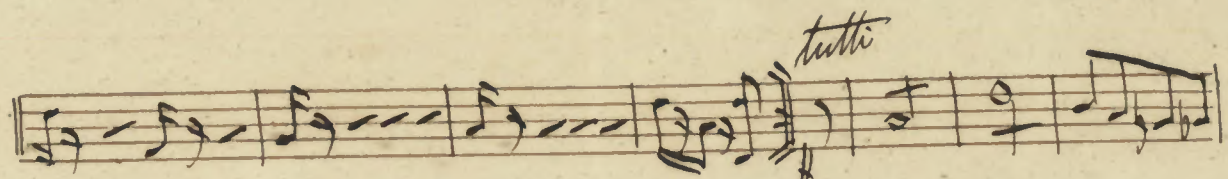
Marcial  $\text{D}^{\flat} \text{C} \frac{3}{4}$



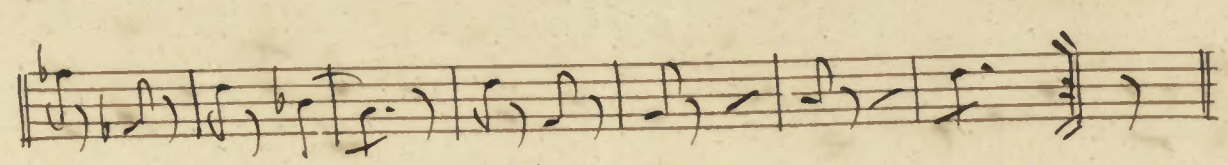
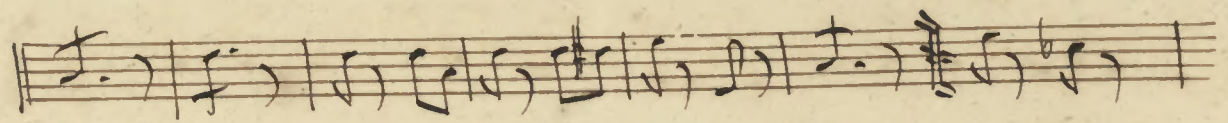
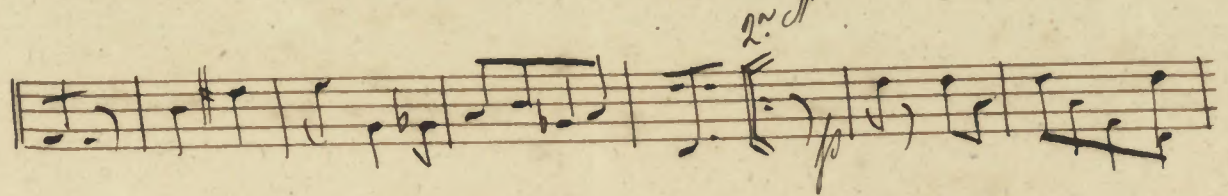
Thema *Anot.*



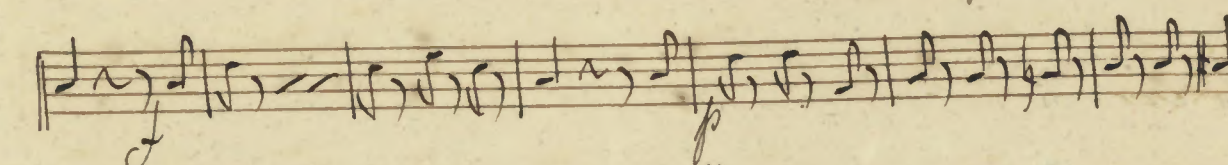
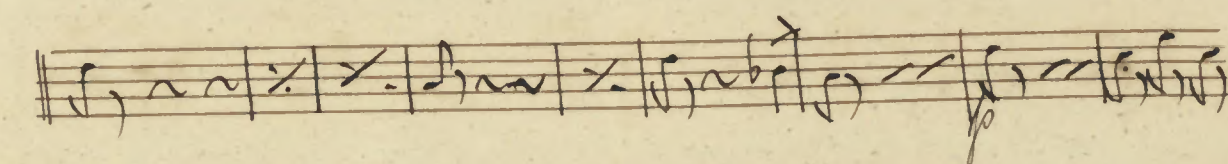
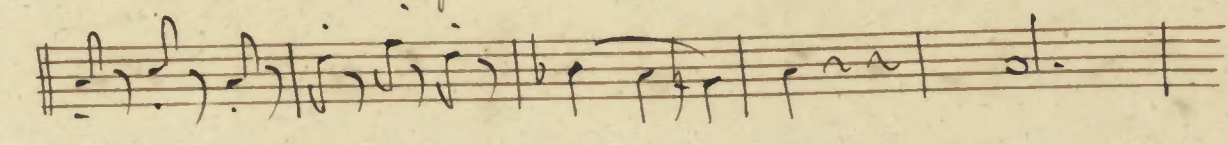
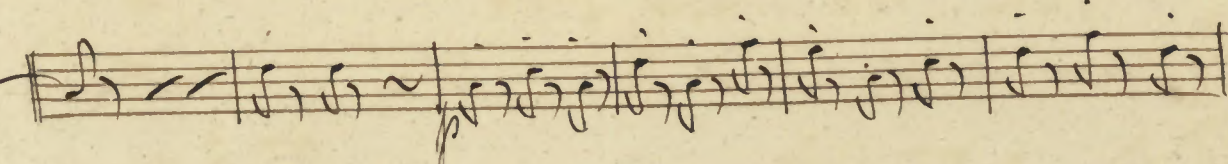
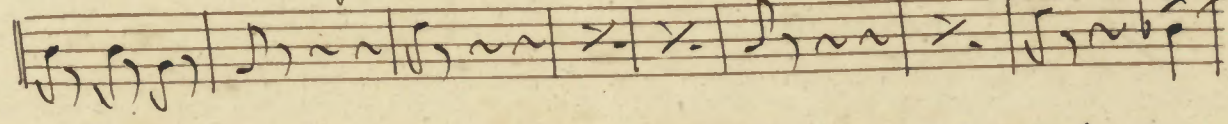
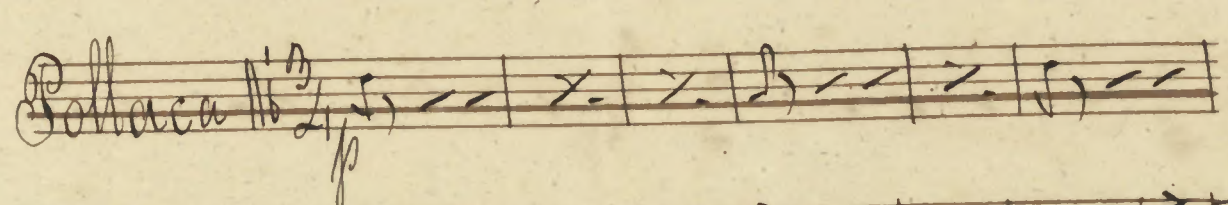
*tutti*



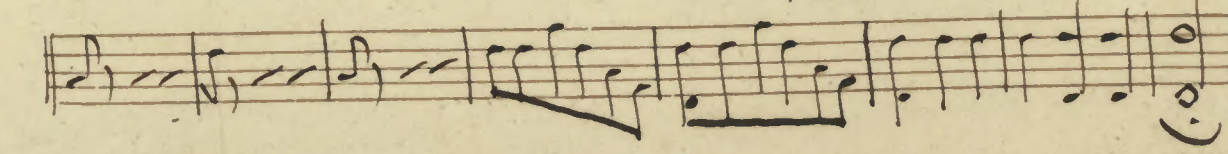
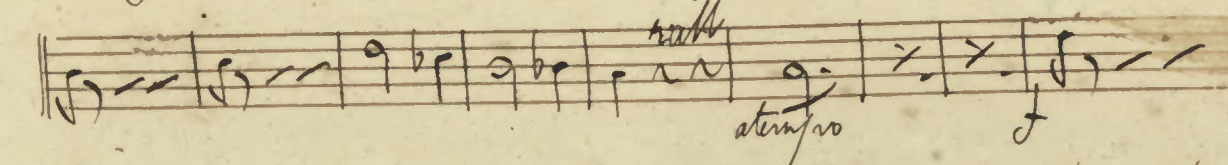
*2. cl*



*Bollaca*  $\frac{3}{4}$



*rit*  
*ad tempo*



Valse Op. 10 No. 3

Musical notation on a five-line staff.

Musical notation on a five-line staff.

Musical notation on a five-line staff.

Musical notation on a five-line staff.

Musical notation on a five-line staff.

Musical notation on a five-line staff.

Musical notation on a five-line staff.

Musical notation on a five-line staff.

Musical notation on a five-line staff.

Musical notation on a five-line staff.

Empty musical staff.

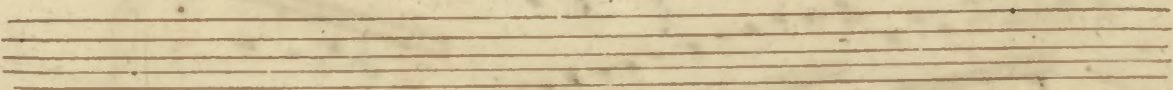
*Marcia*  $\text{G} \# \text{C}$

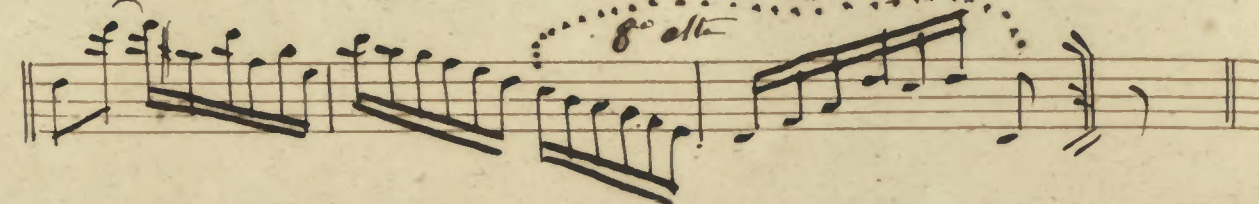
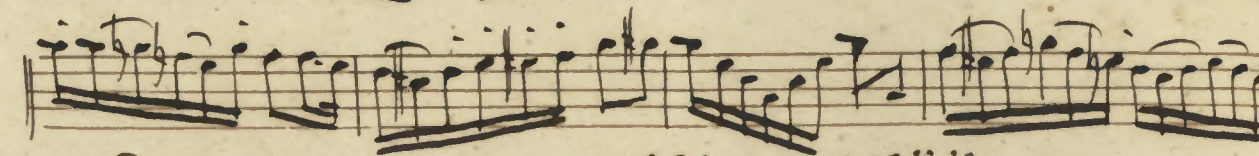
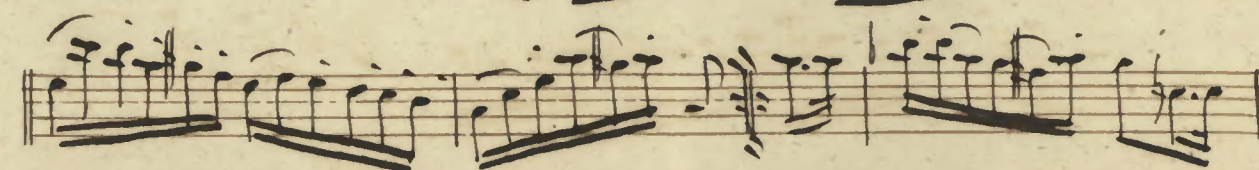
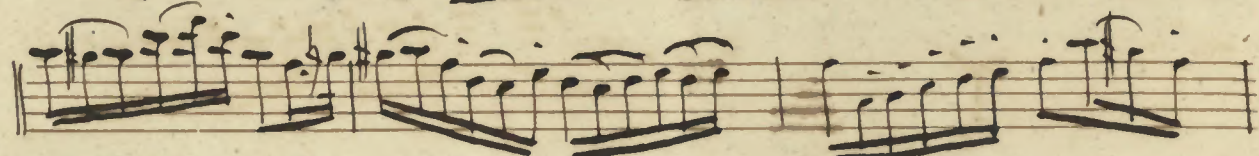
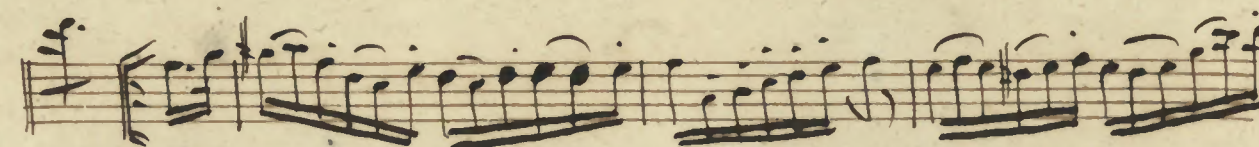
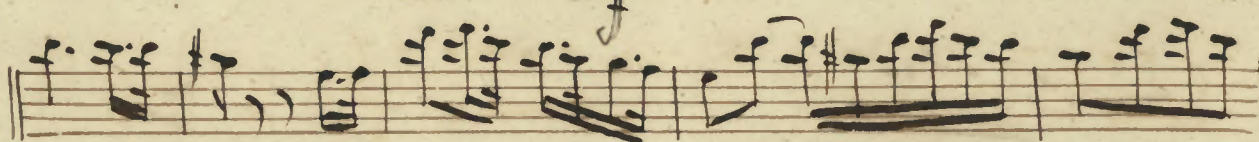
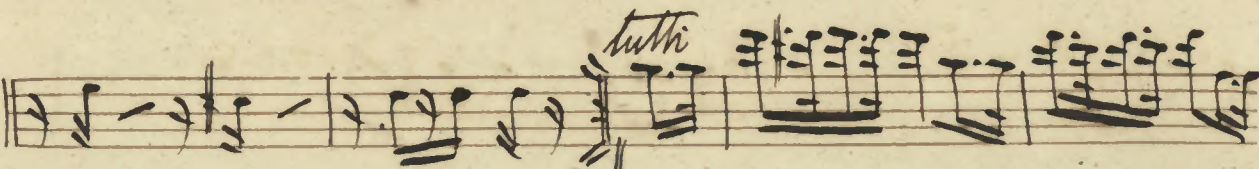
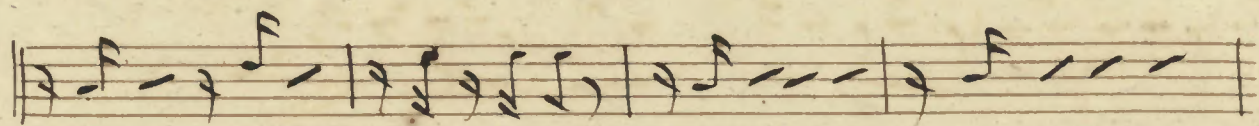
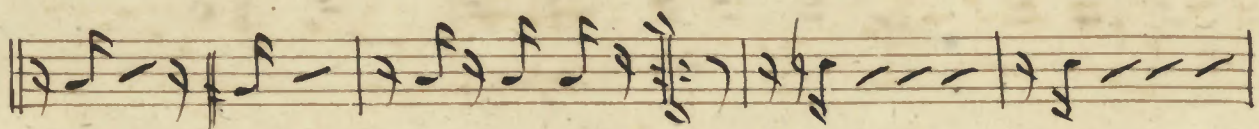
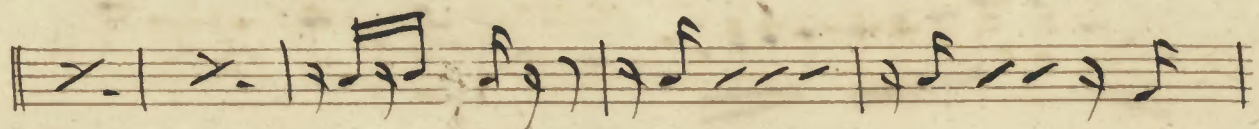
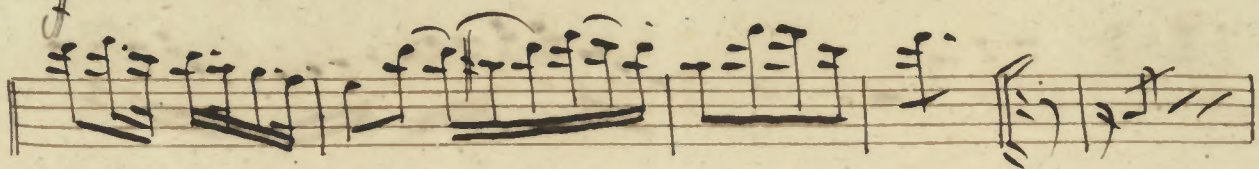
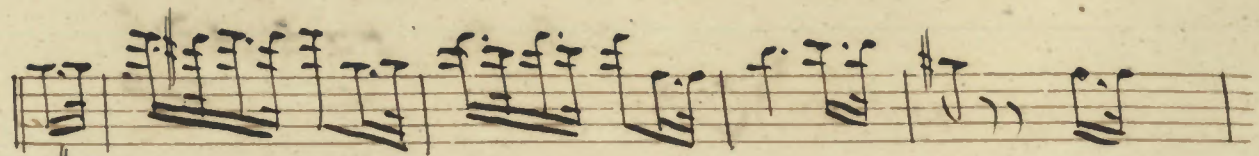
*Andante*  $\text{G} \# \text{C}$

*Segue o Tema*

*Andante*  $\text{G} \# \text{C}$

*Volte para o tutti*





*Polluca*

Waltz 3/4

Musical notation on a five-line staff, featuring a treble clef, a key signature of one sharp (F#), and a 3/4 time signature. The notation includes various note values, rests, and dynamic markings.

Musical notation on a five-line staff, continuing the piece with similar note values and rests.

Musical notation on a five-line staff, showing a continuation of the melodic line with some slurs.

Musical notation on a five-line staff, featuring a series of eighth notes and a slur.

Musical notation on a five-line staff, including a double bar line and a repeat sign.

Musical notation on a five-line staff, showing a continuation of the piece with various note values.

Musical notation on a five-line staff, featuring a series of eighth notes and a slur.

Musical notation on a five-line staff, including a double bar line and a repeat sign.

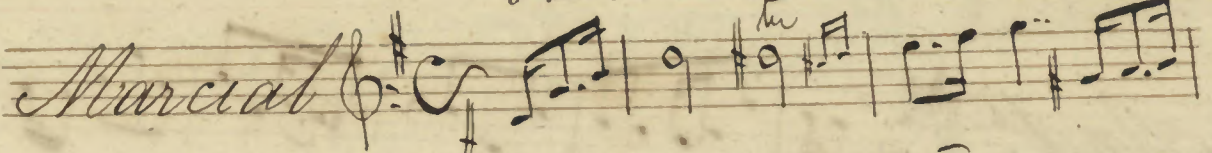
Musical notation on a five-line staff, showing a continuation of the piece with various note values.

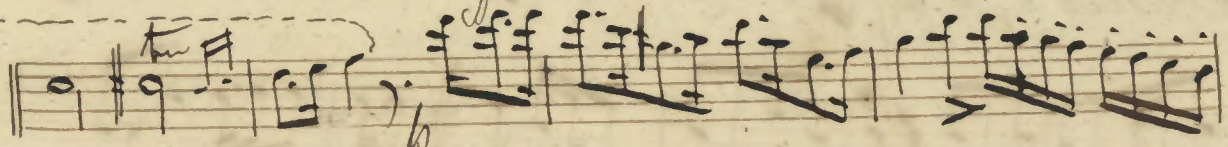
Musical notation on a five-line staff, featuring a series of eighth notes and a slur.

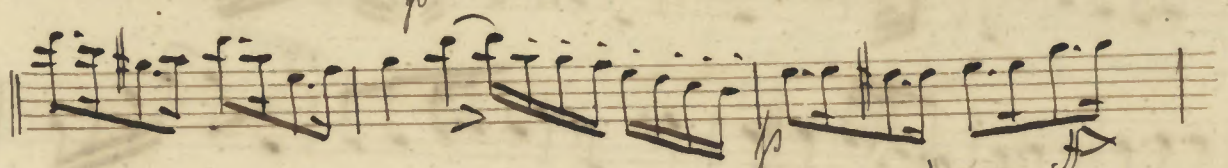
Musical notation on a five-line staff, concluding the piece with a double bar line and a repeat sign.

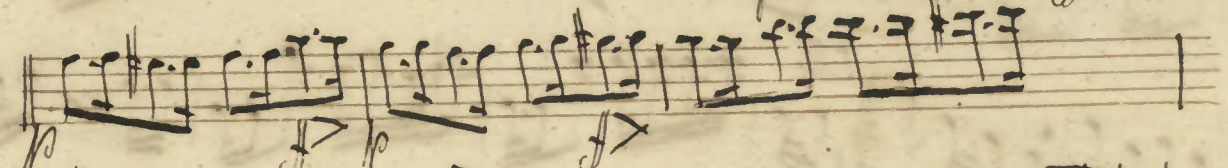


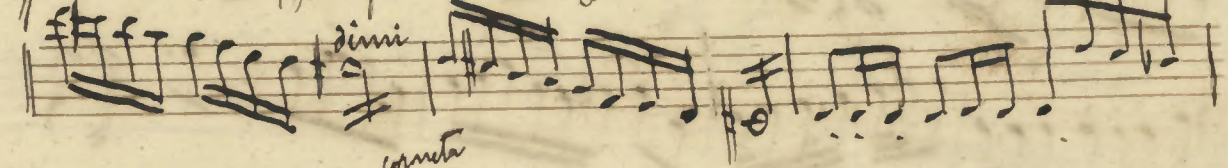
# Clarinetto

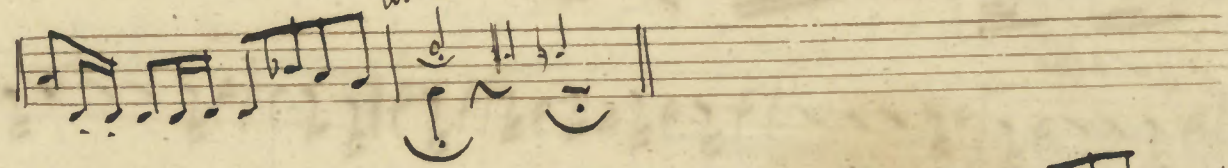
*Marcial* 

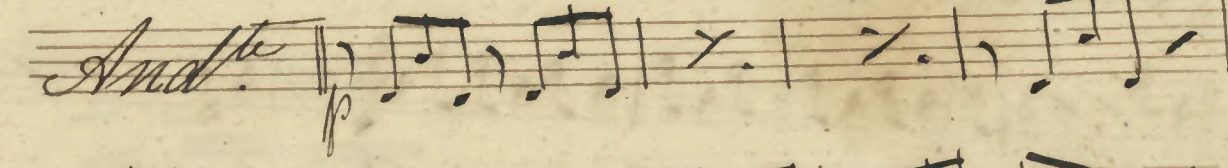
*tu* 

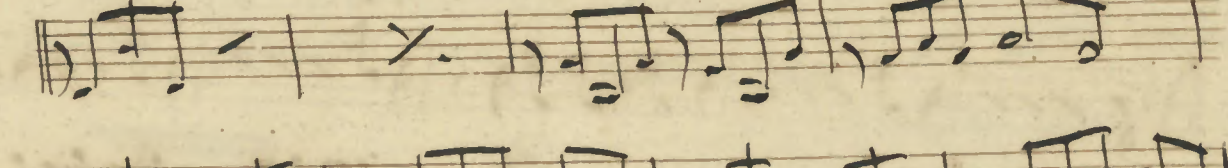


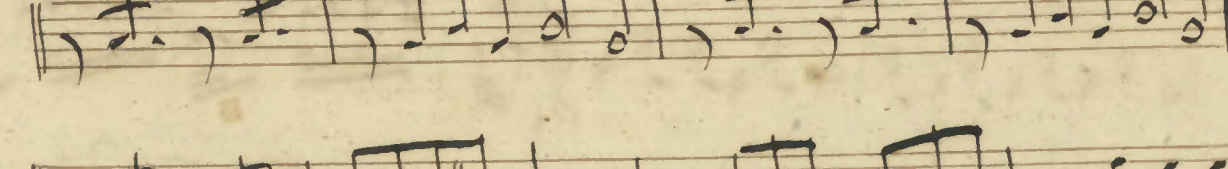


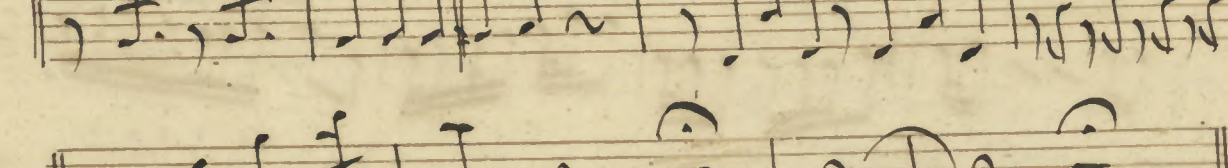
*dimi* 

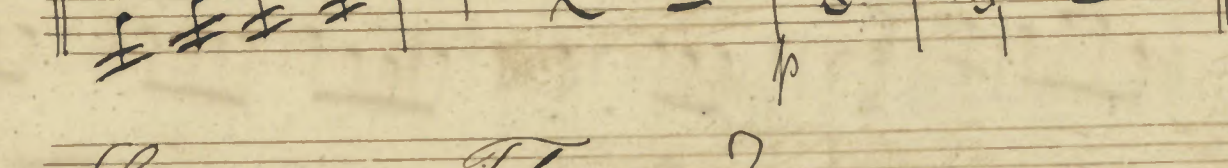
*coneta* 

*Andate* 









*Segue o Thema.*

*And.*

*p*

*tutti*

*12ª variação*

*p*

*tutti*

Polacca  $\frac{3}{4}$   $\text{p}$

Waltz  $\text{G} = \frac{3}{4}$

Handwritten musical notation on a five-line staff, featuring a treble clef, a key signature of one sharp (F#), and a 3/4 time signature. The notation includes various note values and rests.

Handwritten musical notation on a five-line staff, continuing the piece with various note values and rests.

Handwritten musical notation on a five-line staff, including a double bar line and a repeat sign.

Handwritten musical notation on a five-line staff, featuring a treble clef and a key signature of one flat (F).

Handwritten musical notation on a five-line staff, including a double bar line and a repeat sign.

Handwritten musical notation on a five-line staff, featuring a treble clef and a key signature of one flat (F).

Handwritten musical notation on a five-line staff, including a double bar line and a repeat sign.

Handwritten musical notation on a five-line staff, including a double bar line and a repeat sign.

Handwritten musical notation on a five-line staff, including a double bar line and a repeat sign.

Handwritten musical notation on a five-line staff, including a double bar line and a repeat sign.

Handwritten musical notation on a five-line staff, including a double bar line and a repeat sign.

Handwritten musical notation on a five-line staff, concluding with a double bar line and a repeat sign.

Introduccao

Thema com Variacoes

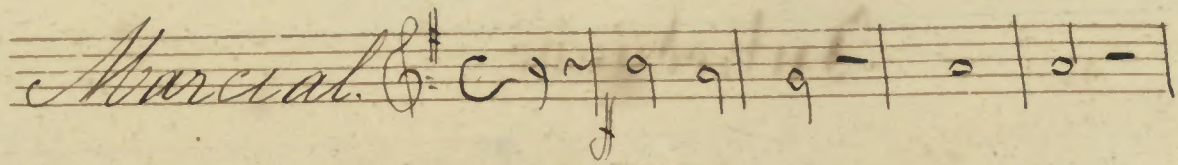
Sarva

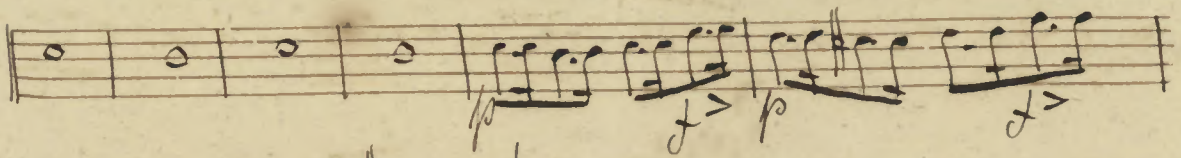
Clarinetto, Flauta, Cornetta et Orgueiro.

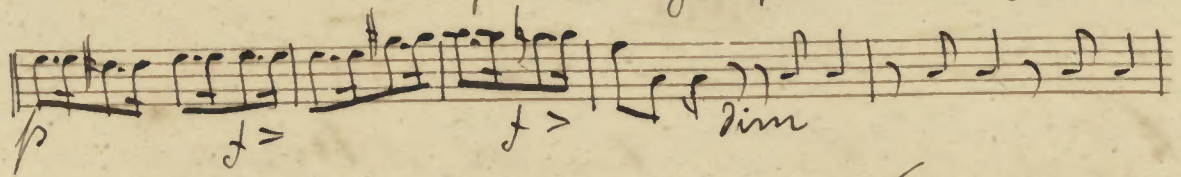
Muzica

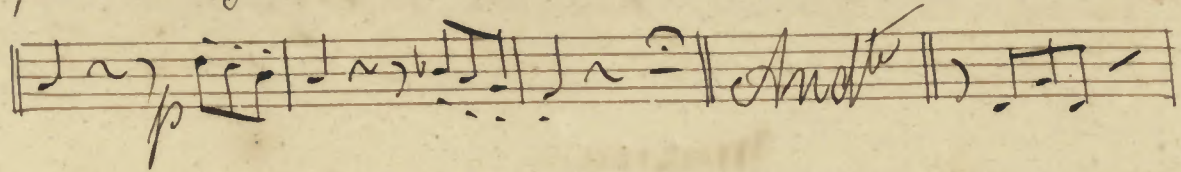
De Francisco Antonio Roberto dos Santos Pinto.

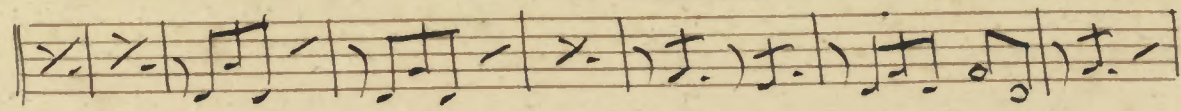
2<sup>o</sup> Clarinette.

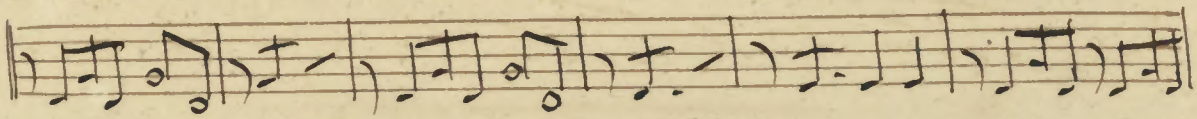
*Marchal.* 

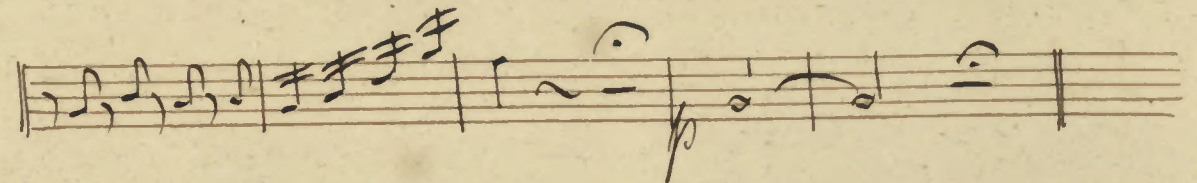


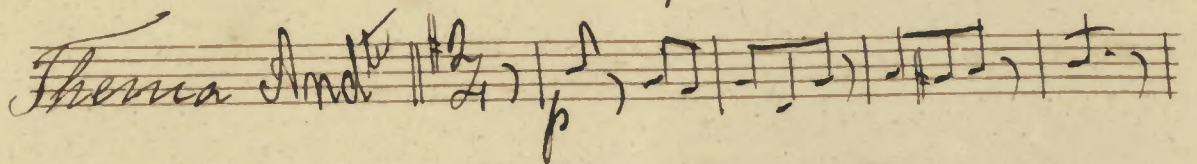


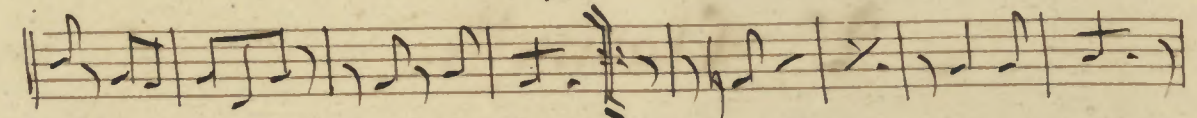


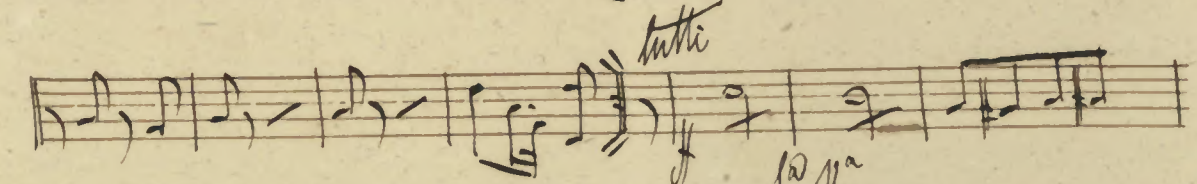


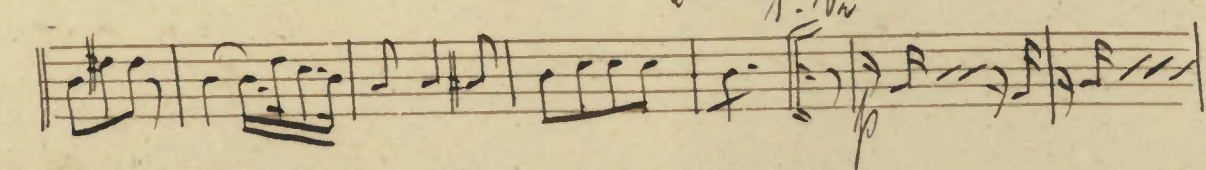


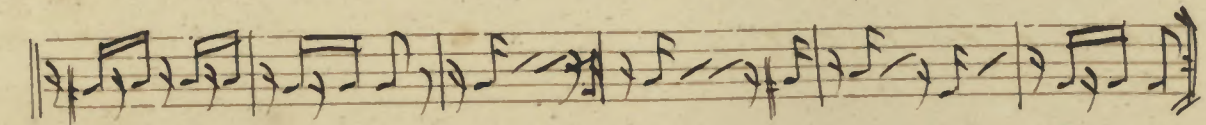


*Thema Andte* 









Handwritten musical notation on a single staff, featuring a treble clef, a key signature of one sharp (F#), and a 2/4 time signature. The notation includes various rhythmic values such as eighth and sixteenth notes, along with rests and dynamic markings like *1<sup>o</sup>* and *f*.

Handwritten musical notation on a single staff, featuring a treble clef, a key signature of one sharp (F#), and a 2/4 time signature. The notation includes various rhythmic values and dynamic markings such as *tutti* and *f*.

Handwritten musical notation on a single staff, featuring a treble clef, a key signature of one sharp (F#), and a 2/4 time signature. The notation includes various rhythmic values and dynamic markings such as *2<sup>a</sup>* and *p*.

Handwritten musical notation on a single staff, featuring a treble clef, a key signature of one sharp (F#), and a 2/4 time signature. The notation includes various rhythmic values and dynamic markings such as *p*.

Handwritten musical notation on a single staff, featuring a treble clef, a key signature of one sharp (F#), and a 2/4 time signature. The notation includes various rhythmic values and dynamic markings such as *Adagio* and *p*.

Handwritten musical notation on a single staff, featuring a treble clef, a key signature of one sharp (F#), and a 2/4 time signature. The notation includes various rhythmic values and dynamic markings such as *p*.

Handwritten musical notation on a single staff, featuring a treble clef, a key signature of one sharp (F#), and a 2/4 time signature. The notation includes various rhythmic values and dynamic markings such as *p*.

Handwritten musical notation on a single staff, featuring a treble clef, a key signature of one sharp (F#), and a 2/4 time signature. The notation includes various rhythmic values and dynamic markings such as *p*.

Handwritten musical notation on a single staff, featuring a treble clef, a key signature of one sharp (F#), and a 2/4 time signature. The notation includes various rhythmic values and dynamic markings such as *p*.

Handwritten musical notation on a single staff, featuring a treble clef, a key signature of one sharp (F#), and a 2/4 time signature. The notation includes various rhythmic values and dynamic markings such as *rall* and *allegro*.

Handwritten musical notation on a single staff, featuring a treble clef, a key signature of one sharp (F#), and a 2/4 time signature. The notation includes various rhythmic values and dynamic markings such as *p*.

Handwritten musical notation on a single staff, featuring a treble clef, a key signature of one sharp (F#), and a 2/4 time signature. The notation includes various rhythmic values and dynamic markings such as *p*.

*Waltz*  $\text{G}$   $\frac{3}{4}$

~ | ~ r r | / . | ~ r r | ~ r r

~ | ~ r r | ~ r r | ~ r r | ~ r r | ~ r r

~ | ~ r r | ~ r r | ~ r r | ~ r r | ~ r r

~ | ~ r r | ~ r r | ~ r r | ~ r r | ~ r r

~ | ~ r r | ~ r r | ~ r r | ~ r r | ~ r r

~ | ~ r r | ~ r r | ~ r r | ~ r r | ~ r r

~ | ~ r r | ~ r r | ~ r r | ~ r r | ~ r r

~ | ~ r r | ~ r r | ~ r r | ~ r r | ~ r r

~ | ~ r r | ~ r r | ~ r r | ~ r r | ~ r r

~ | ~ r r | ~ r r | ~ r r | ~ r r | ~ r r

~ | ~ r r | ~ r r | ~ r r | ~ r r | ~ r r



Introduccao  
Theme Com Variacoes

Sara

Clarinete, Flauto, Cornetas et Percussao

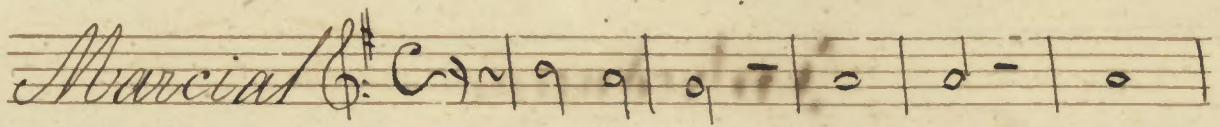
Musica

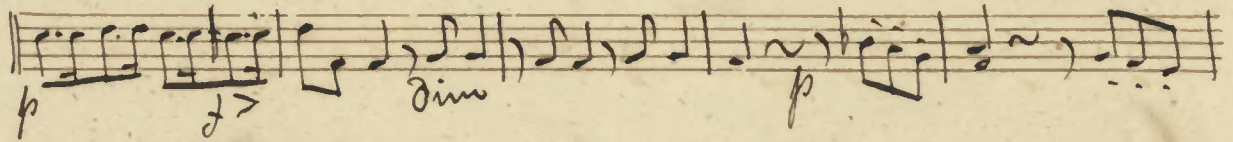
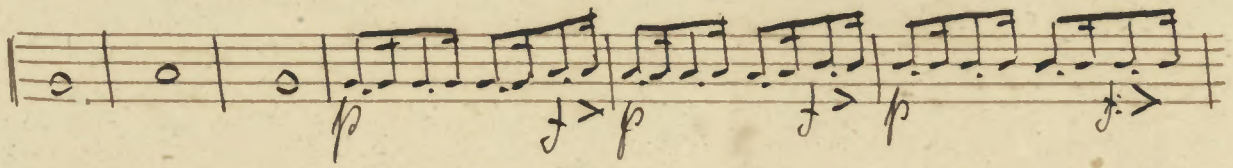
De Francisco Antonio Roberto de S. Paulo.

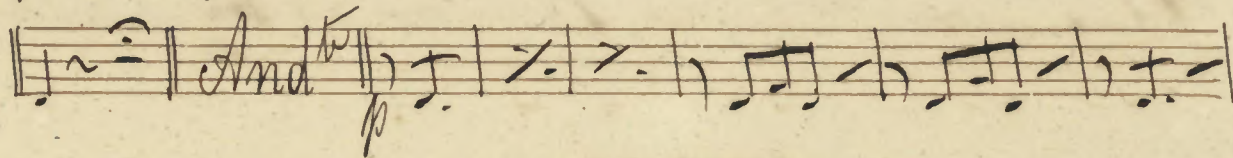
Blank musical staves

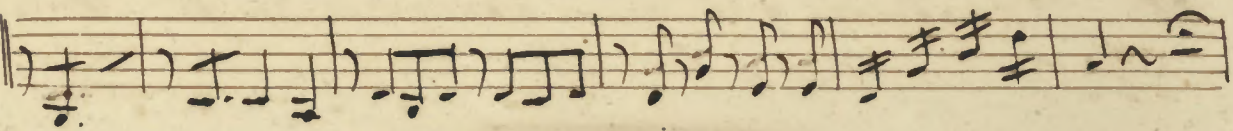
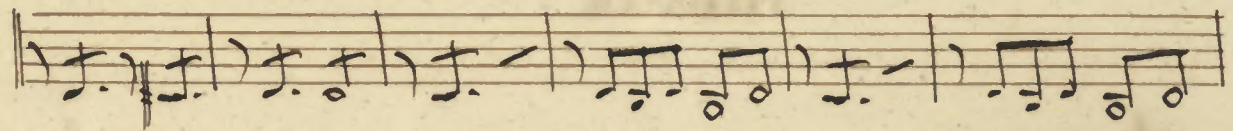
- 3º Clarinete

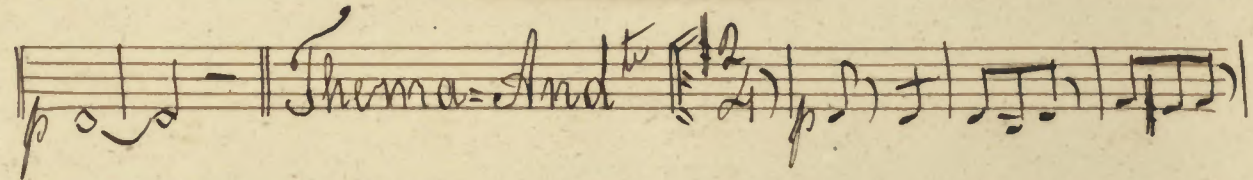
Blank musical staves

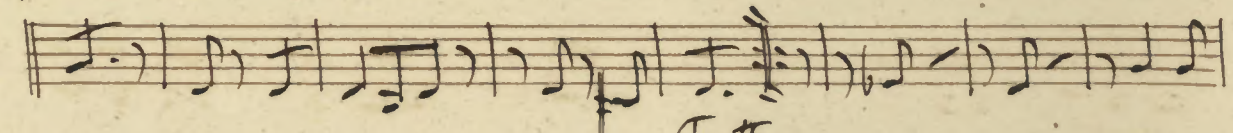
*Marchia* 

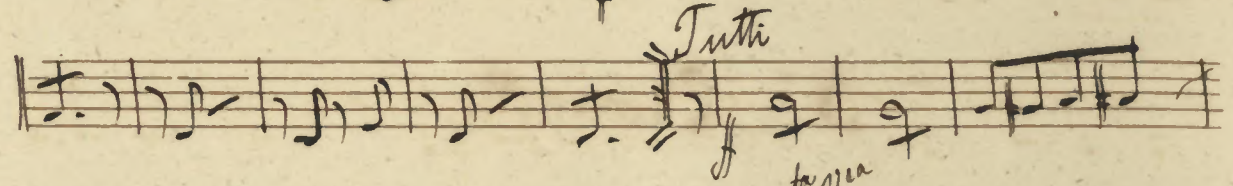


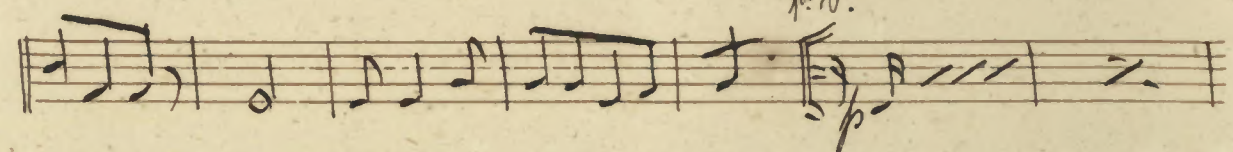
*And<sup>te</sup>* 

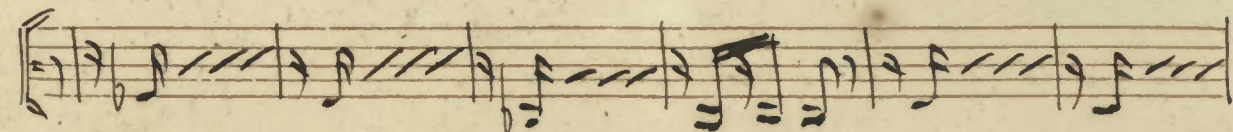
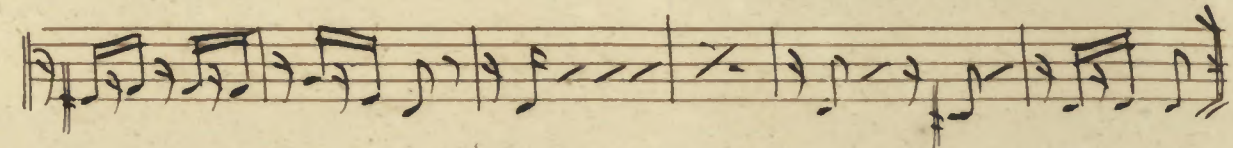


*Thema-And<sup>te</sup>* 



*Tutti* 

*for via* 



*Tutti*

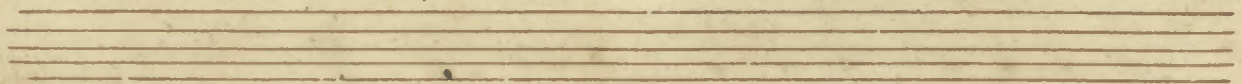
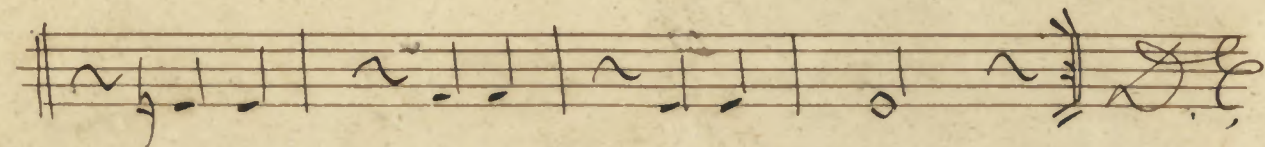
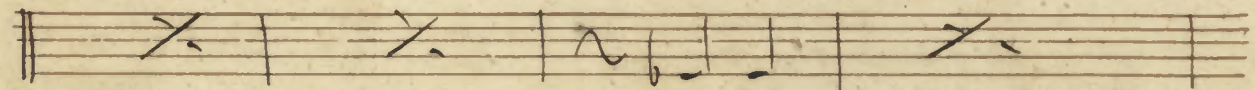
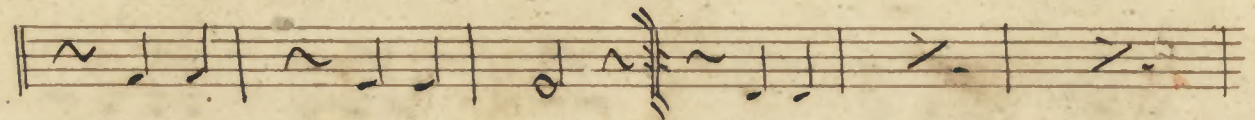
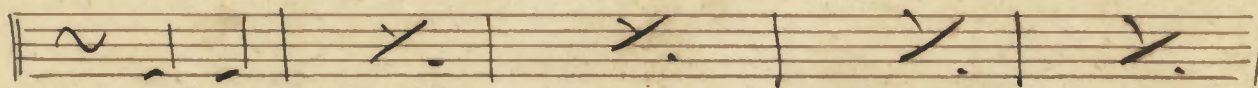
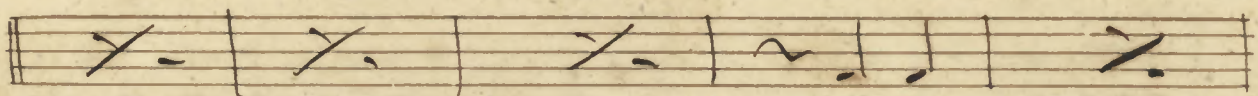
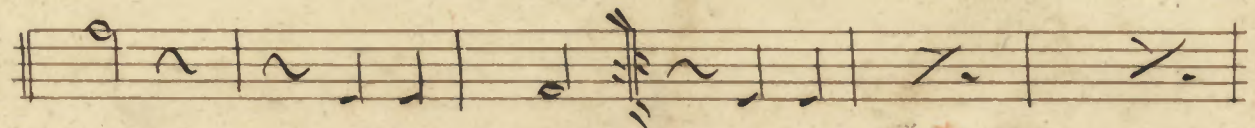

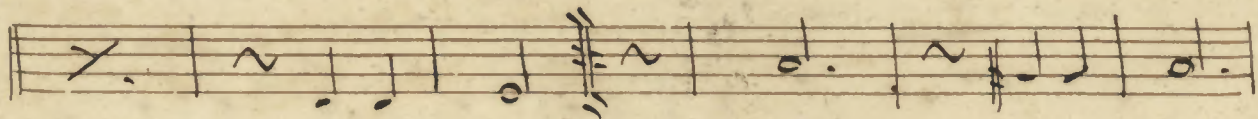
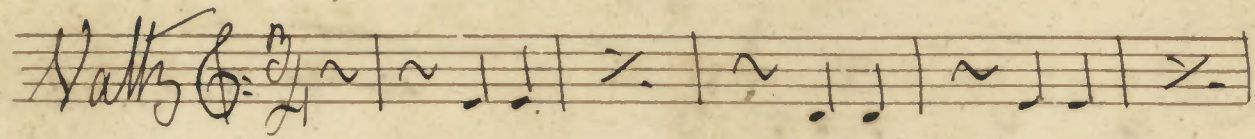
*2<sup>a</sup> Var.*

*Bolaca*

*rit*

*atempis*

Waltz  $\frac{3}{4}$



Introdução

Thema Com Variações

Para

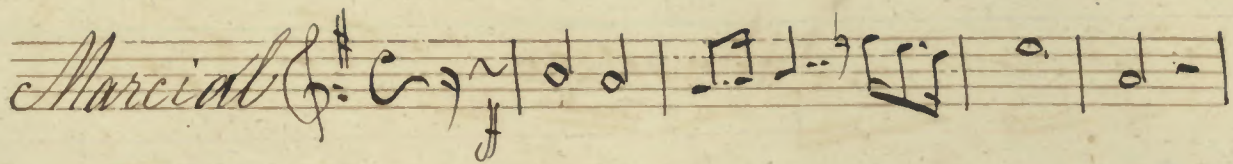
Clarinetto, Flauta, Cornetta et Orfeichoito

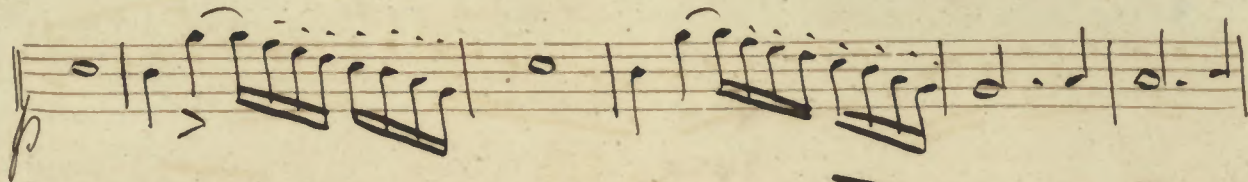
Musica

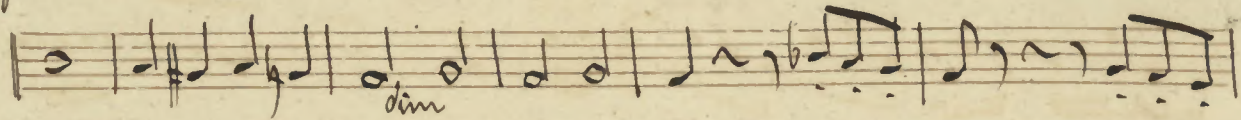
De Francisco Ant<sup>o</sup> e Roberto dos Santos Pinto

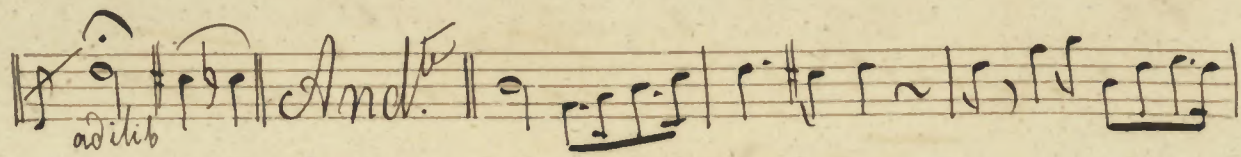
Arranjada p.<sup>o</sup> B. Ostermuller.

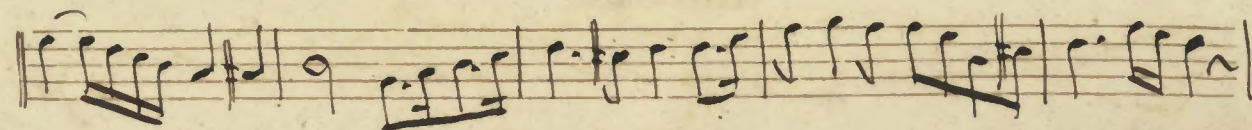
Cornetta em B<sup>ba</sup>

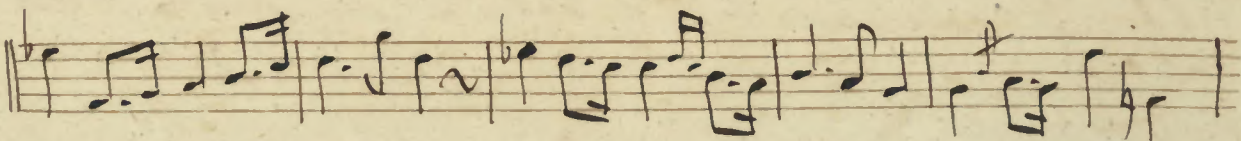
*Marcial* 

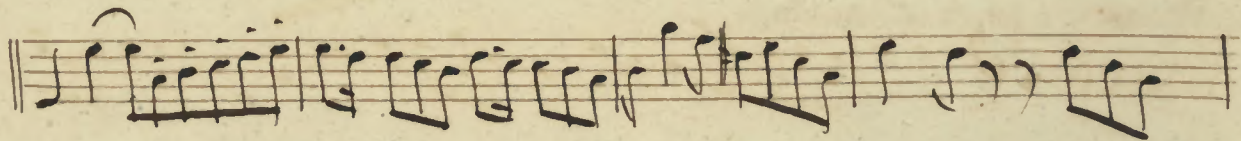


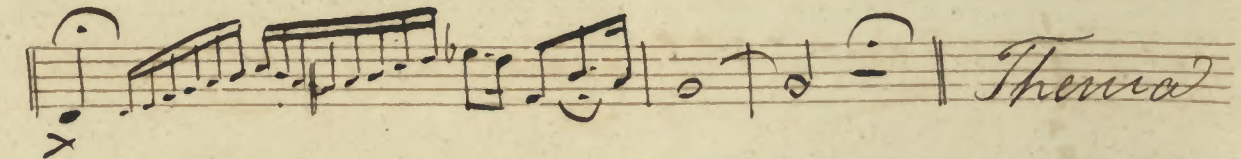


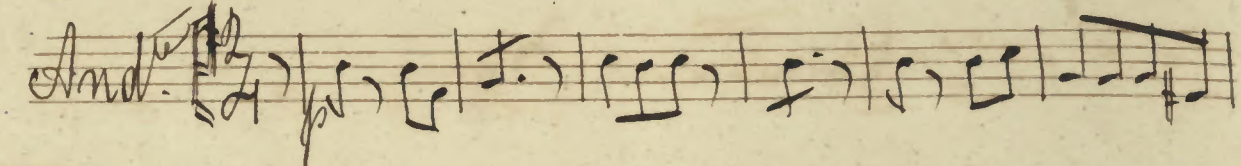
*ad lib*  *And.<sup>te</sup>*

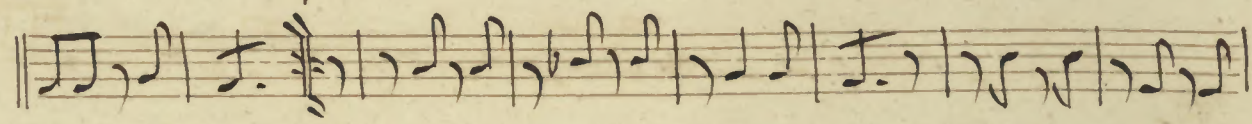


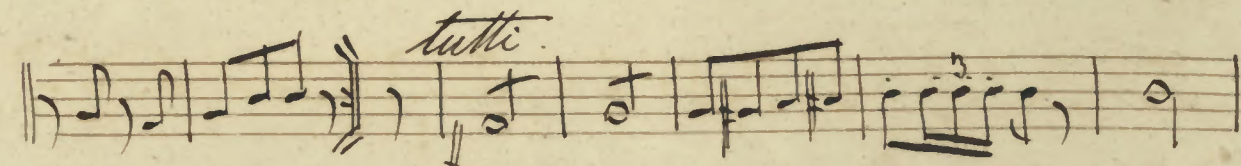


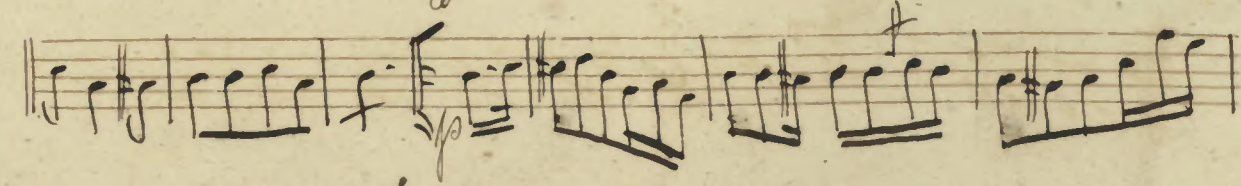


 *Thema*

*And.<sup>te</sup>* 



*tutti* 



A handwritten musical score consisting of 12 staves of music. The notation includes various rhythmic values, accidentals, and dynamic markings. The word "tutti" is written above the third staff, and "Polaca" is written at the beginning of the seventh staff. The score concludes with a signature in the bottom right corner.

*tutti*

Polaca

*rall*

*V. G.*

*al tempo*

*Waltz*



Introduccão

Thema com Variaçoes

Para

Clarinete, Flauta, Cornetta e Oboe.

Muzica

De Francisco Antonio e Norberto dos Santos  
Pinto

Arranjado p. T. G. Tenreiro.

Oboe.

*Marcial*  $\text{D}^{\flat} \text{C}$   $\text{C} \sim$   $\text{f}$   $\text{p}$

Handwritten musical notation for the first system of 'Marcial'. It consists of three staves. The first staff has a treble clef and a common time signature. The second and third staves have a bass clef. The music features various rhythmic patterns, including eighth and sixteenth notes, and rests. Dynamic markings include  $\text{p}$  and  $\text{f}$ .

*And<sup>te</sup>*  $\text{p}$

Handwritten musical notation for the second system of 'Marcial'. It consists of two staves. The first staff has a treble clef and the second has a bass clef. The music features various rhythmic patterns, including eighth and sixteenth notes, and rests. Dynamic markings include  $\text{p}$  and  $\text{f}$ .

Handwritten musical notation for the third system of 'Marcial'. It consists of two staves. The first staff has a treble clef and the second has a bass clef. The music features various rhythmic patterns, including eighth and sixteenth notes, and rests. Dynamic markings include  $\text{p}$  and  $\text{f}$ .

Handwritten musical notation for the fourth system of 'Marcial'. It consists of two staves. The first staff has a treble clef and the second has a bass clef. The music features various rhythmic patterns, including eighth and sixteenth notes, and rests. Dynamic markings include  $\text{p}$  and  $\text{f}$ .

Handwritten musical notation for the fifth system of 'Marcial'. It consists of two staves. The first staff has a treble clef and the second has a bass clef. The music features various rhythmic patterns, including eighth and sixteenth notes, and rests. Dynamic markings include  $\text{p}$  and  $\text{f}$ .

Handwritten musical notation for the sixth system of 'Marcial'. It consists of two staves. The first staff has a treble clef and the second has a bass clef. The music features various rhythmic patterns, including eighth and sixteenth notes, and rests. Dynamic markings include  $\text{p}$  and  $\text{f}$ .

*segue o Thema*

*And<sup>te</sup>*  $\text{f}$  *tutti*

Handwritten musical notation for the 'segue o Thema' section. It consists of four staves. The first staff has a treble clef and a 2/4 time signature. The second and third staves have a bass clef. The music features various rhythmic patterns, including eighth and sixteenth notes, and rests. Dynamic markings include  $\text{f}$  and  $\text{p}$ .

Handwritten musical notation on a single staff, featuring various rhythmic values and a key signature with one sharp.

Handwritten musical notation on a single staff, continuing the piece with complex rhythmic patterns.

Handwritten musical notation on a single staff, showing a change in rhythmic texture.

Handwritten musical notation on a single staff, starting with the word *tutti* written above the staff.

Handwritten musical notation on a single staff, featuring a dynamic marking of *pp* (pianissimo).

Handwritten musical notation on a single staff, continuing the melodic and harmonic development.

Handwritten musical notation on a single staff, showing a series of rhythmic patterns.

Section titled *Pollaca* in 3/2 time, marked *2/p* (allegretto), with a treble clef and a key signature of one sharp.

Handwritten musical notation on a single staff, beginning the *Pollaca* section.

Handwritten musical notation on a single staff, continuing the *Pollaca* section.

Handwritten musical notation on a single staff, concluding the *Pollaca* section with a double bar line.

Two empty musical staves at the bottom of the page.

Handwritten musical notation on a five-line staff, featuring various note values and rests.

Handwritten musical notation on a five-line staff, including a fermata over a note.

Handwritten musical notation on a five-line staff, starting with a treble clef and a key signature of one flat.

Handwritten musical notation on a five-line staff with the annotation *rall* above and *atempo* below.

Handwritten musical notation on a five-line staff, ending with a double bar line.

Handwritten musical notation on a five-line staff, beginning with the word *Waltz* written in a decorative script.

Handwritten musical notation on a five-line staff, featuring a treble clef and a key signature of one flat.

Handwritten musical notation on a five-line staff, including a treble clef and a key signature of one flat.

Handwritten musical notation on a five-line staff, featuring a treble clef and a key signature of one flat.

Handwritten musical notation on a five-line staff, featuring a treble clef and a key signature of one flat.

Handwritten musical notation on a five-line staff, featuring a treble clef and a key signature of one flat.

Handwritten musical notation on a five-line staff, concluding with a double bar line and the initials *DC*.