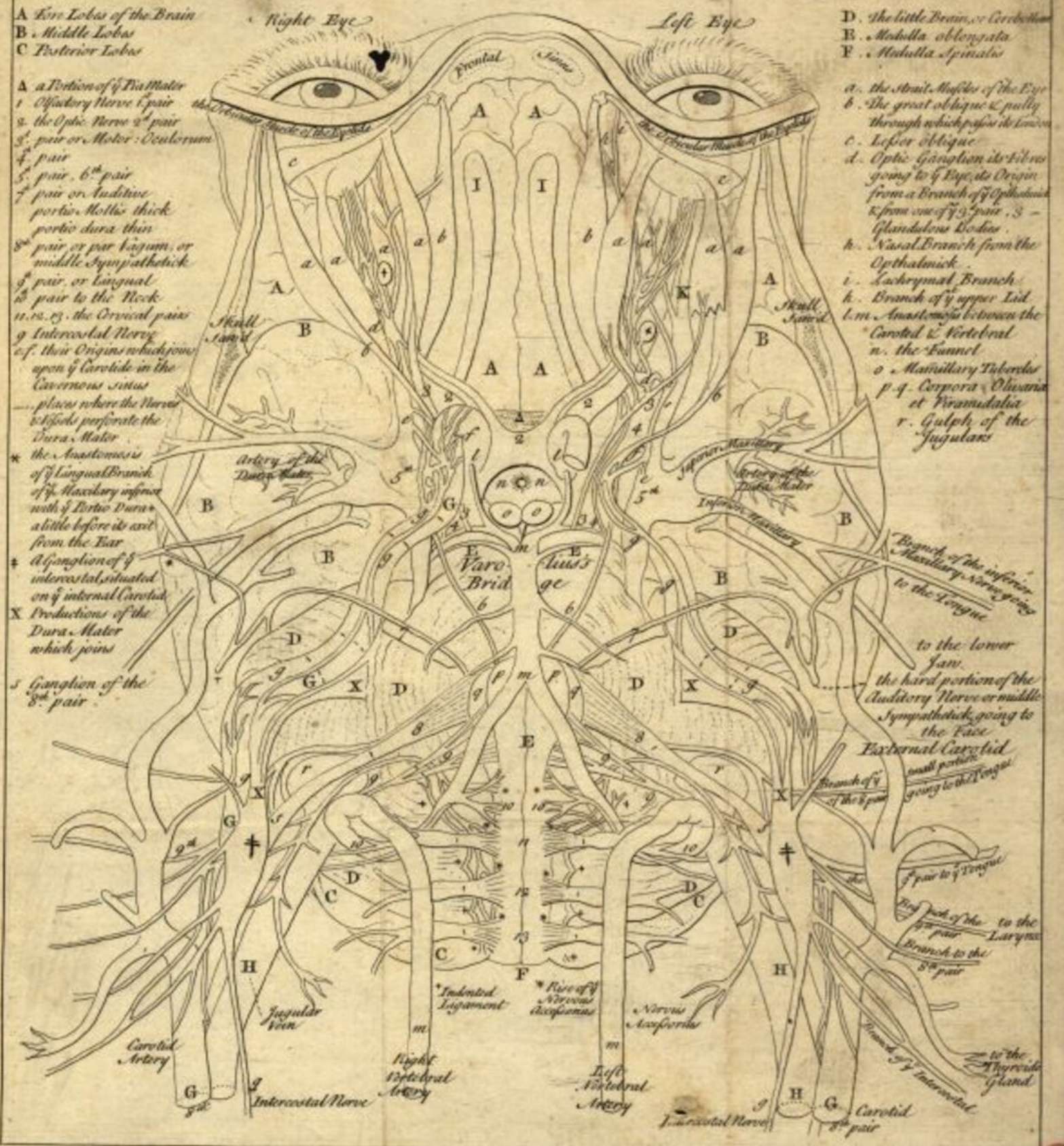
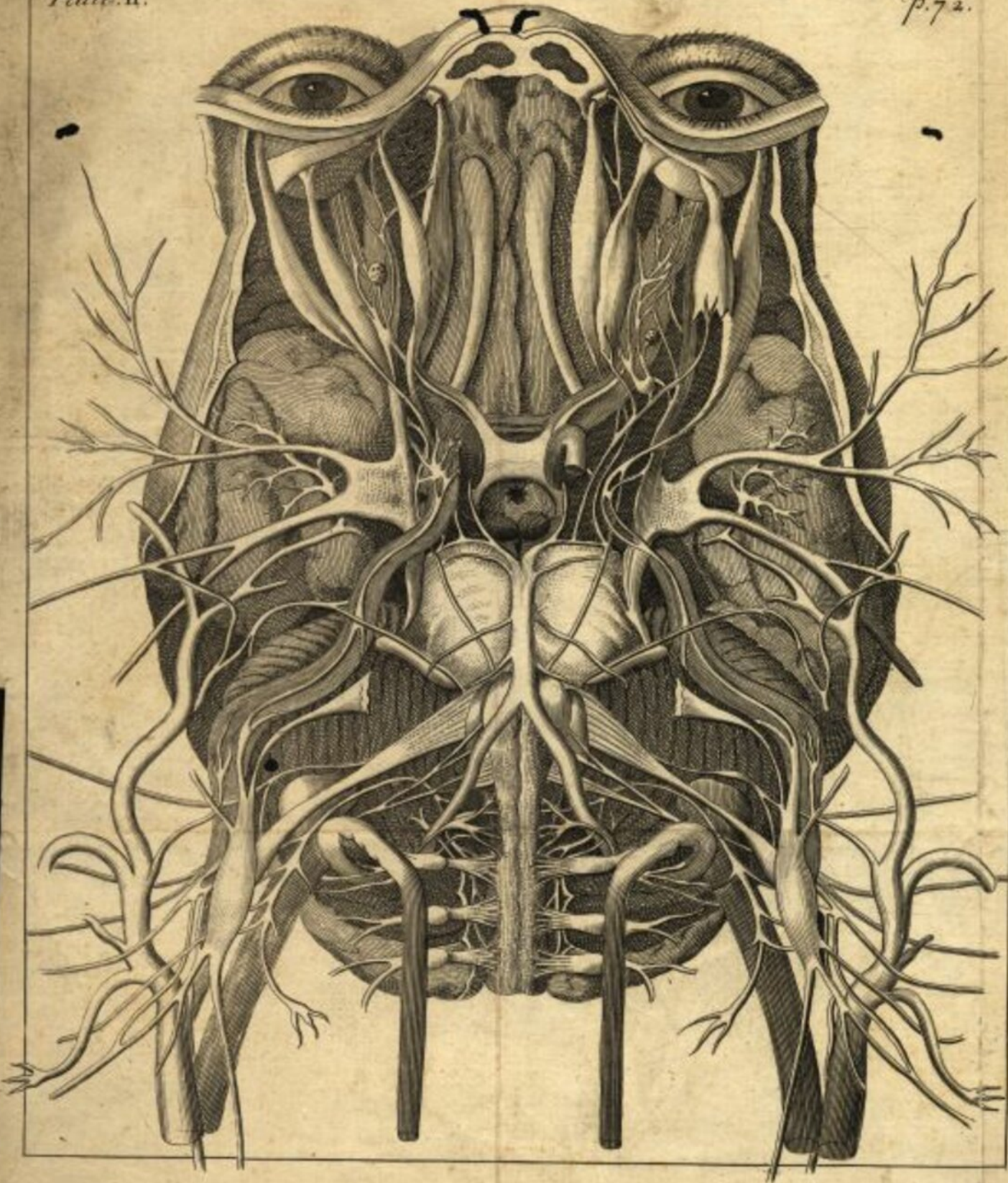


Plate. II.

p. 72.



A. Fore Lobes of the Brain  
 B. Middle Lobes  
 C. Posterior Lobes

A a Portion of the Brain Matter  
 1. Olfactory Nerve 1 pair  
 2. the Optic Nerve 2 pair  
 3. pair of Motor: Oculorum  
 4. pair  
 5. pair, 6. pair  
 7. pair or Auditive portio Mollis thick portio dura thin  
 8. pair or par Vagum, or middle Sympathetic  
 9. pair, or lingual  
 10. pair to the Neck  
 11, 12, 13. the Cervical pair  
 9 Intercostal Nerve of their Origins which join upon of Carotids in the Cavernous sinus  
 — places where the Nerves which perforate the Dura Mater  
 \* the Anastomosis of the Lingual Branch of the Maxillary inferior with of Dura Mater a little before its exit from the Ear  
 † a Ganglion of the intercostal, situated on of internal Carotid  
 X Productions of the Dura Mater which join  
 ‡ Ganglion of the 8. pair

D. the little Brain, or Cerebellum  
 E. Mollula oblongata  
 F. Mollula spinalis

a. the Strait Angles of the Eye  
 b. The great oblique & pulley through which passes its lower  
 c. Lesser oblique  
 d. Optic Ganglion its Fibres going to Eye, its Origin from a Branch of Ophthalmic 5. pair, 3. Glandulous Bodies  
 h. Nasal Branch from the Ophthalmic  
 i. Lachrymal Branch  
 k. Branch of 5. upper Lid  
 l, m. Anastomosis between the Carotid & Vertebral n. the Funnel  
 o. Maxillary Tubercles  
 p, q. Corpora Ovaria et Testicula  
 r. Gulph of the Jugulars

Right Eye  
 Left Eye  
 Frontal Sinus  
 Skull  
 Artery of the Dura Mater  
 Varo Brid  
 Louis's ge  
 Jugular Vein  
 Indented Ligament  
 Rise of Nervous Aqueous  
 Nerve Arterialis  
 Right Vertebral Artery  
 Intercostal Nerve  
 Carotid Artery  
 Left Vertebral Artery  
 Intercostal Nerve  
 Carotid Artery  
 8. pair  
 Branch of the inferior Maxillary Nerve going to the Tongue  
 to the lower Jaw  
 the hard portion of the Auditory Nerve or middle Sympathetic going to the Face  
 External Carotid small portion going to the Tongue  
 pair to the Tongue  
 tip of the pair branch to the Larynx  
 branch of the 8. pair  
 to the Thyroid Gland  
 branch of Intercostal