



LC 266

no

tu

as dominus

sta mi chi:

ttas tu as e

LC 266

amen.

repleat *in*noyris  
fuit p totu .inus ai  
di. *Di*apri post *in*

*noyris.*

Et *in*f  
tis du  
plicib.

*in*noyris

*in*

qui te *in*noyris





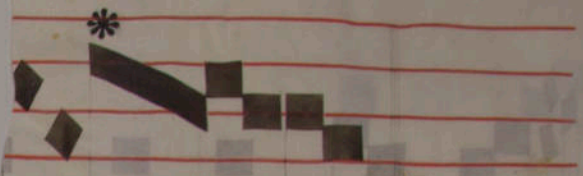


nde no bis do

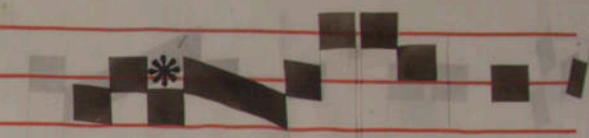
mi ne miſeri







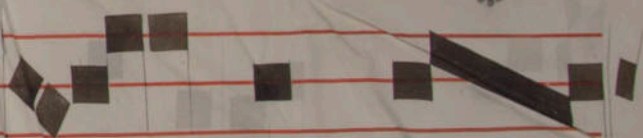
...us. Off.



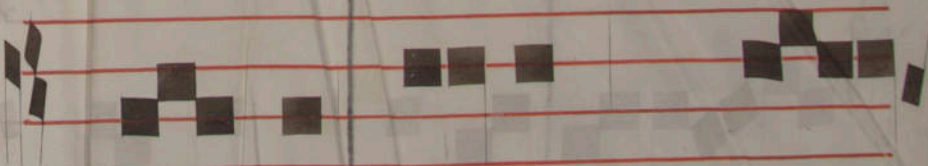
...te



...le ua



...u da ... nimam



...ne ... us me



us in te conf



non eru



neq; irrid



nt me inimi a ne



I: ete nku

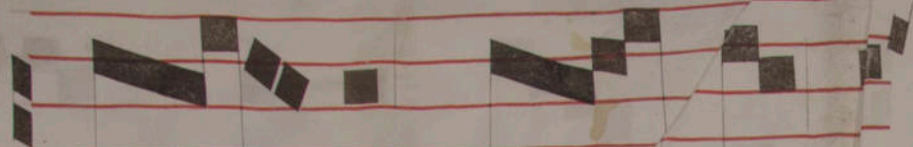
ccc do minus ue

II et a d salua

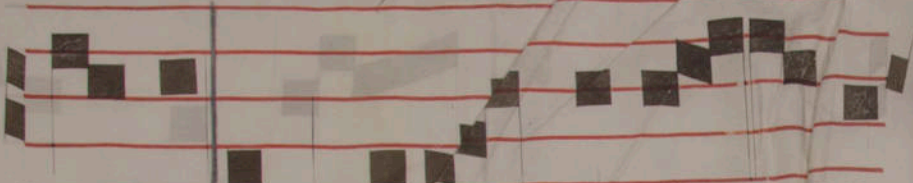
idas ge nt

idi tr fa

in p: numis glo:



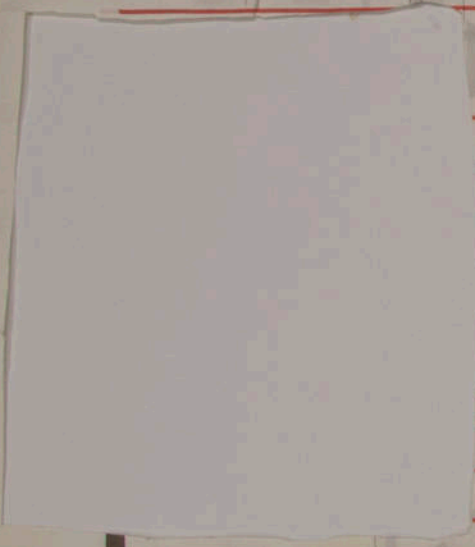
in tuo castro



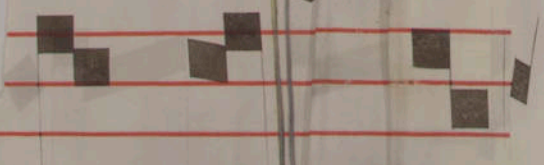
et in terra con-



sueti.



et regis



et intende: qu

Fragmented musical notation on red staves with black square neumes.

α

ϛ

κ

μ

ϛ

α

ϛ

ϛ

Fragmented musical notation on red staves with black square neumes.

||





qui or

e

ru

te

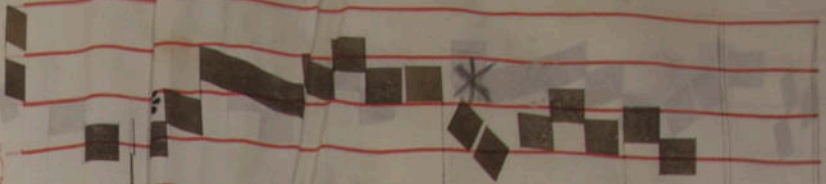
sta me ntum e

lu

su

per sa cri fi





ammonu ed



Gloria in excelsis deo



tu

stis in his quedi

cta sunt

hi. in do

in

in unum deum deum

is tu conuer

te us ui uifi ca

bi s no

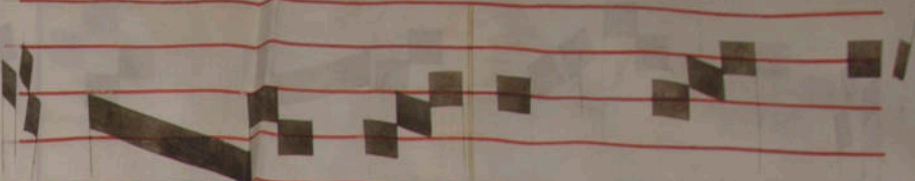
s, et ple bs tu

ante ostende

no bis

mi ne mi ser

co rdi x tu a



de te in do mi



no se mper iterum



dico ga ude te mo



de sti aue stano



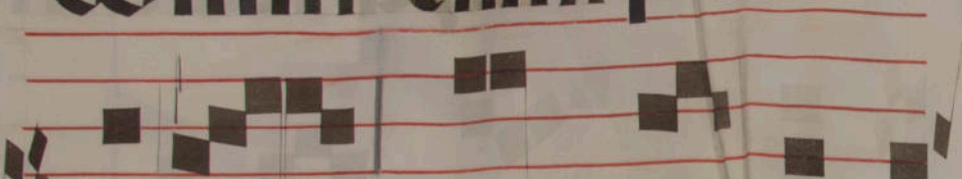
ta sit omnibus



homi ni bus:



domin' enim po



pe e stni chi tolli



ati si tis: f



mo mini orati o

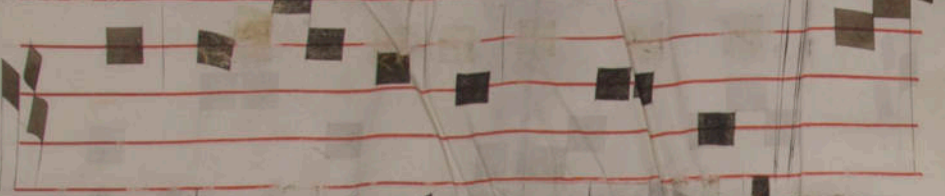
que petra o nes

ue firmote scit

ti domine terram tu



am: a vertsti cap



tiui tatem iacob.



ut dicitur a me n. 





in excelsa potenti



Actua in c...

The image shows a fragment of a medieval manuscript page. It features two staves of musical notation on red four-line staves. The notation consists of black square neumes, some of which are connected by horizontal lines. There are also some diamond-shaped symbols interspersed among the squares. Below the staves, the Latin text "gis nra de l inten" is written in a Gothic script. The paper is aged and shows signs of wear, including a vertical crease down the center and some discoloration.

gis nra de l inten

α: 0

ul

ctm

to

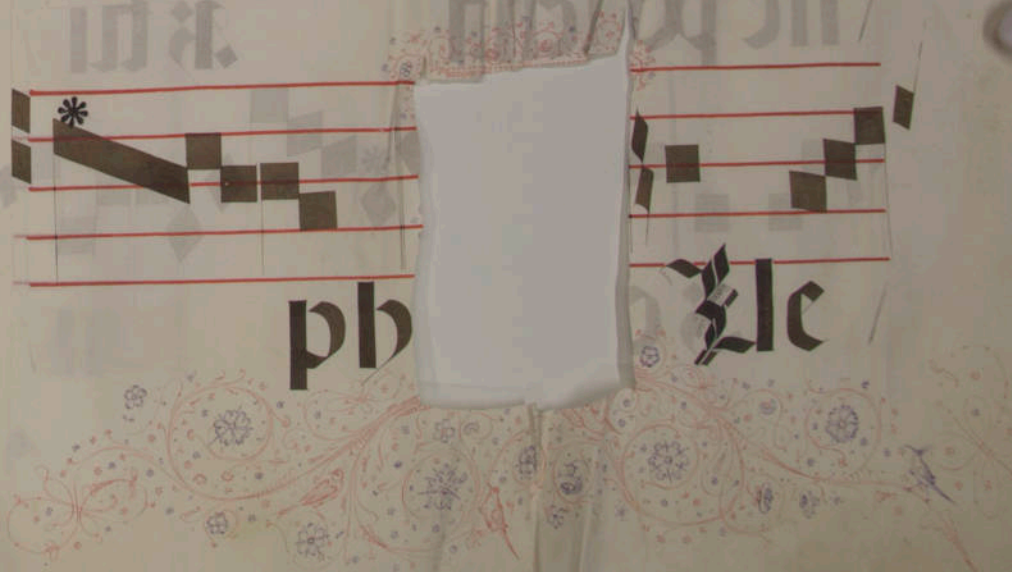
uenio

seo

\*

ph

le



lu

ita

o

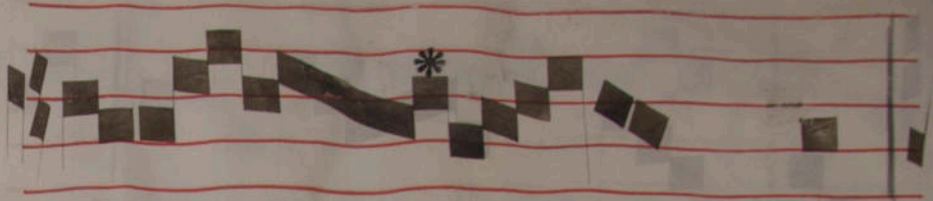
o mni

ne po tenti

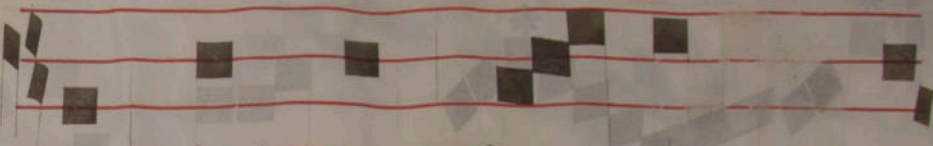
tu

tu

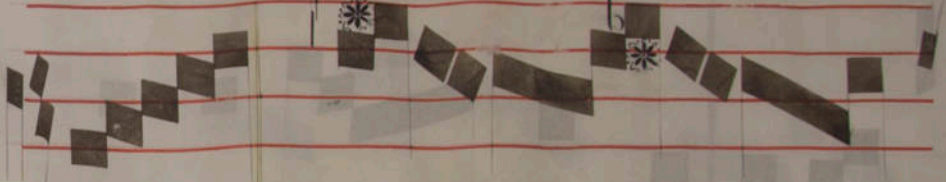
tu



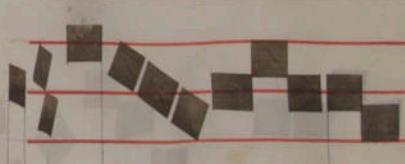
ut saluos fa a a



ut saluos fa a a

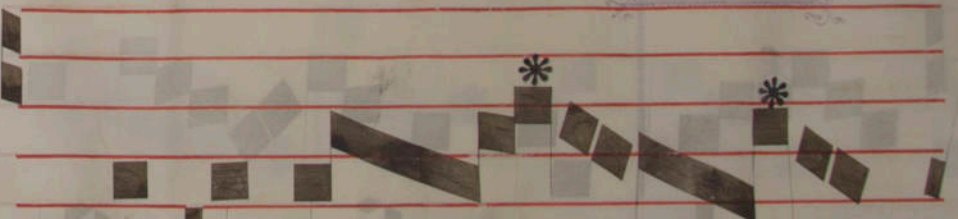


s no

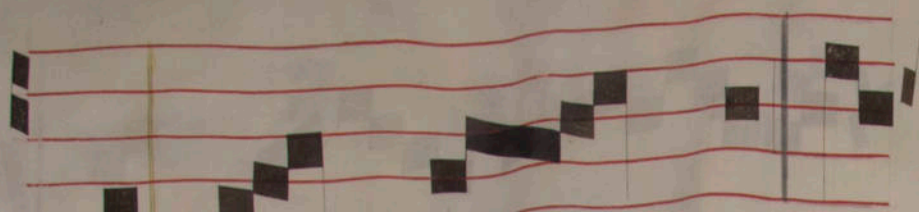


s. Off.

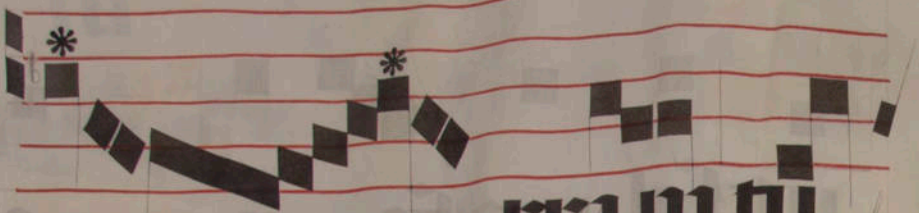
C



nedici



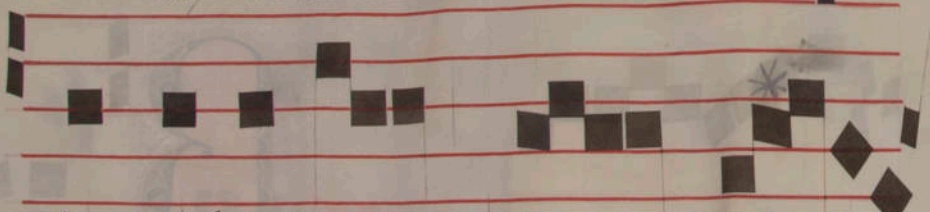
sti do mi ne te



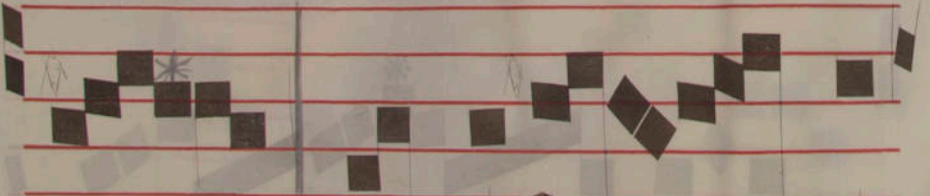
rra m tu



auera sti cap



truitate in ia co



b. re nisi sti

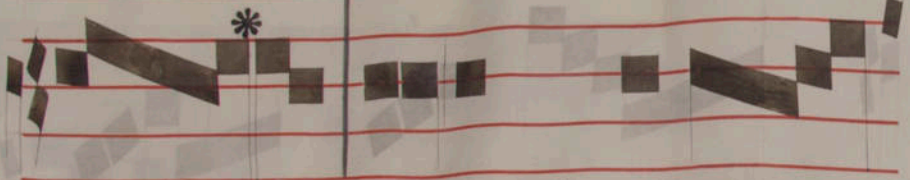
Ilite po rtas

princi ps

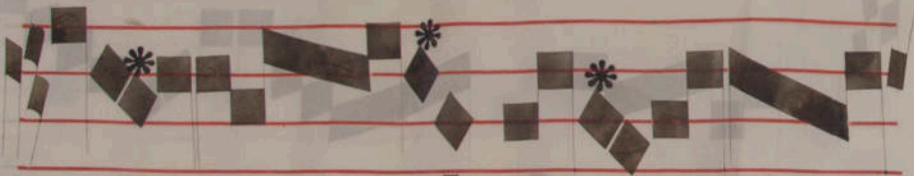
ue ita

set de ua mi

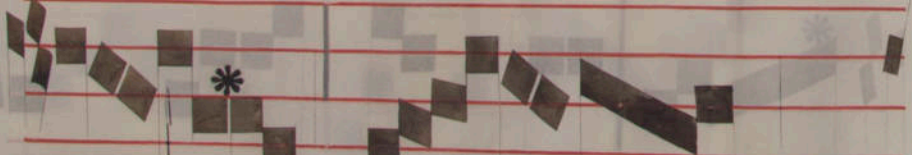
eterna le



s: et intro y

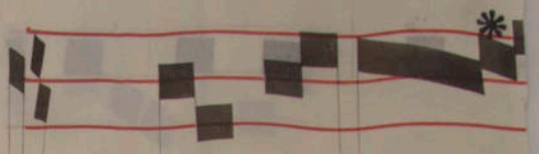


bi

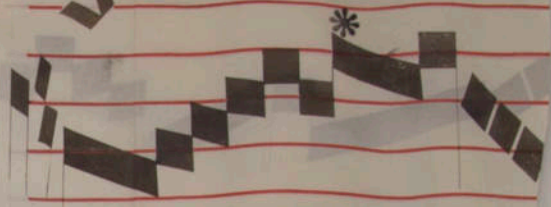


ti et x

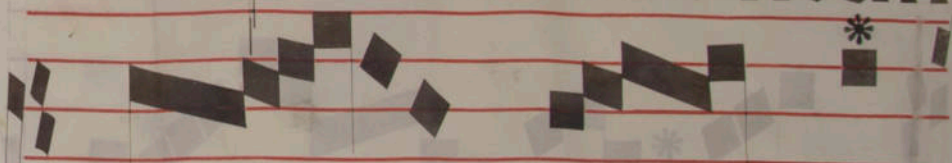




gloria



ascendet in montem



do mi ni:



aut qui

it in loco fā

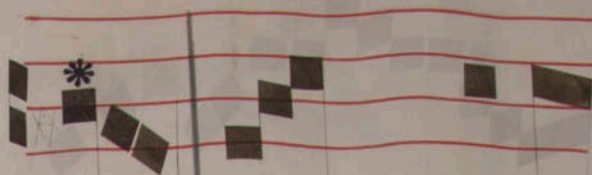
us innocens

ma

ni

bu

s, c



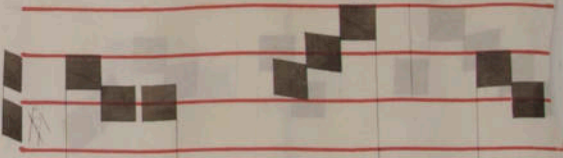
lo quetu



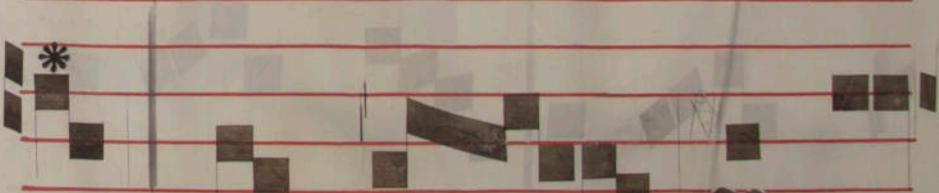
o sine u



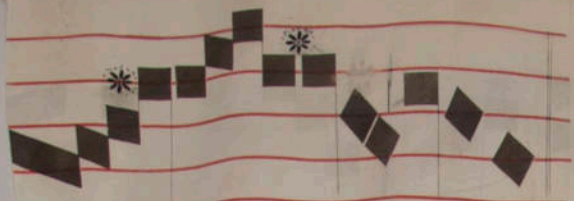
m et be



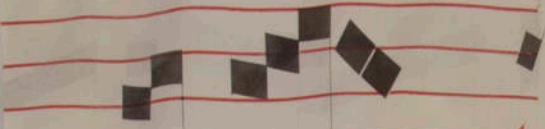
o mni scio



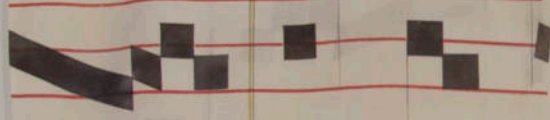
no me in factus



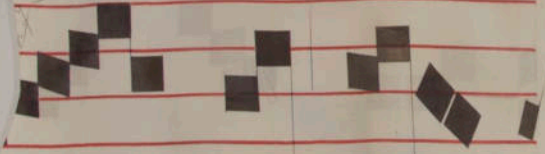
8.



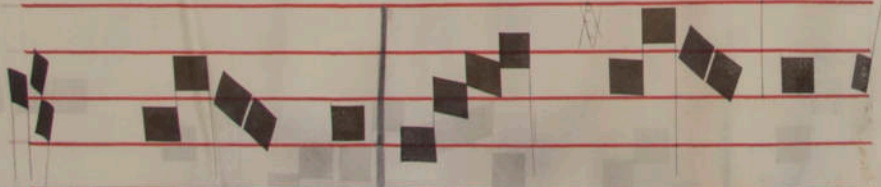
onforti Off.



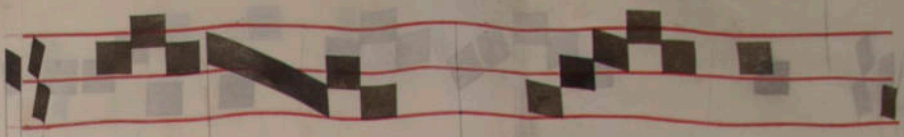
et iam



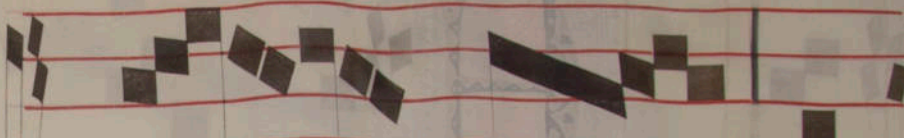
noli te ti



me re e ce e



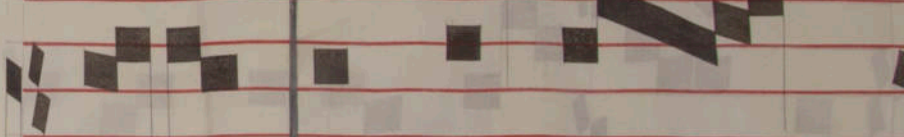
ni p[er] m[an]u[m] d[omi]ni



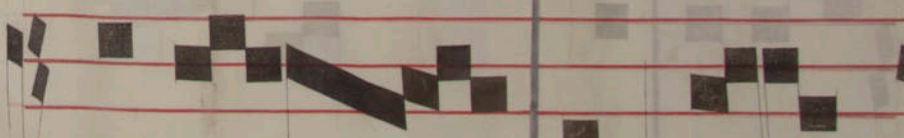
no[n] ste[n]dit



tri[bu]t[u]m iudic[i]i



um ip[s]e ue[n]it



ni ed[uc]it[ur] i[n] t[em]p[or]e

uos non sicut

at. **Cō.**



Et con

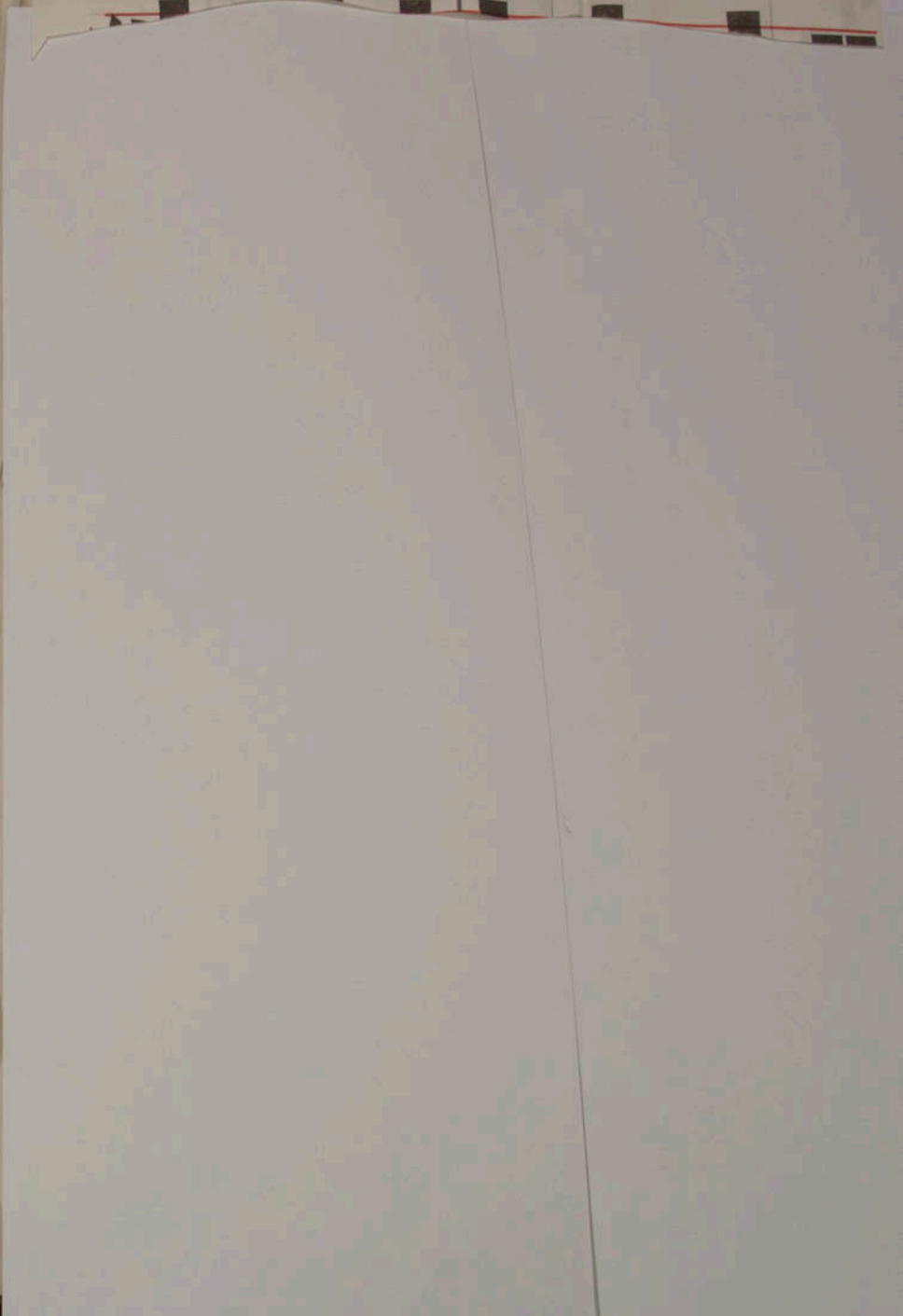
uergo concipi erunt

et pa et fili

us et uo ca bi



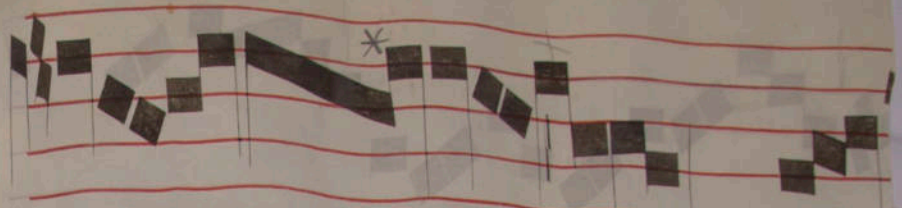
macula tē inui a:q



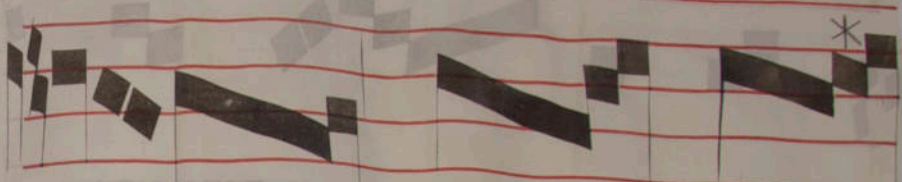
æ no bis dōmīne

no bis

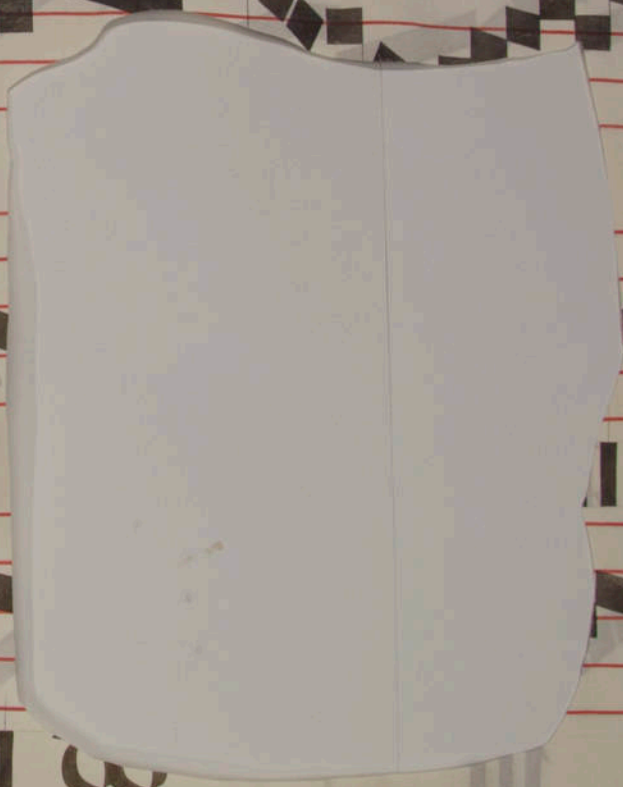
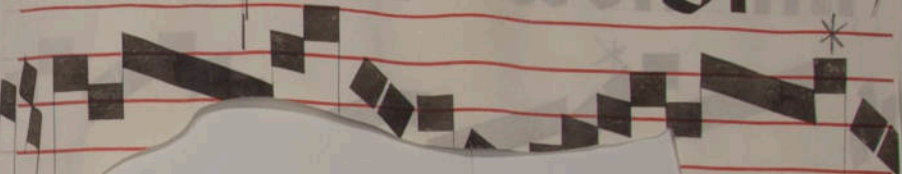




גדו

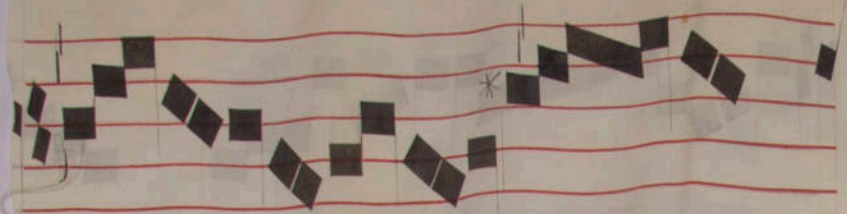


וּבְיָמֵינוּ

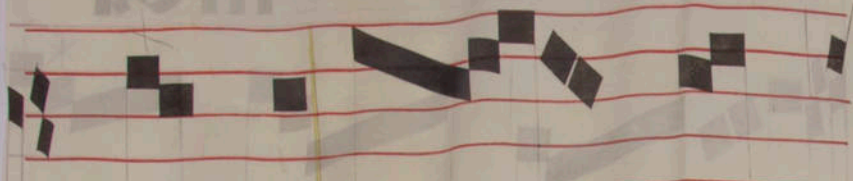


וְיָמֵינוּ

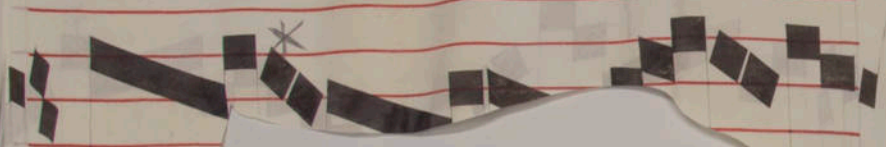
וְיָמֵינוּ



LO III



mi ne te o m m m



tu



IX



tu

o m m

capitula uita tenia

co b.

*Offic.*  
Deus  
tu con  
uertes



Ccedomi

co

nus ueni et e

nes sancti eius cu

memo: et eu nt in

di e illa

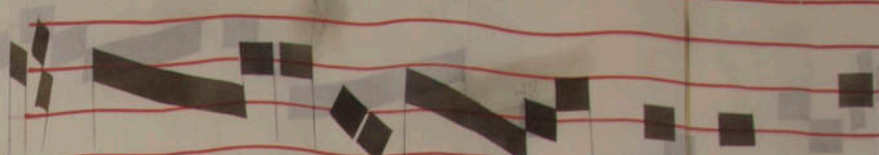
ma gna .ad mi

Et nict rtus.

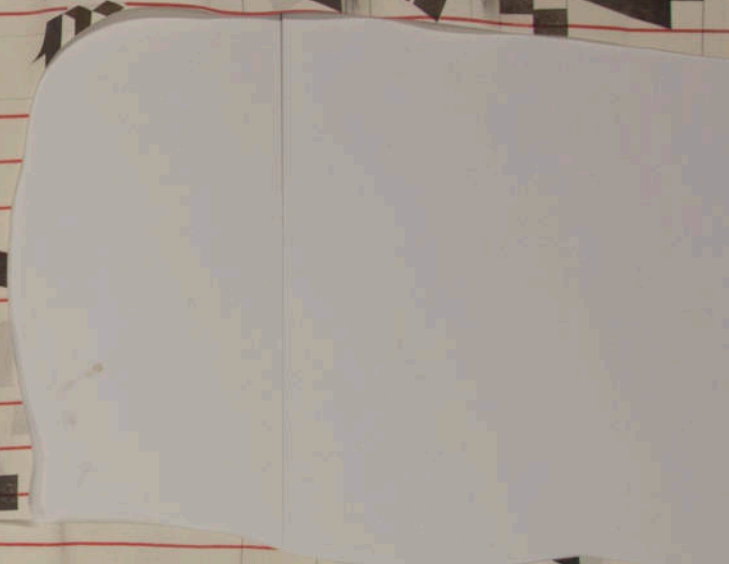
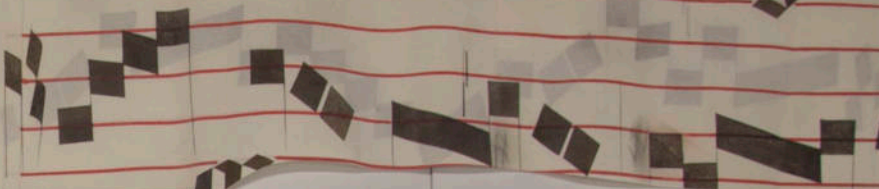
stende nobis

*S. I.*  
*bito*

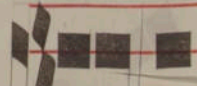
*nam*  
*Intro*  
*rtus.*



cc III lo egre



III



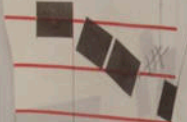
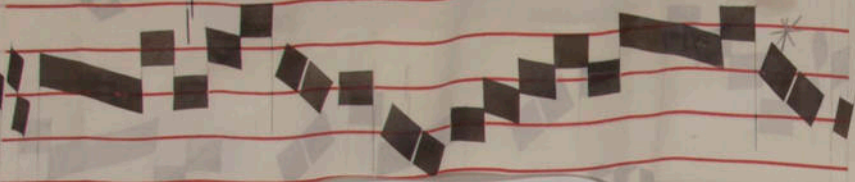
et occurſu ſc



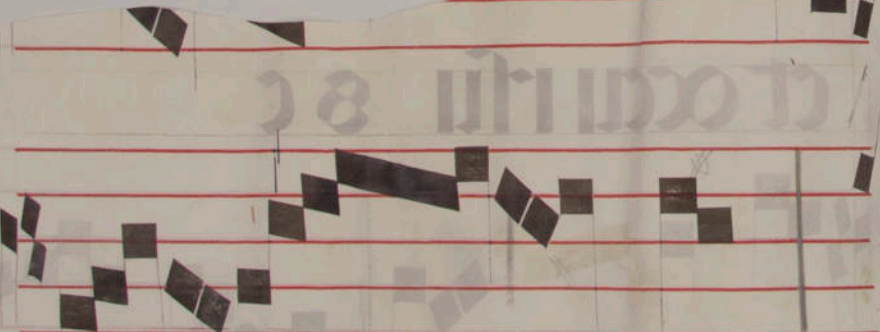
III ſ uſq; a

rosumus c

III

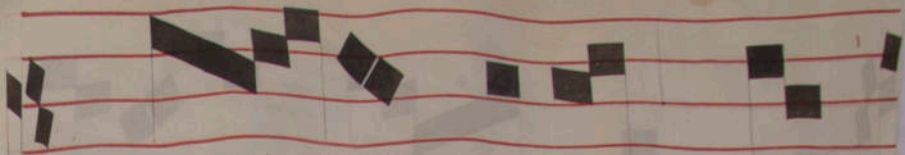


III

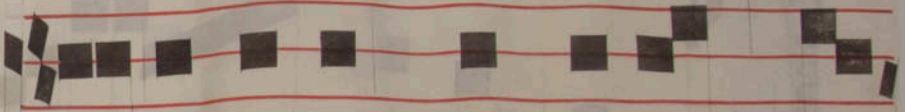
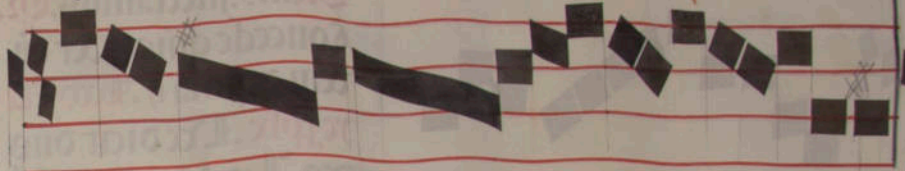


i. phi 8

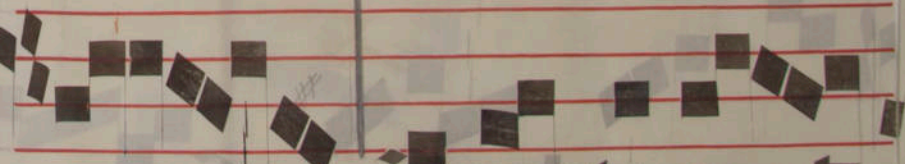
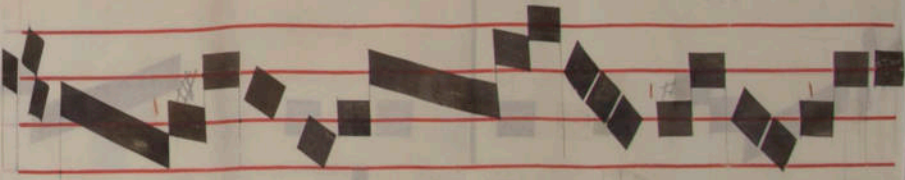
nant



glo riam



et opera manuum eius



sunt aut

firmamc ntu

*Oratio. flectamus. Oratio.*  
Concede quies. *Idem. pph. ij. Loco Esa*  
*ye. pph. Lxx. dicit dñs*  
*des. Let. tibi deserta. Qu*  
*finit. Oratio. Oratio.*

III,



In sole po suit

do min9 taberna

cu dilu m su






li



et i psc



spo nfu s pro



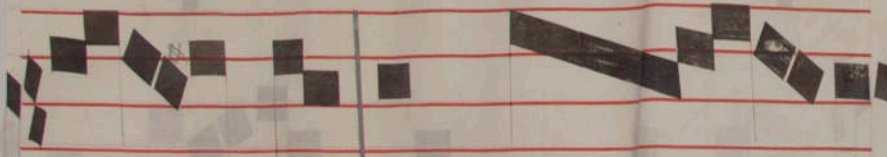
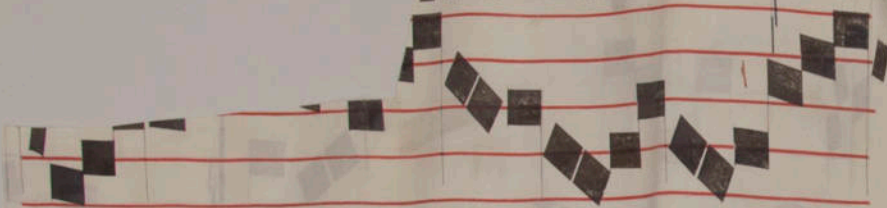
cedens de tha la



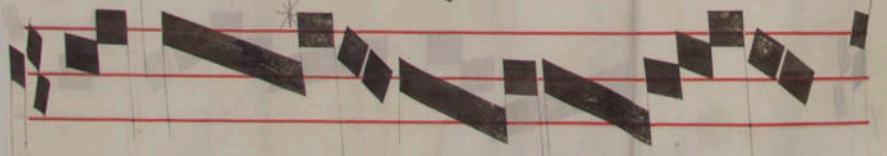
mo fu o



no ce

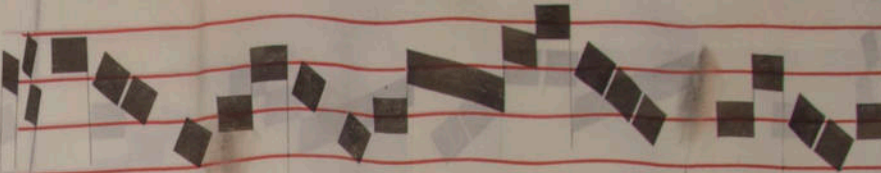


lo egre ni



o c

  
allius et occurſus

  
e

  
s uſq; a

  
o ſumus e

*Oremus.* flectamus. O  
Indignos nos. p. cum  
de; Adrophia m. Acco  
Et. re. p. h. e. De dicit  
ois. Sup monte ce  
cellis. Qua finita d; *Gr.*



**D**omine deus

uirtu

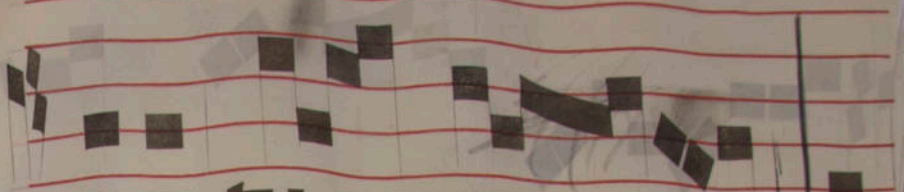
tus

conuertere

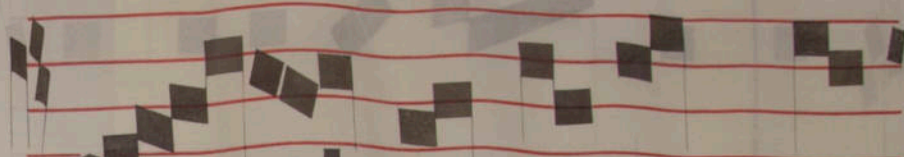
ino

s: et ostende

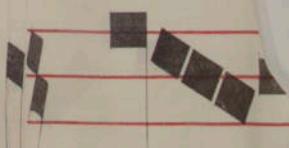
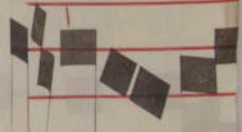
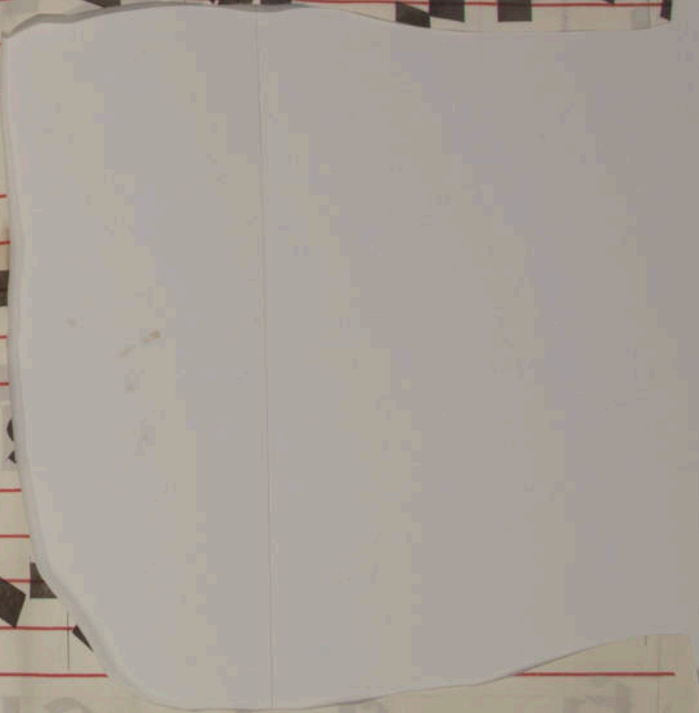
fa



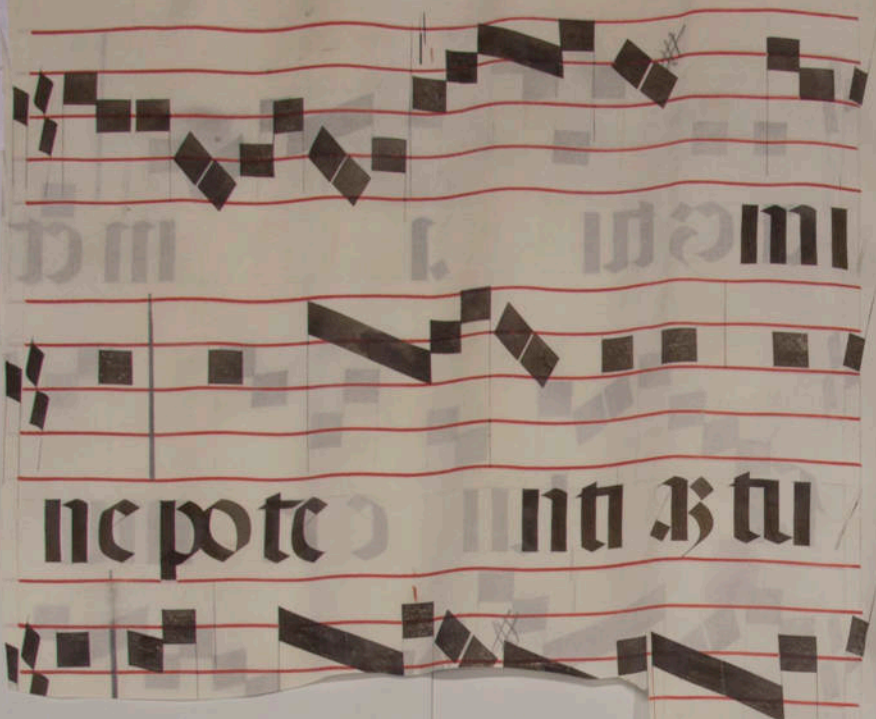
acti .i. met



la .i. lu e romu



oo



ne pote nti & tu



luos

fa ci s no

*Oratio. flectam. O*

*Idia quis. per cui*

*de. pph. iiii. Ecco*

*Elare. pph. Dec dia*

*ois. Christo meo.*

**S.**

*Quasinta di. Or.*

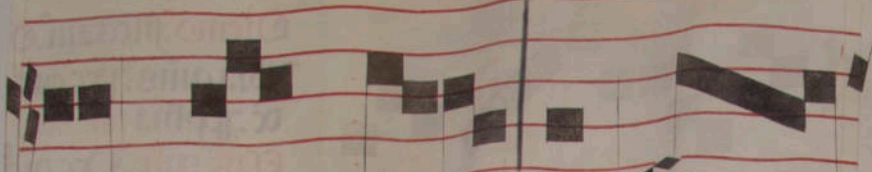


**Excita do**

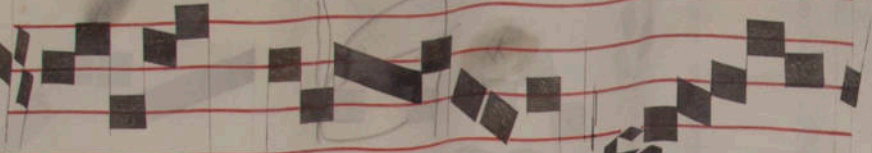
**mi ne pote**

**nti**

**ACTIN 87**



et ue ni ut sa



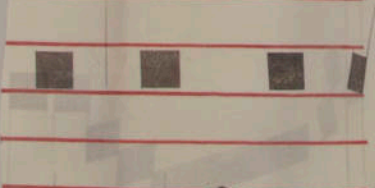
luo s fi



ci a s no

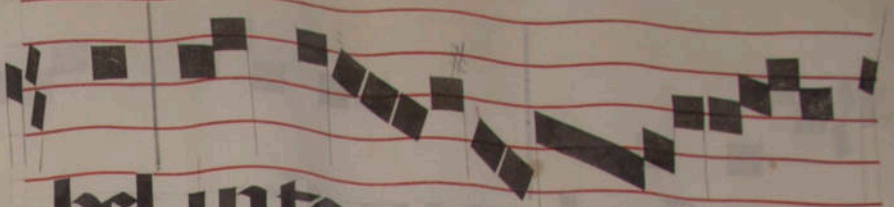


**S. V.**

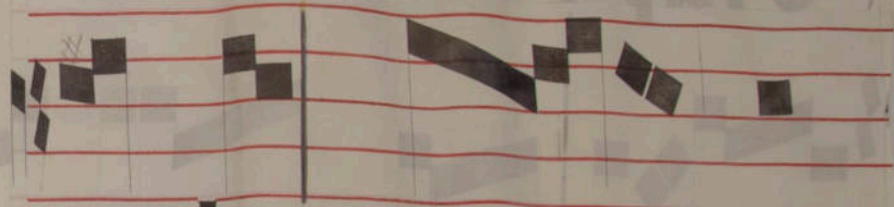
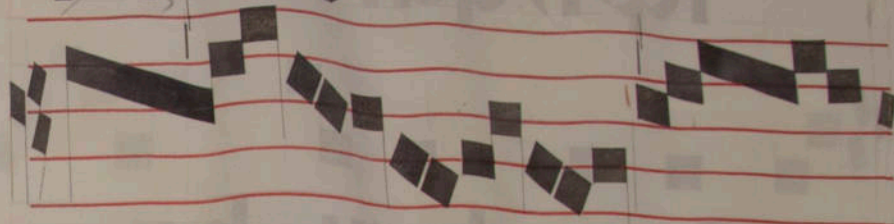


is na





bel, inte

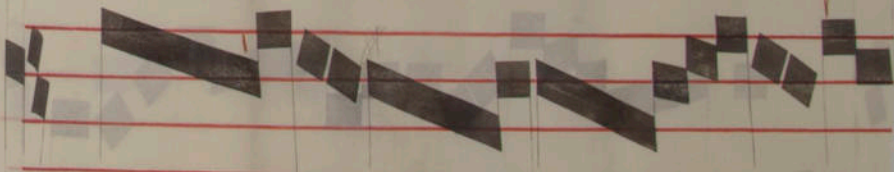


nde: qui

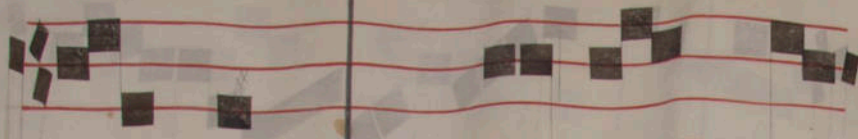
æ



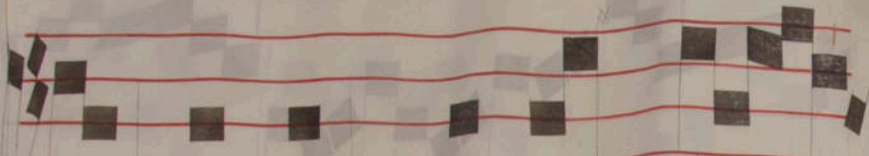
duas, uelut ouem,



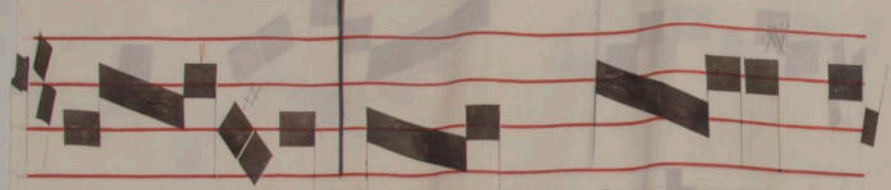
10



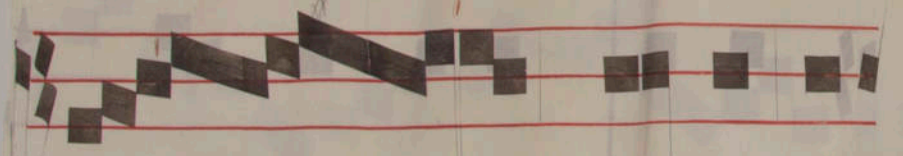
seph: qui se de



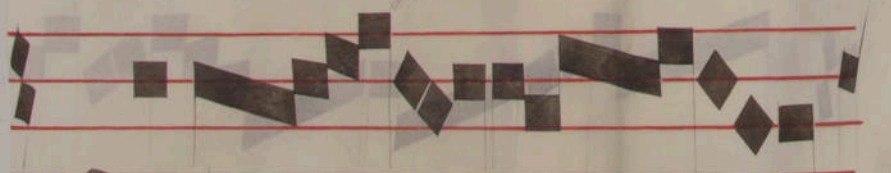
super chru bi



na pp: a b n r e



co r a b e



na i

nedi

glo ri et ue, & quod

est sa nctum. **&** Et

lauda bi le

ri o si um

nedi

ctus es in templo sã

cto glo rre tu

Et lauda bi l.

nedictus **v.**

cti /

Et l.

dictus

trus

se


om i

nos,

nedi



ctus es qui.ambu



las super penas uen



torus et super undas



o. f.



c

omnes angeli et s̄i

cti tibi **R.** Et lau

dent te et glo ri

me



te ce li ma ... et o

ni a que

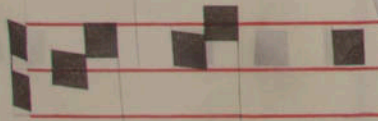
ri d'isso.

ipatri et fi li o et spi

ri tu i sancto .

bi li .

princi



et semper et in se cula

secu lo rum

aur

ic di

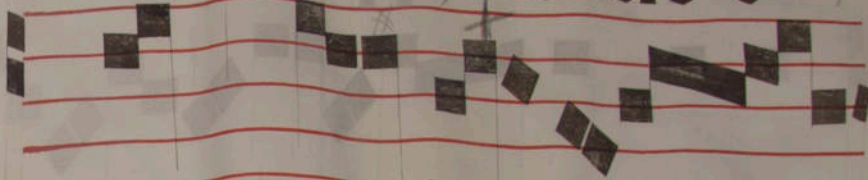
es do mine de

trum nostro rum

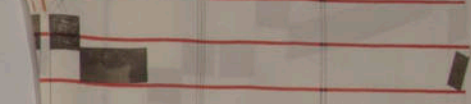
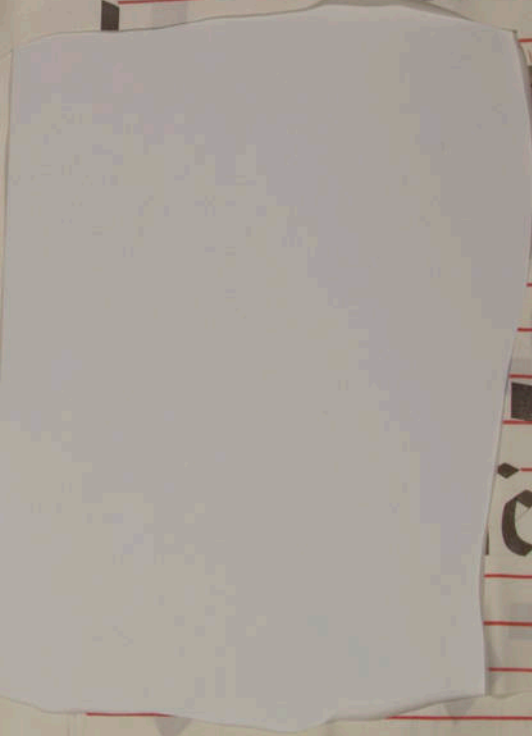




sue luto



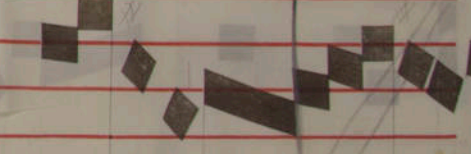
uenio se



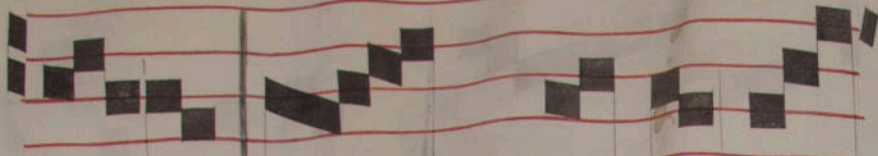
ph. vto.



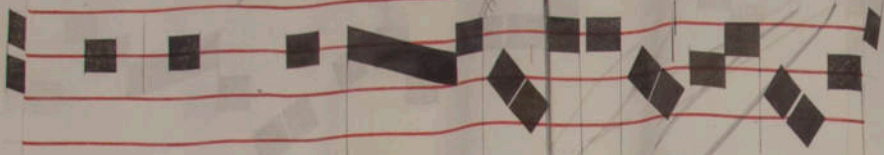
tes lu



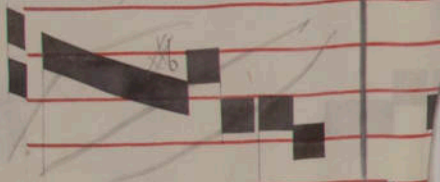
per cherubi



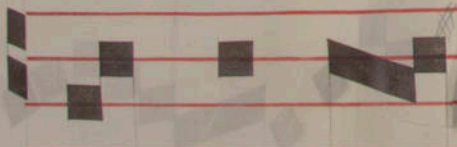
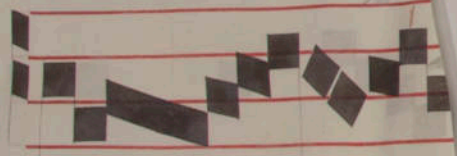
na ppate co



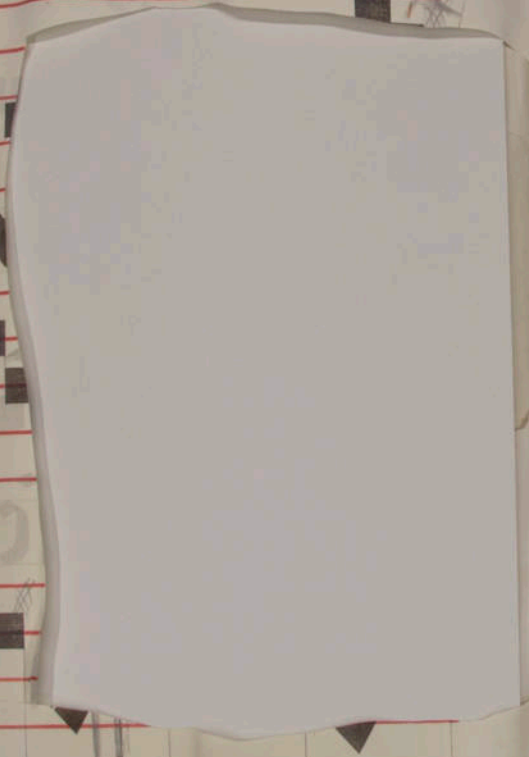
rab effia i



in b

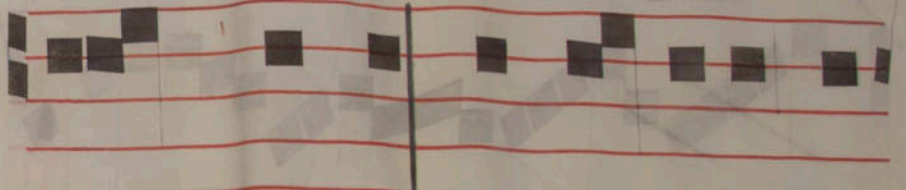


nalle

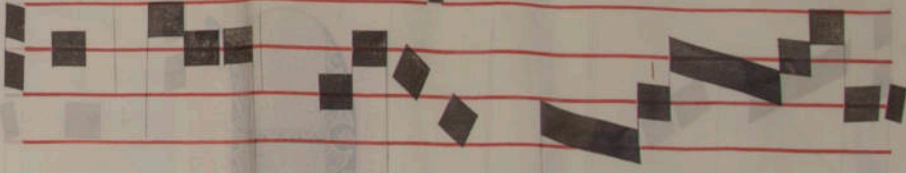




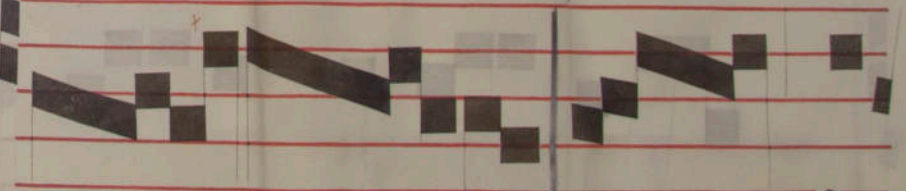
ta do



mine potenti a tu



et ue ni



tu ta

a

18110

s. Off.



Dei tati ns fili





a sy o



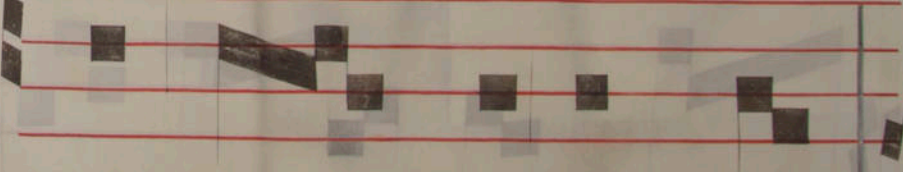
predi ca fi



ru sale



ccc re xtu mus



niti b sanctus

11

toꝝ. **Cō.**

xulta uit ut

s ad curte

noamui x a fu

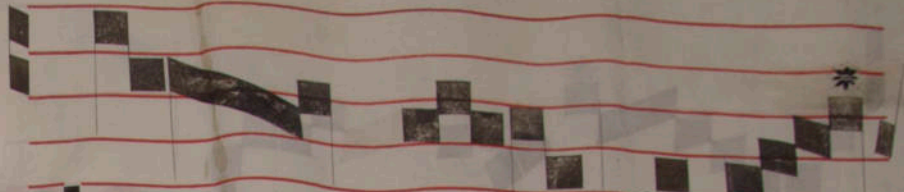
mmo ce lo

egre si o c ius,

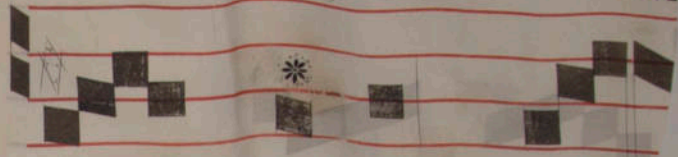
ursus

eli de sup. *Re.* *Adro*  
 nus. *Alla.*

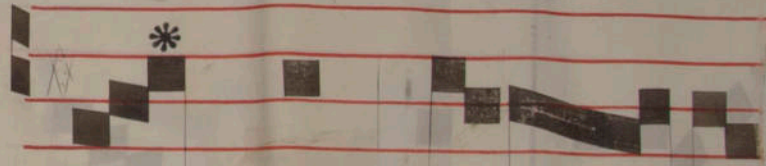
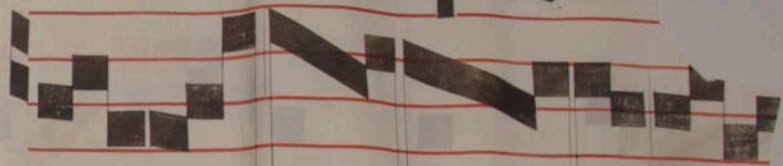




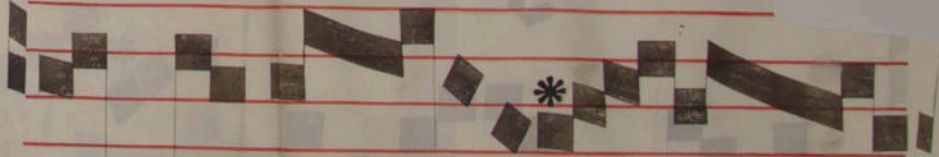
la xa fa



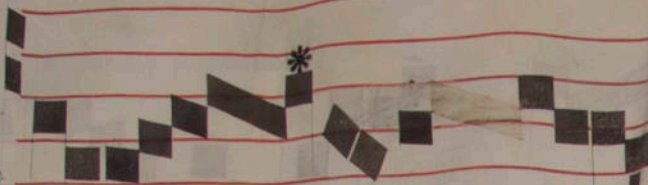
noxa ple



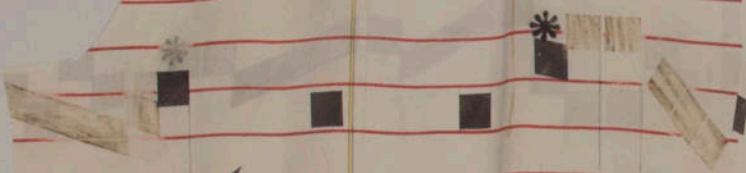
bis tu c



lia c



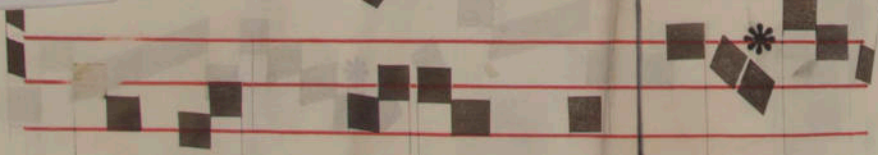
*Off.*



**Ex** mari



agna



ti a ple nato



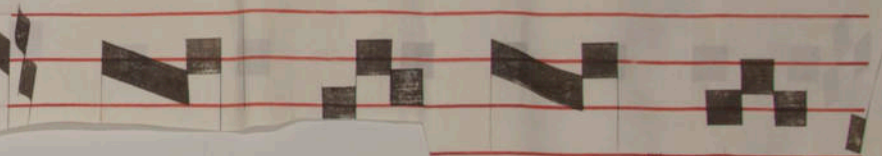
tis qui



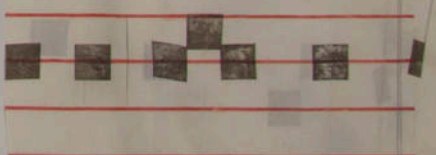
et dominus et sal



ua bi nos et ma



ce ubi



Deus.

ni ni est **v.**

terra et plenitudo c

ius: orbis terra rü

et uniuers

tant inc



ni

an

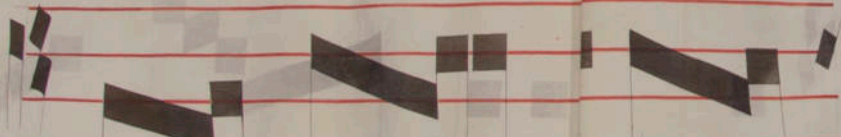
di c

tis quae ni

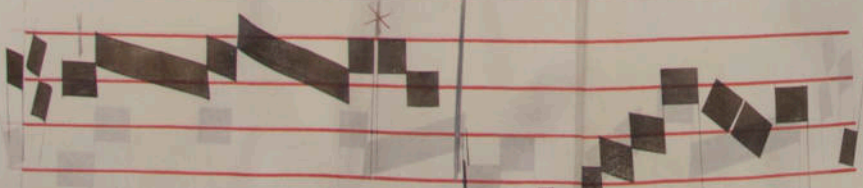
c tuo minu



ma



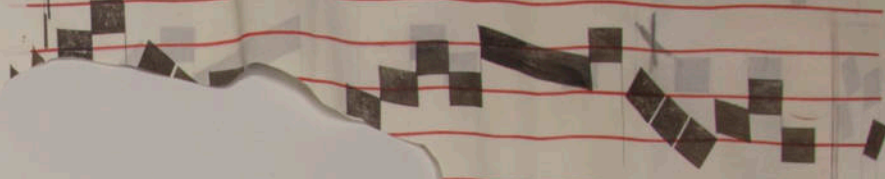
ui x u u bti



s glo



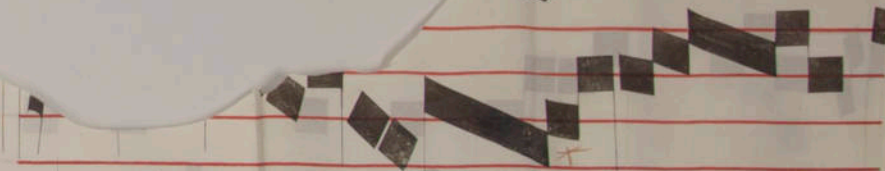
ABC IUI



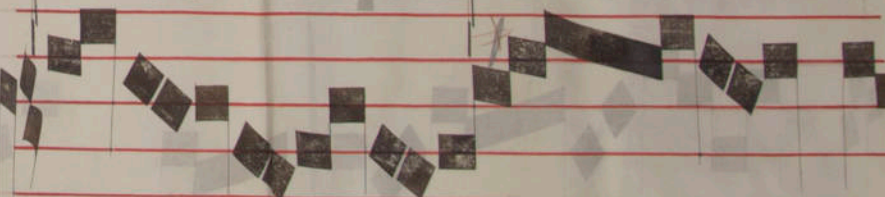
S. V.



egis Isra d



inte



nde:

qui reducis

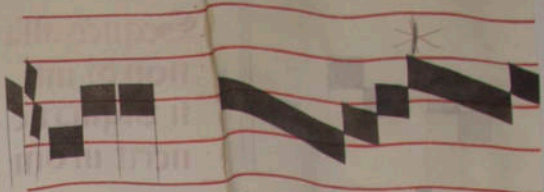
vedut ouc

se & super cheru

bi

na

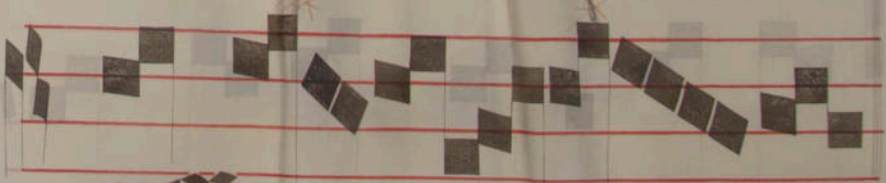
ppa



re



beniamin et ma



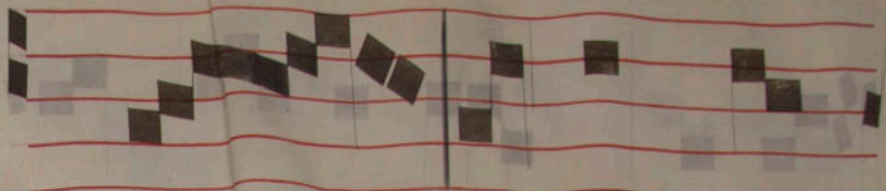
naſce

Sequens alla  
non dicitur nisi  
si vigilia ve-  
nerit in dñi  
ca:

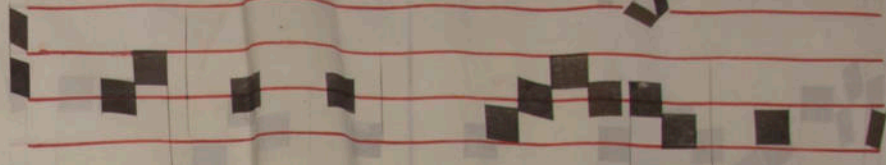
le lu ya

na di ca de bi

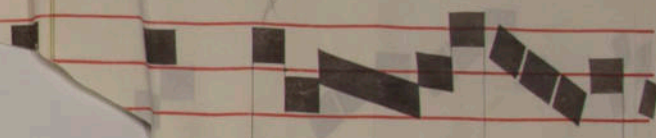
tur in qui tas te



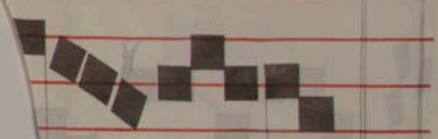
re et regna



bit super no sal



di



c po **Off.**

rtas p<sup>r</sup>incipes ue

stras et e<sup>l</sup>le

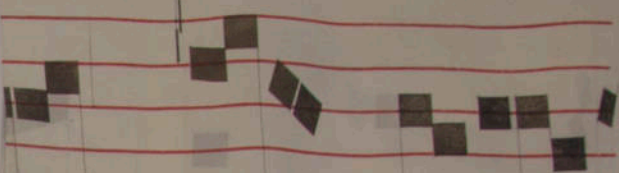
ua

in

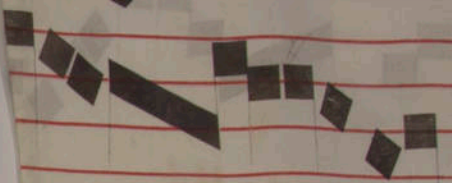
te e<sup>t</sup> te

et intro

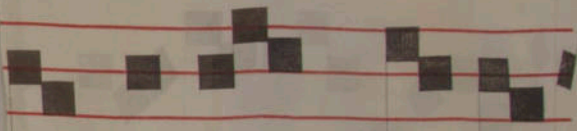




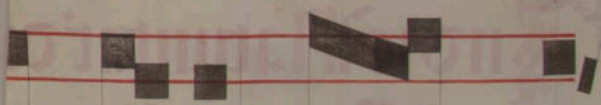
rglo rri c



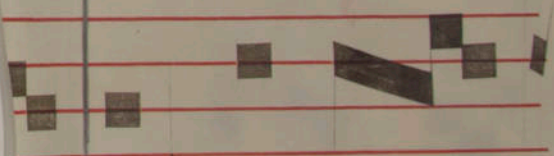
.Cō.



Euclā bitu

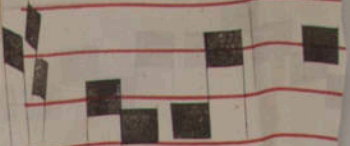


ri adō mi

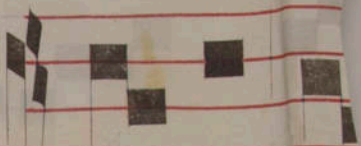


: et uide





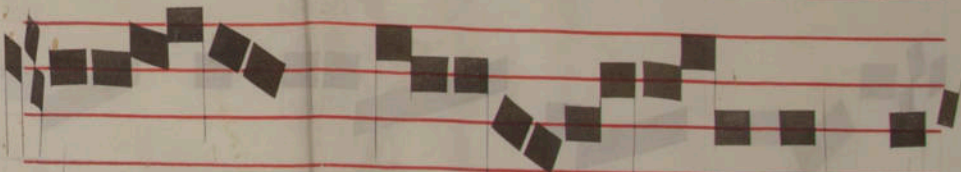
ri a pa



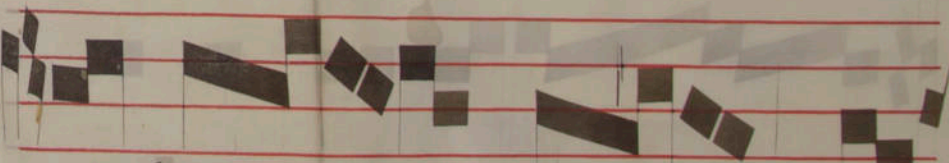
loribus



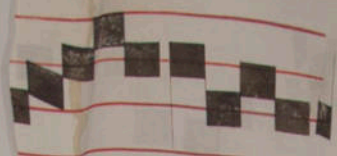
cus principi



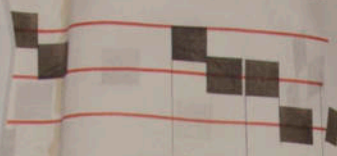
indolentibus



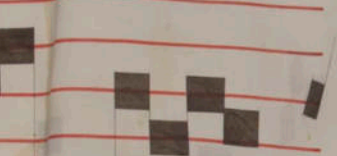
ritu tisti



bu s

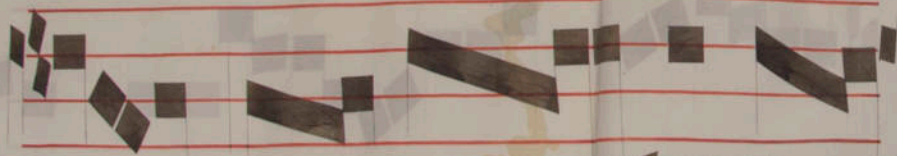


bu s



sancto

ru

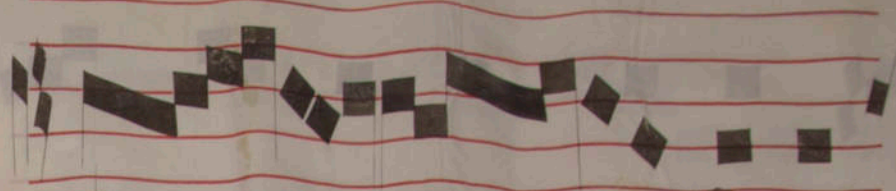


me xu

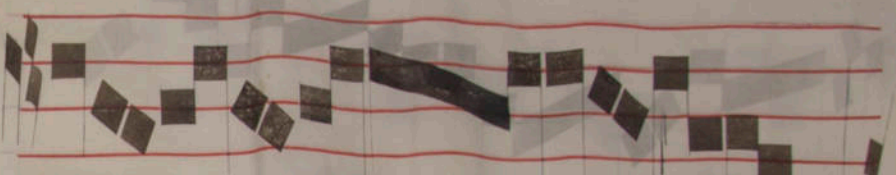
tero



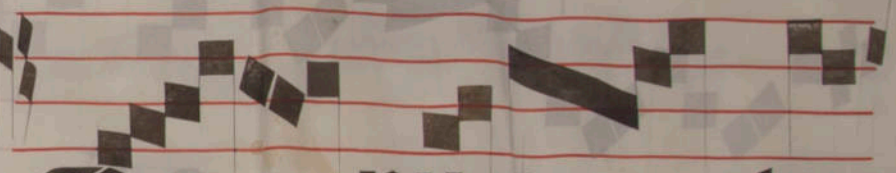
antelu



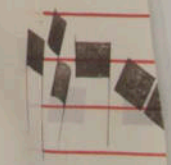
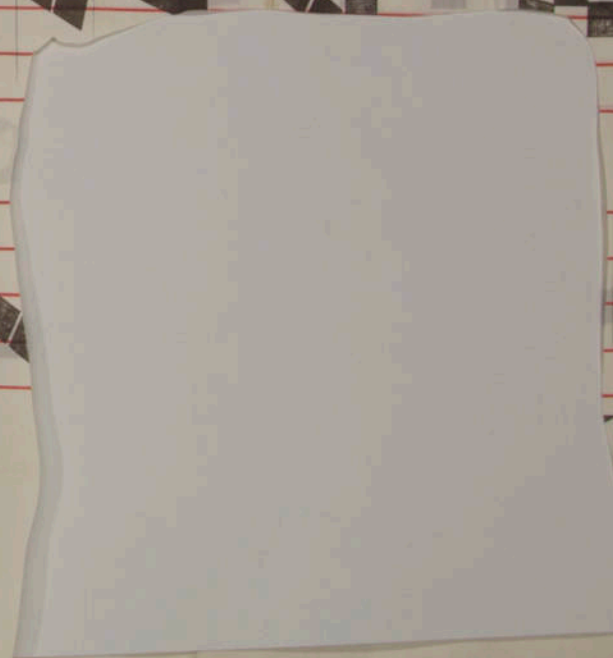
clm omniuo au feru



m

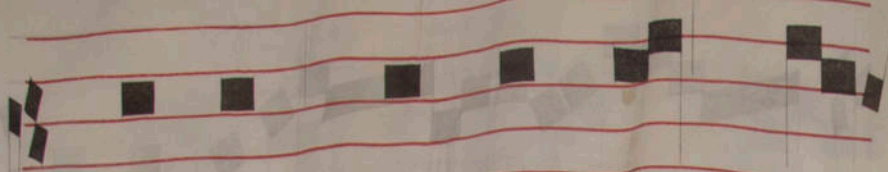


ge nu i te

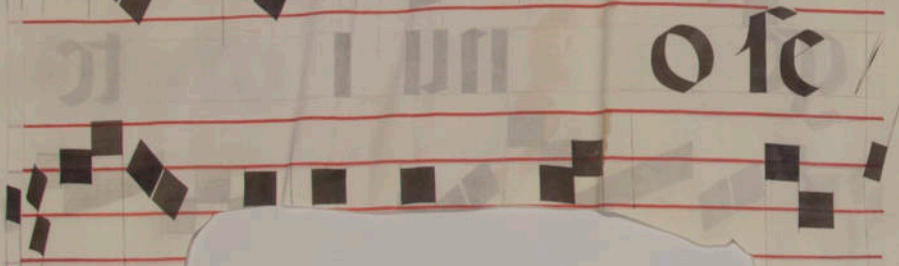
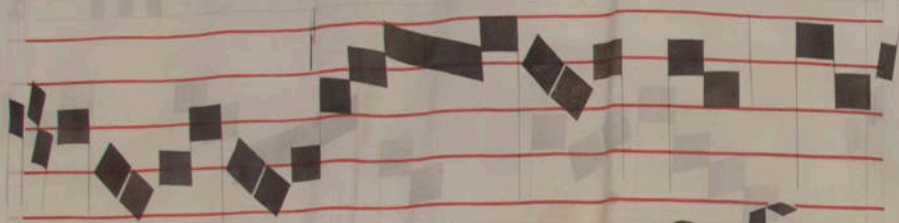
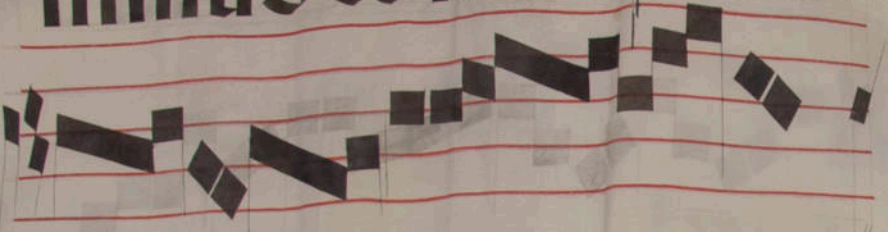


81

oo



minus domino me

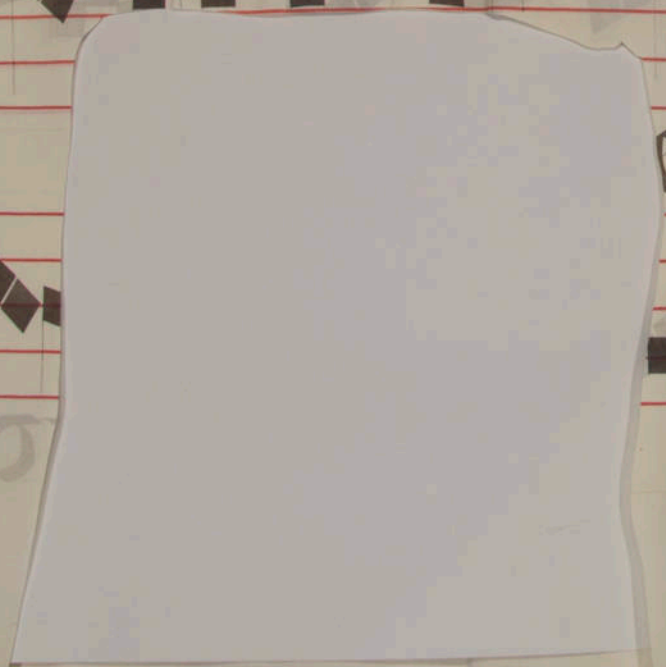


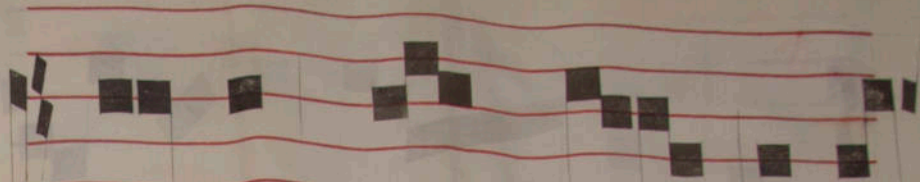
o fe



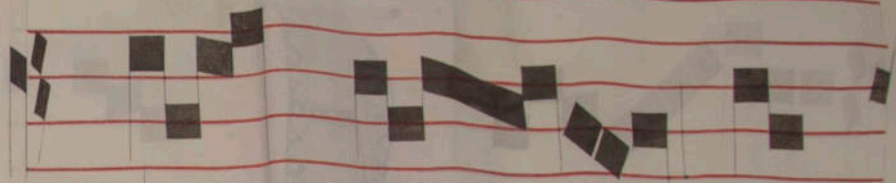
oo

18

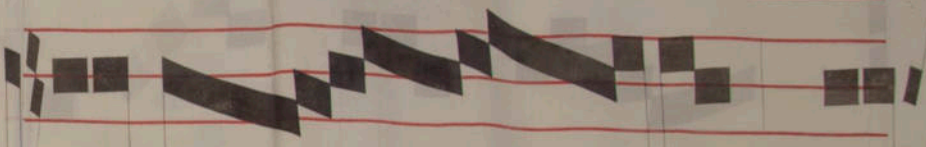




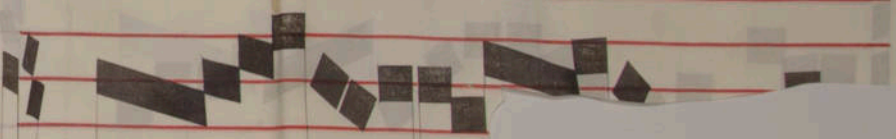
do nec po na m mi



mi co stu



o sica



lx



summi



dituo

ru



in

le

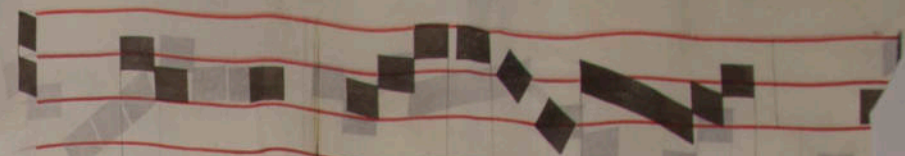
lu

va

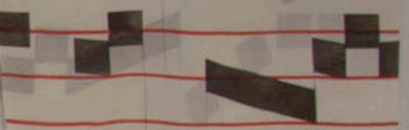


minus





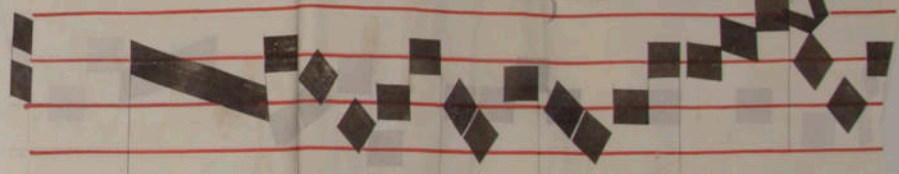
I un dmo



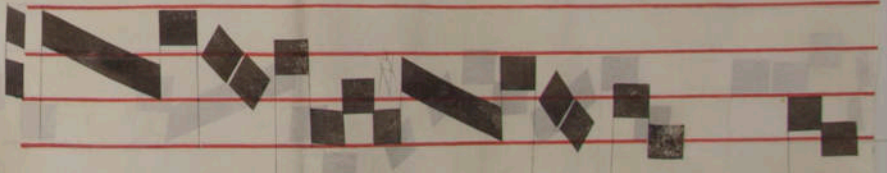
uis c



stu c mo go



ho ne ne no



no . . . . . no

ge nu i

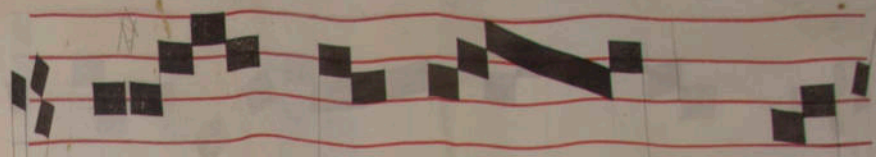
tentu rce

li et exu lte r te

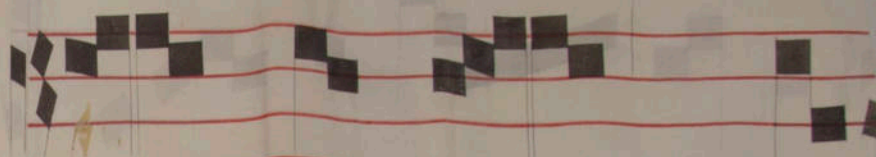
ra

a

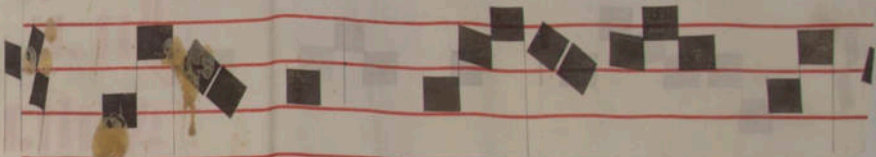
nte



fa ce m do



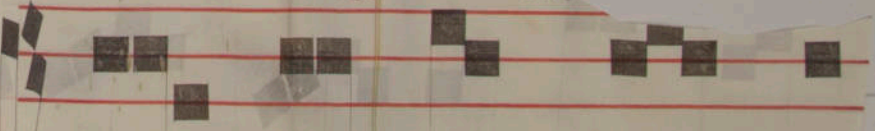
mi ni quo



ni bu cu



t. Co.



toribus sancto ru

exu te ro d an

teluca in feru m

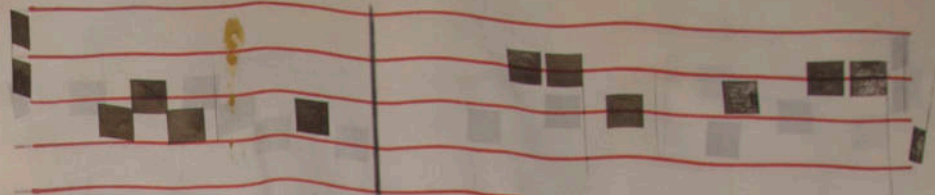
*In. ii.*

*Dissa*

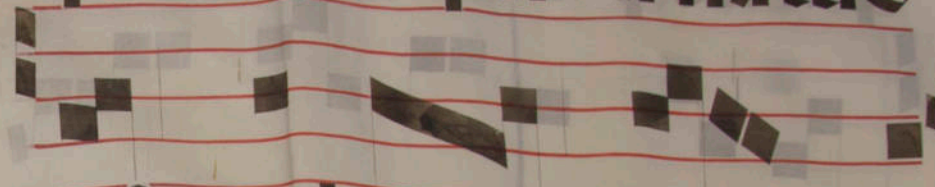
*Intro.*

Ex fulge

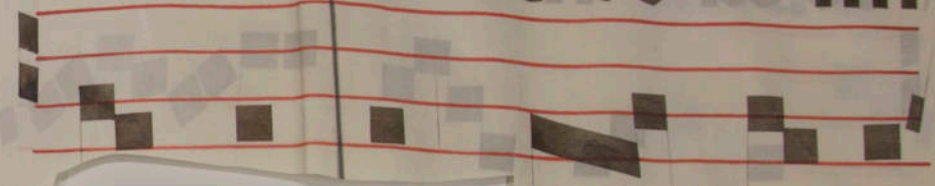
bit ho di le i duos



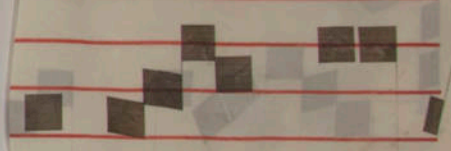
per nos: qui natus



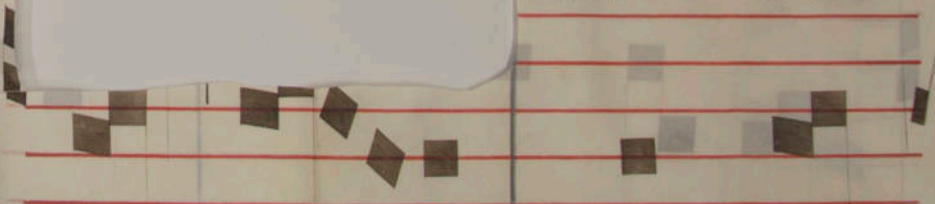
est nobis: deo mi



oia: ubi



na: ubi



lis: deus princeps

pacis pater futu ri

se cu li: cu ius re

qui non

fi d ni

minus regnauit de

is est: i

ditus est dominus

fort

an

ri

rum a

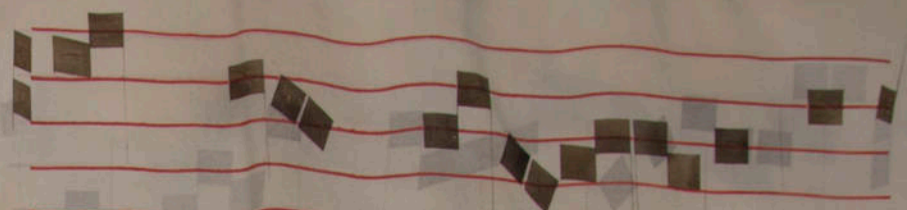
ne dicitis qui ue

ds mi

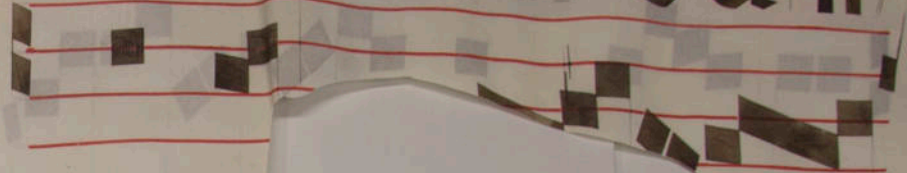
id

on

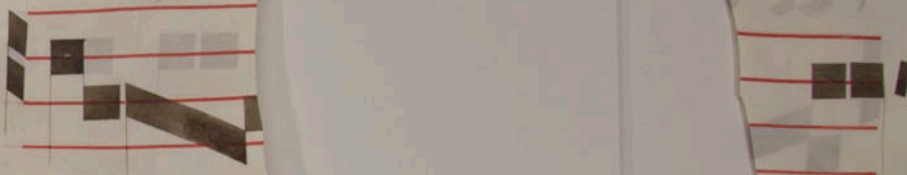




... m m n u ... s et il



luxu



o m

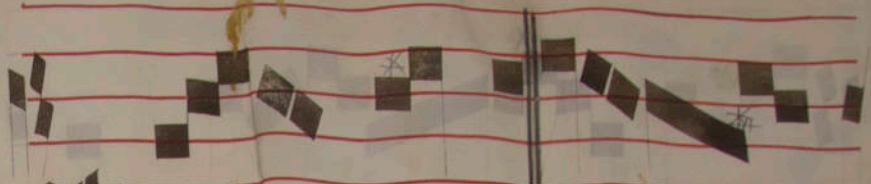
oo



Handwritten musical notation on a four-line red staff. The notation consists of black square neumes. Below the staff, the Latin text "factu in e" is written in a Gothic script. The paper shows signs of age and wear.

A large, irregular white paper cutout covers the central portion of the manuscript page. The cutout is roughly rectangular with jagged, torn edges. It obscures the musical notation and text underneath. The text "ctu" is visible on the left edge of the cutout, and "no" is visible on the right edge. The background shows the continuation of the red-staffed musical notation and Gothic text.

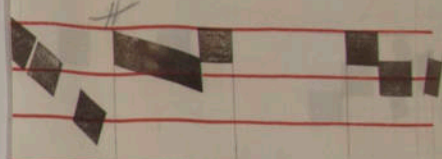
The bottom portion of the manuscript page, showing the continuation of the musical notation and text. The text "no" is clearly visible on the right side. The notation consists of black square neumes on a red staff. The paper is aged and shows some staining.



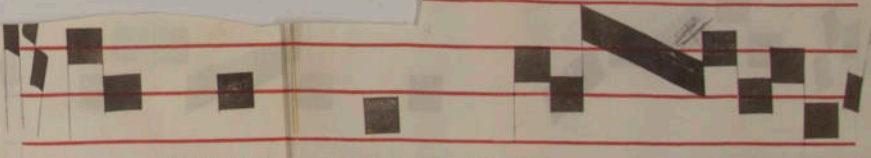
Ve lu ya.



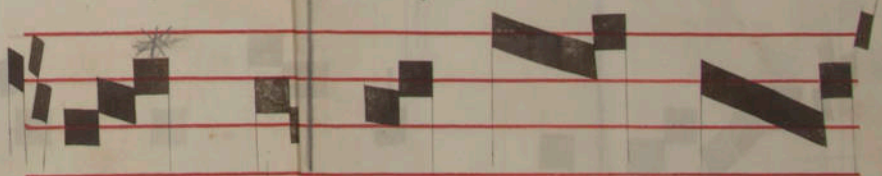
**V.**



mi



nus regna



unice co re

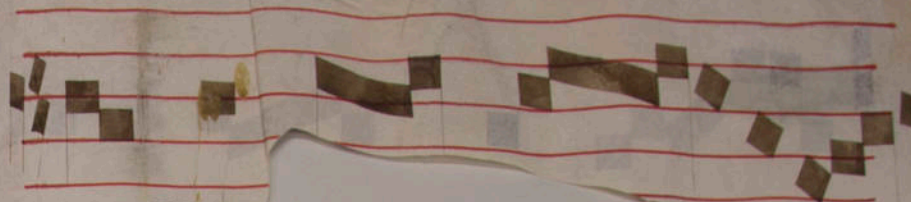
mi . . . . . ndu

it:indu

mi nus

tu . . . . . dine

in, et p̄ec̄ inxit se



III

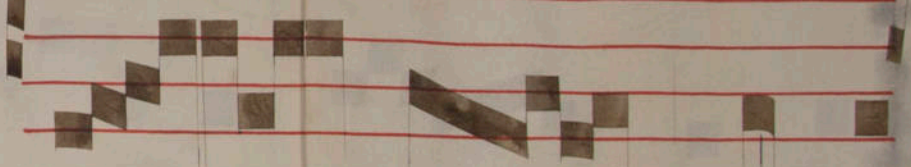


Q

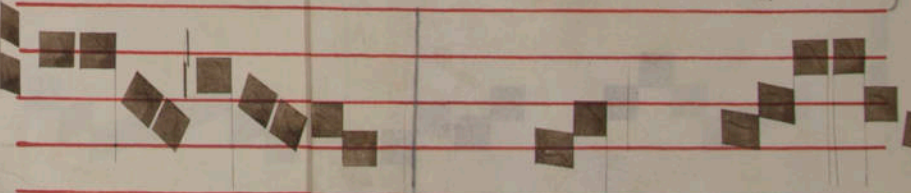
US



ens firma dicit



o rbe in terre,



qui no

uc  
bi ta  
fe de stua de  
us ex tu ne, a fe  
cu lo tu

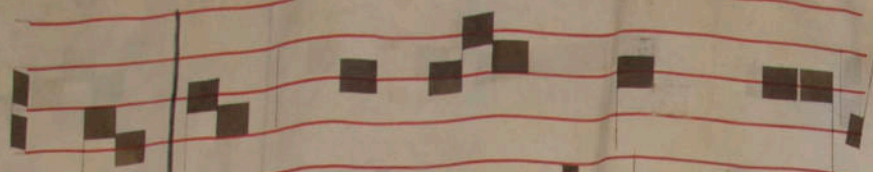
est no bis et fi

lius da tus est

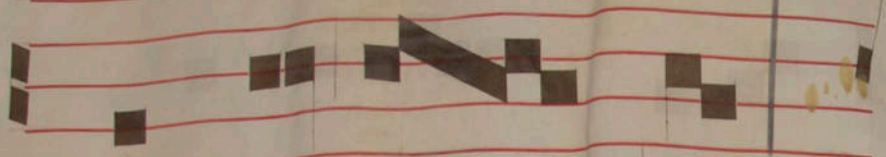
cius im

super bu

me rito



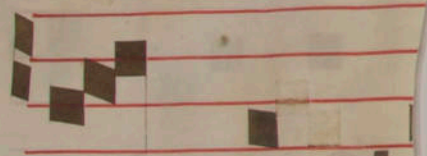
IUS: et uoca bi tur



nomen e IUS



magni co



nge lu



nta te domino ca n



tiab no ulk :

li a

tri et fili

lorba men. **K**

derunt o

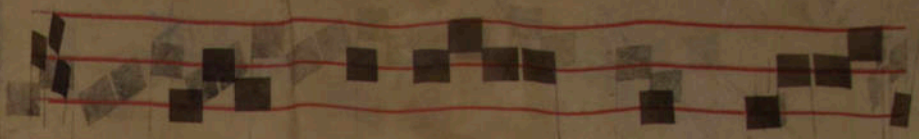
ies fi

no

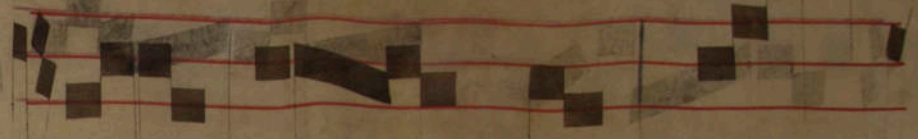
stri iubi late







ple nitum dino



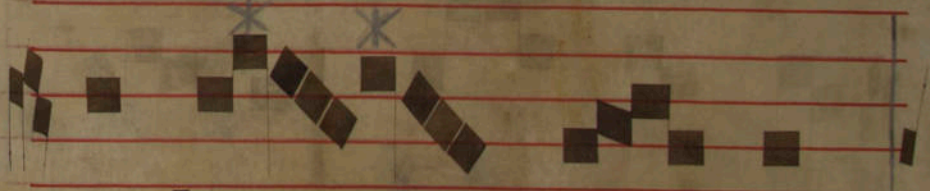
e me iustu



funda sti: iusti



il esultat a cot



iudi xrum

preparatio

seculi

tu e .CO.

terunt omnes fi

nes te re

us me

us qui a seruo

tu us exerceba

tur i

iusti ca

ni

a ti immacula ti in

ui a : quiambu

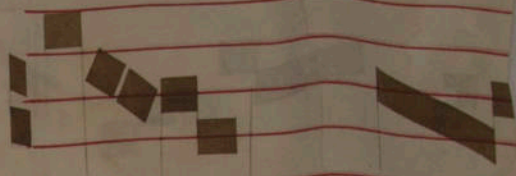
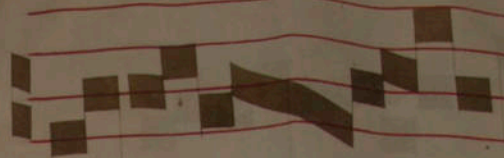
ge domini.

rd a patri.

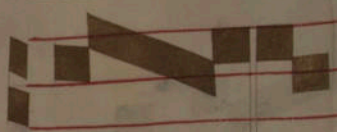




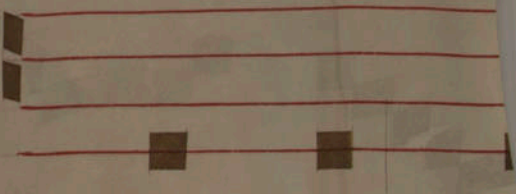




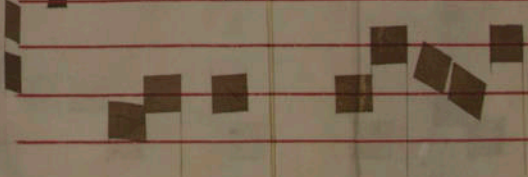
s me



s sal



propter m



di & tu i a



in



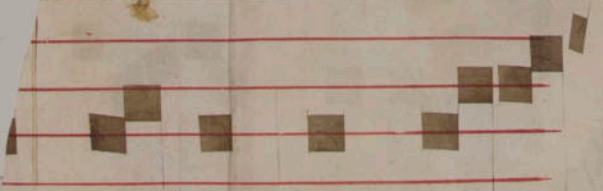
cluyra



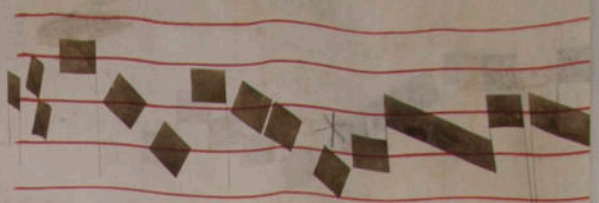
vs.



de



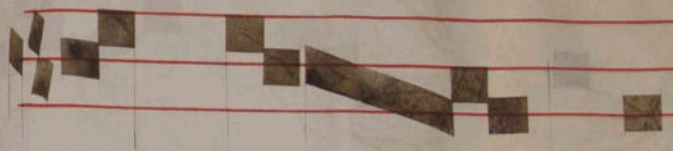
ce los ape



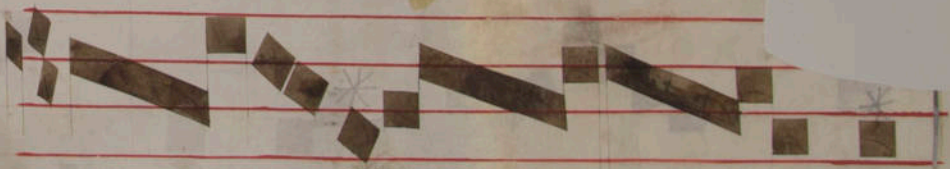
et iesus ita



nte in aet



xtri s uirtu



tis



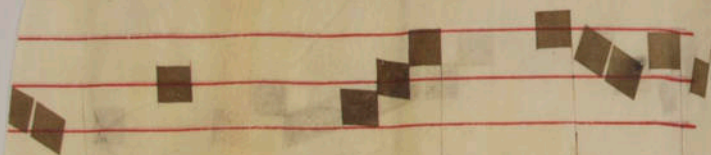
I

off.

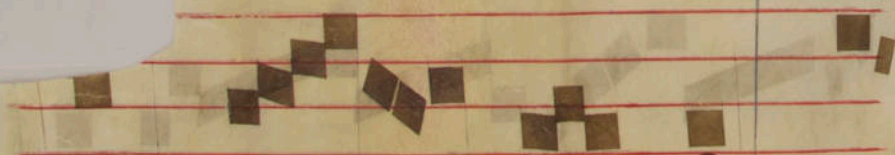
Le ge



rūt a posto



stepha nu



m le ui tāple



nu

3

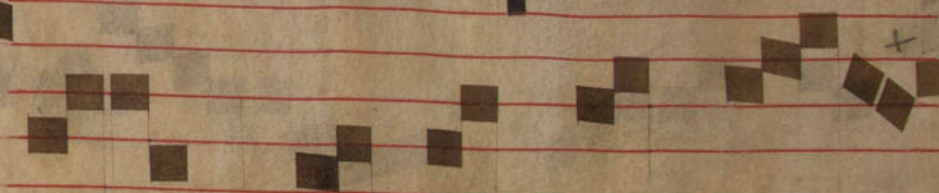


fi de

et spiri



tu sancto que



in lapida ue



annuntiant in de




l orantem et di



centem domini ne



ic sua cci

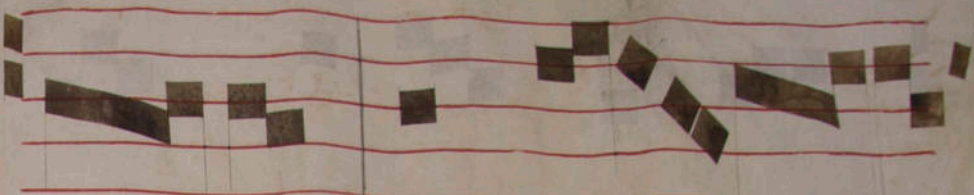


pe spi

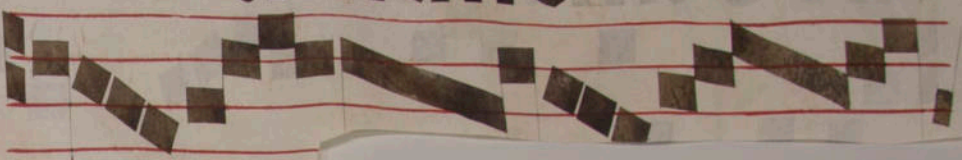


ri tum me





um alle



de o celos apertos,



et ic substantem a dex

tri s uirtu tis de

e ic

ri tum

me um et ne

sta tu as illis hoc

ri c

1. *vs.*

onfi

teri domino: et pla

lere nomini tuo



altissimi



in a



rubra



Xi it sermo inter



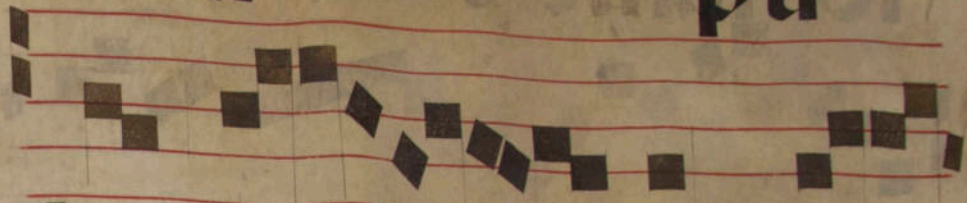
fra



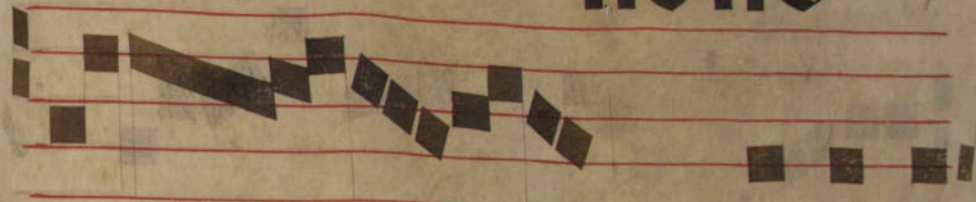
tres q



disa pu



lus i lle no

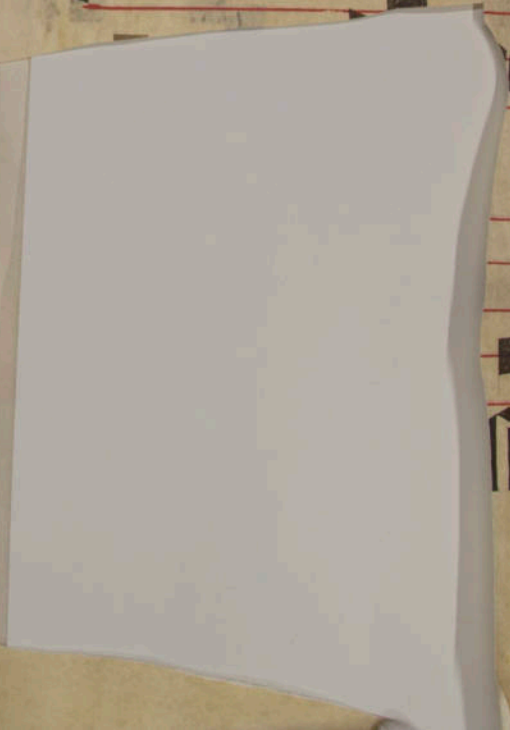


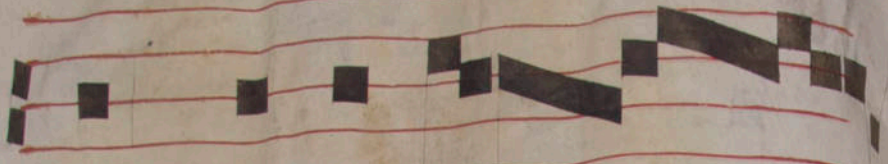
in moritu



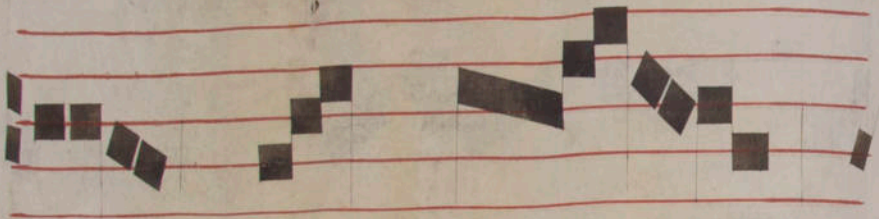
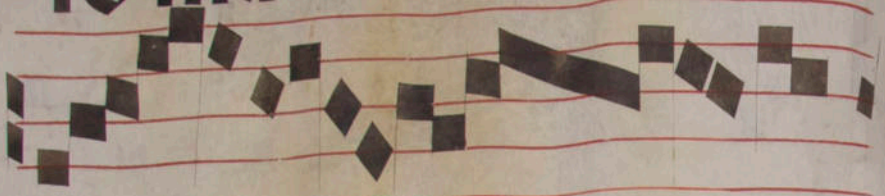
r. v.

sicc ubuo





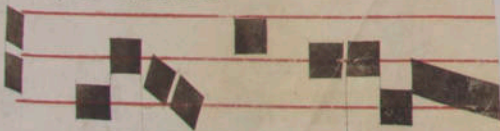
lo manere



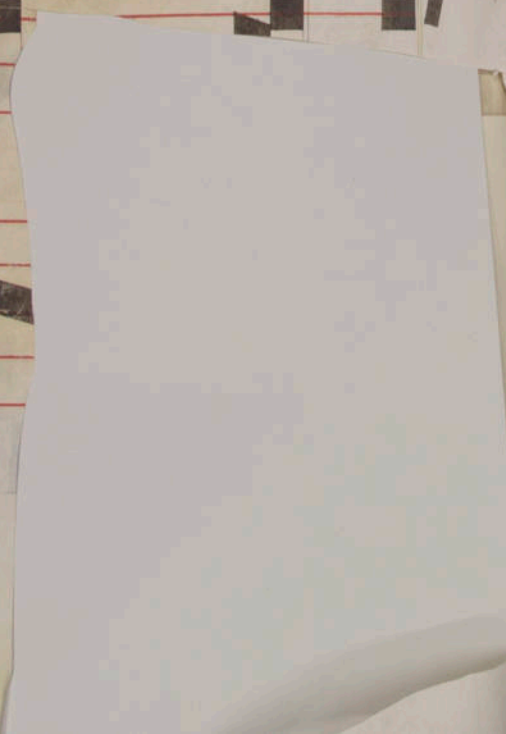
do ne c



ueni

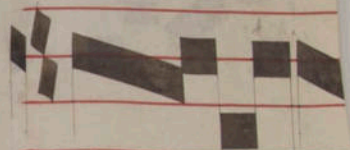


sequere



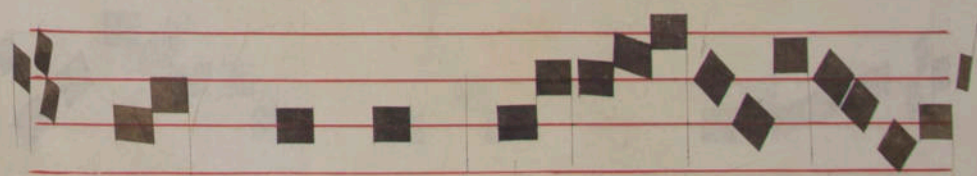


**Ueluy:**



**cc**

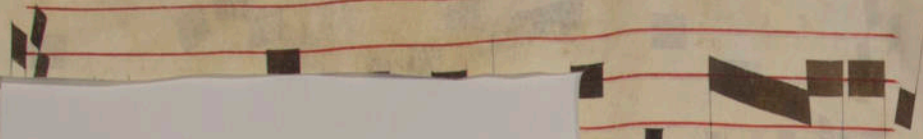
**iloi**



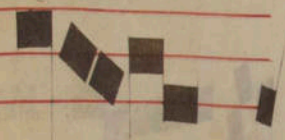
**sa pulus i**



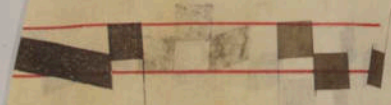
Ille qui te



erbi

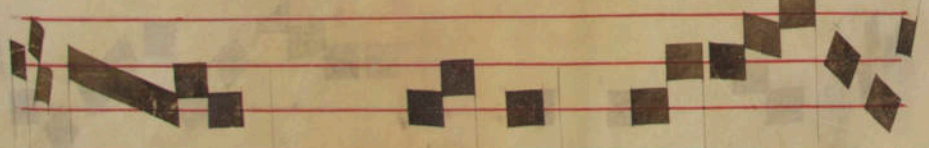


æ



his:cia

mu



s qui aue

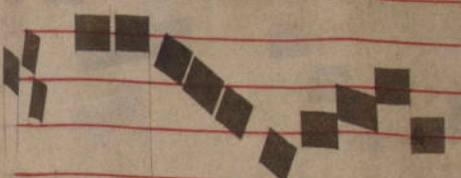




rus est



testimoni us e




Iu

s. Off.



us



stus ut

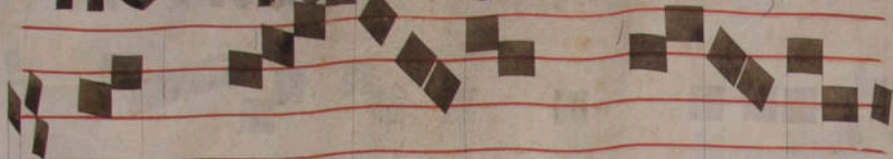


palma

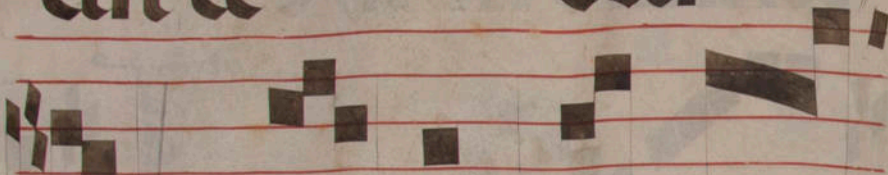




fio re bi tti



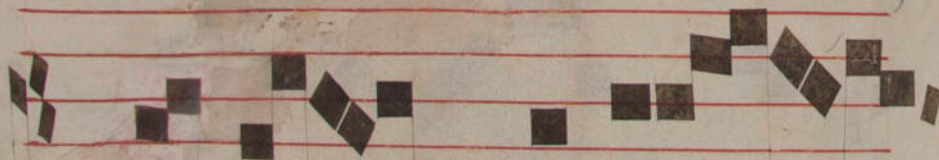
cut ce du



sque in li ba



no e it



multi plica

bitu

r. Cō.

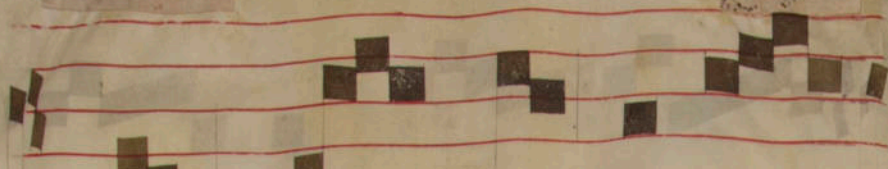


Et it

sermo inter fra tres

q' discipulus i lle

no n moxi tur et



nondi xat ielū



sno n mozi tur:



sed sic usuo loma



ne it do ne



cueni

*In festo  
scōrino*

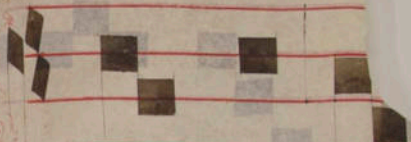
*℞. cētus. Int.*



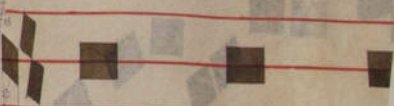
uerſa t



ri a pa



lo rubamen.



Hum



stra

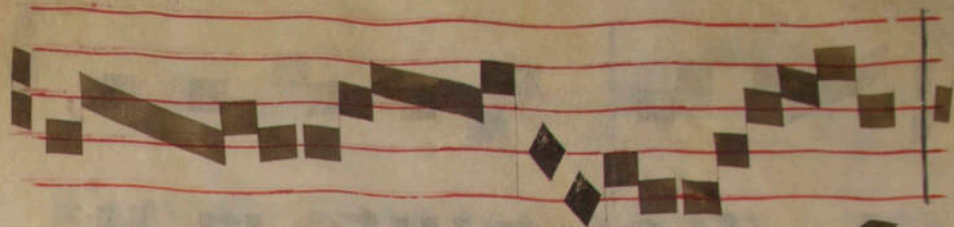
rep

que o

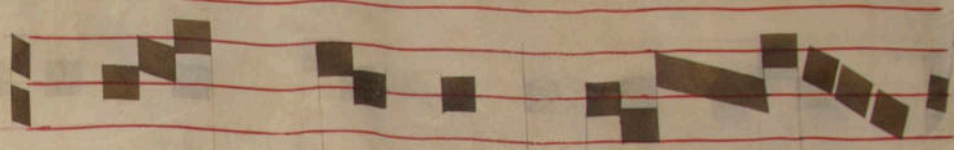
na dunt u

m. **vs.**

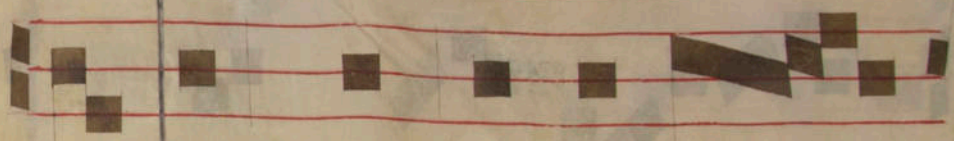
ic u



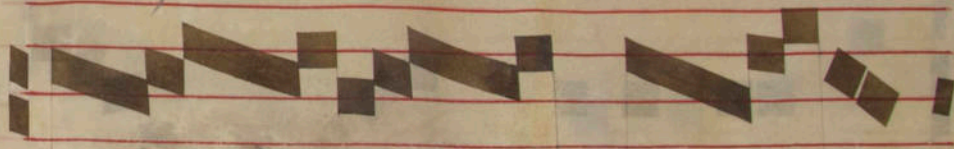
S



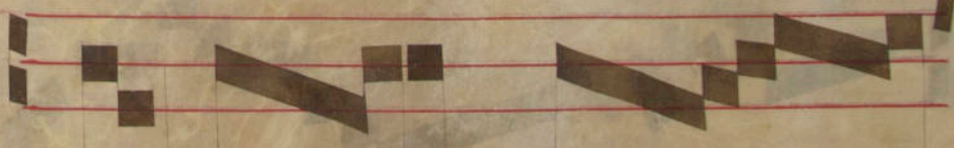
co ntri tus e



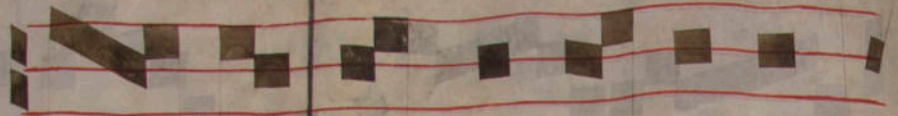
st et nos libera



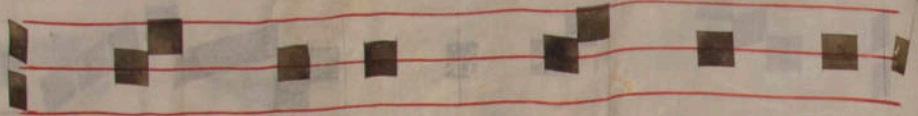
ti



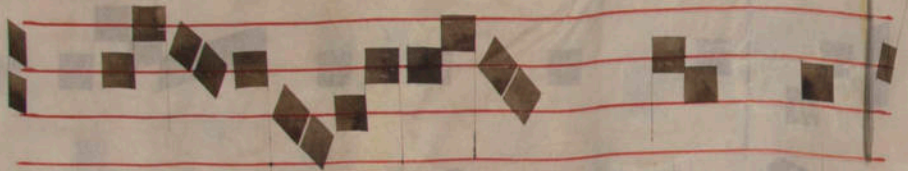
tu mu



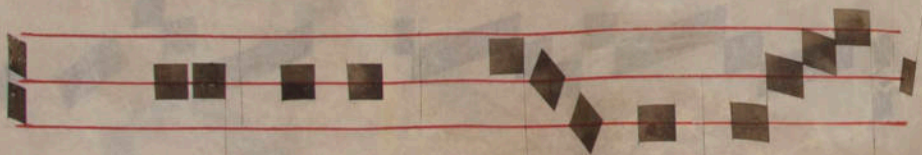
S: ad iuto n ub



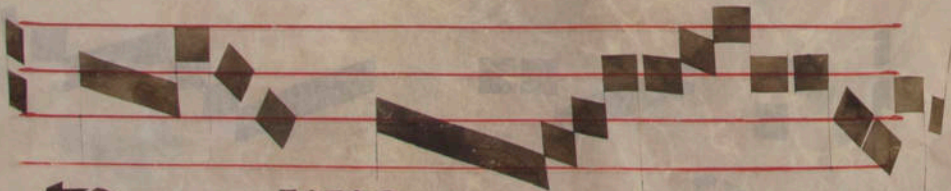
nostru in no mine



do mi ni



qui fecit ce lue t



te ra



san

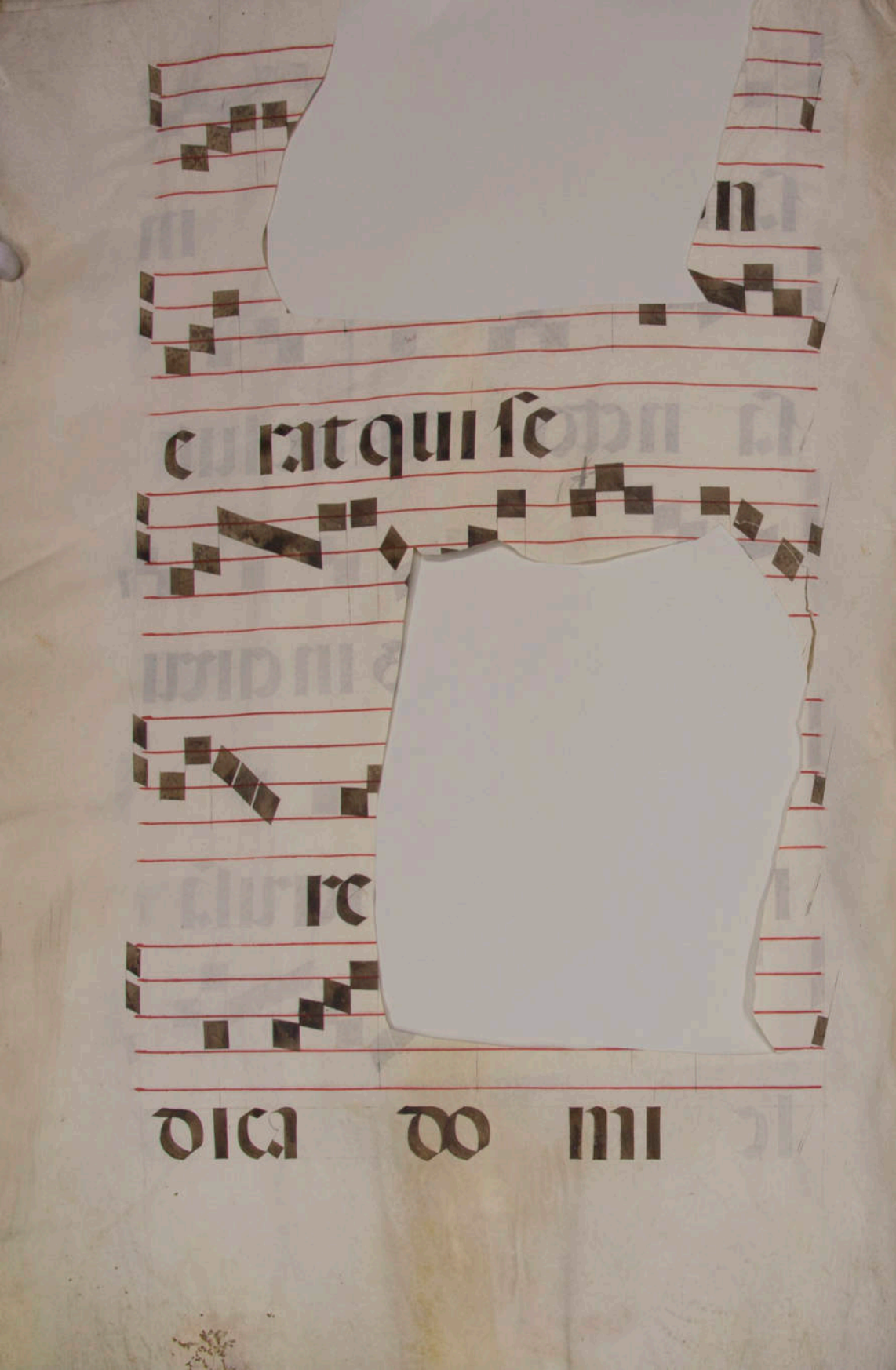
in

sancto rubuc lut

in arcu

ierusa

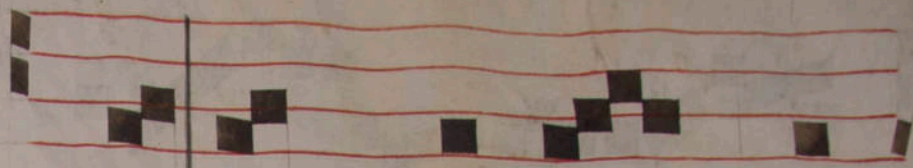
le



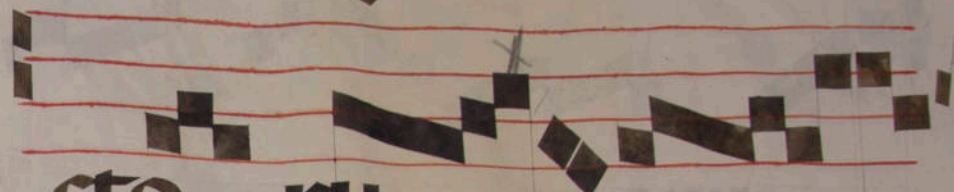
e rat qui se

re

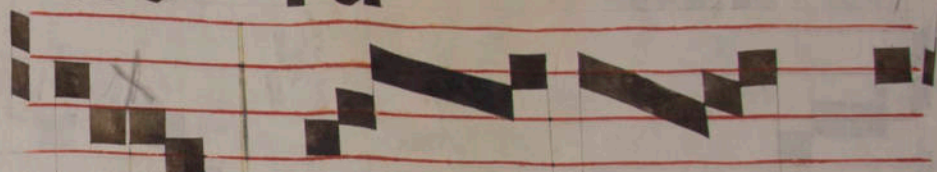
dica do mi



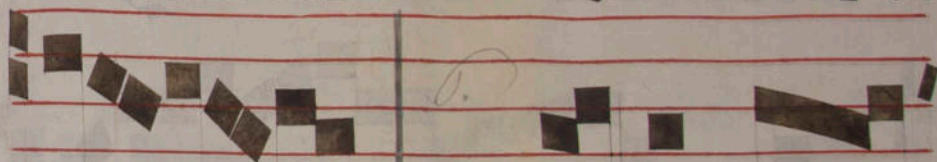
ne sanguine in san



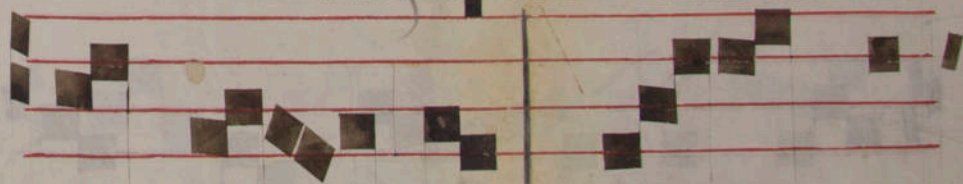
cto ru



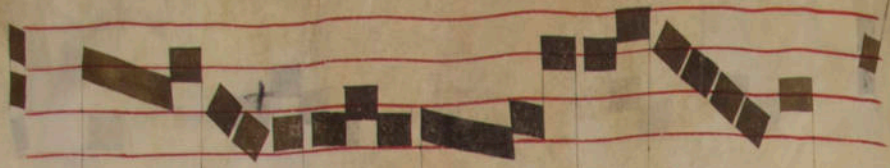
in tu o ru



in qui est



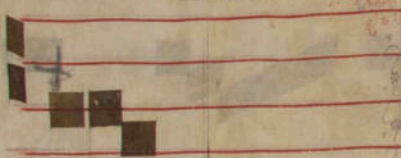
su s est su per



te



ra



m. Off.

ni



mano



trasi

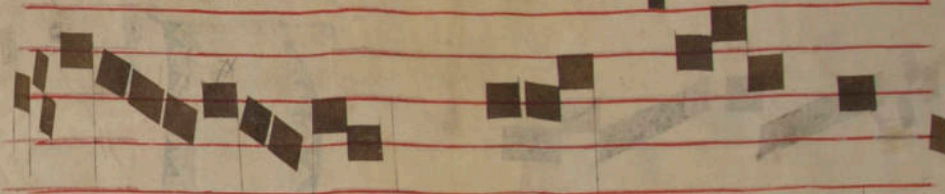
cut pa



ne recepta e



st de la que o



ue nanti



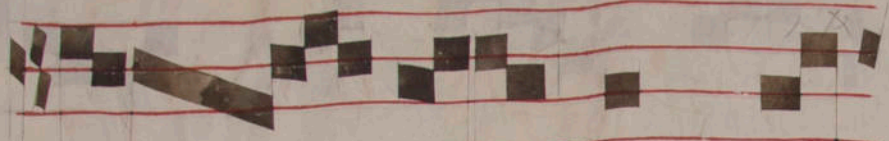
u m la que us



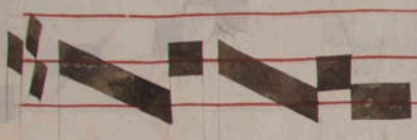
con tritu s est o l t



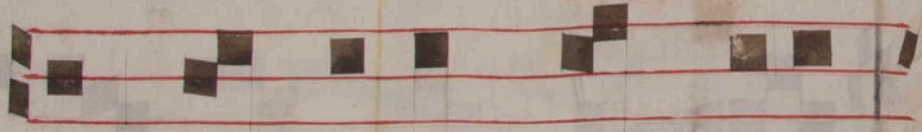
no s li bera



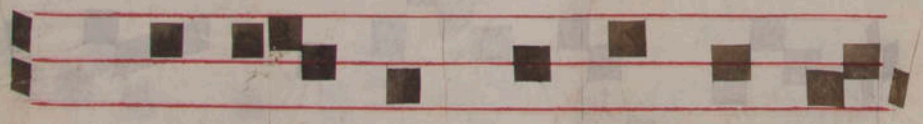
ti sumu



s, Cò, De



inramaudi ta est



plora tus et ulula

no

mc

ma

passi o

ne ga u

dent

li etc

te iusti in domino:

lauda

et in:



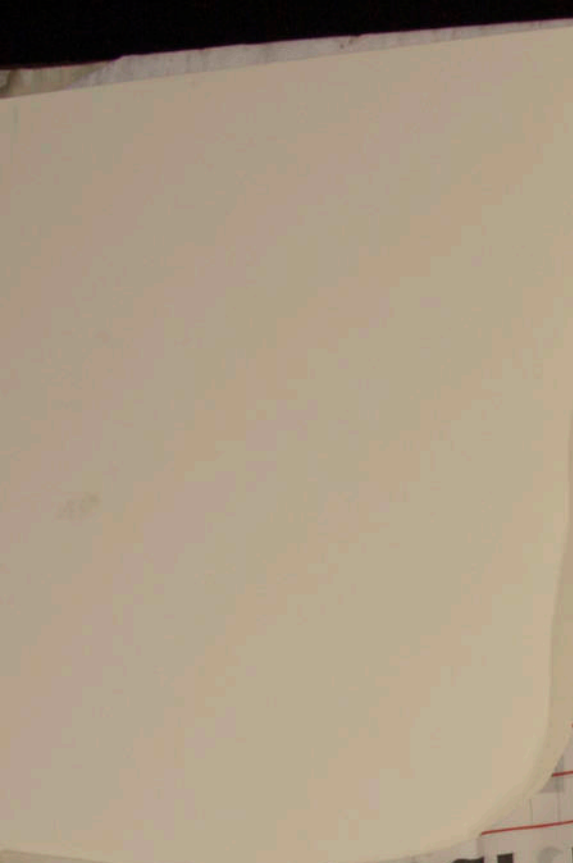
patri et fi

tu i san

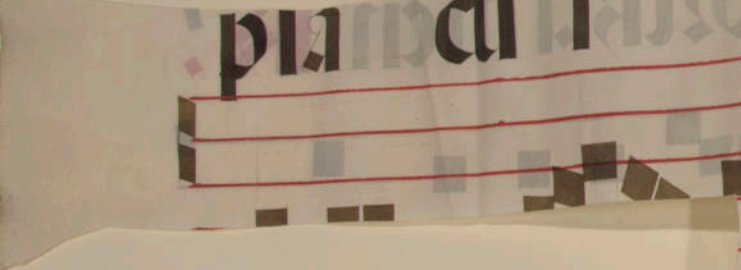
cu lozus amen. **IK** :



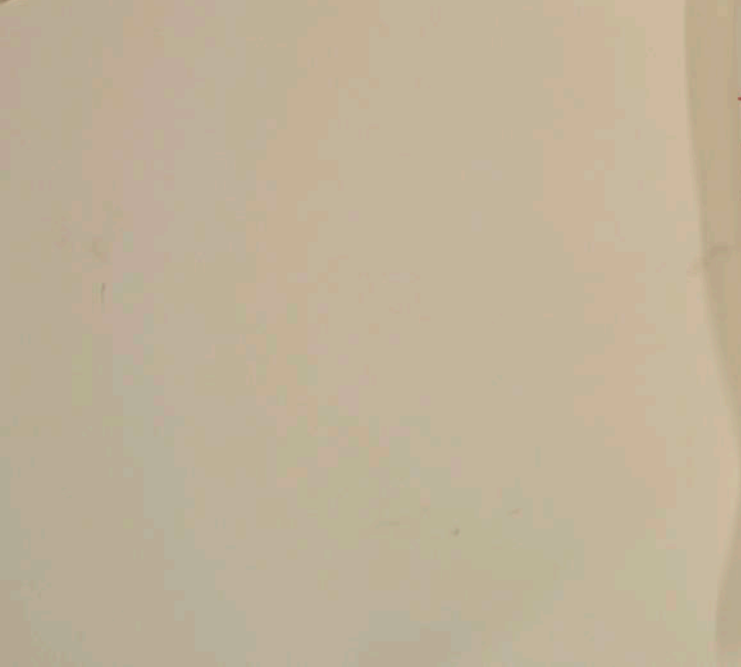
ma th



Fragment of a medieval manuscript page showing musical notation on red staves. The notation consists of black square neumes. Faint, mirrored text is visible through the paper from the reverse side.



Fragment of a medieval manuscript page showing musical notation on red staves. The text **placui** is clearly visible in a black Gothic script. The notation consists of black square neumes. Faint, mirrored text is visible through the paper from the reverse side.



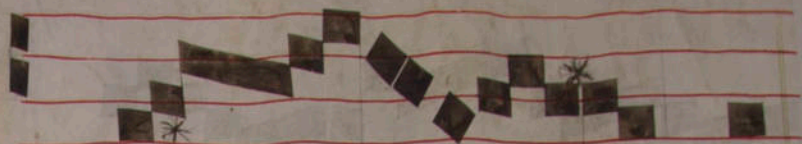
Fragment of a medieval manuscript page showing musical notation on red staves. The text **st in** is clearly visible in a black Gothic script. The notation consists of black square neumes. Faint, mirrored text is visible through the paper from the reverse side.

uentus f

מחול

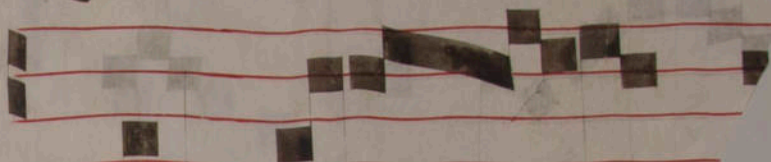
אנא.

The image shows a fragment of a musical score on a five-line staff with red lines. The score is partially obscured by a large white tear on the left side. The visible text includes Hebrew words 'מחול' and 'אנא.' The musical notation consists of black rectangular notes and stems on the staff. The paper is aged and yellowed.

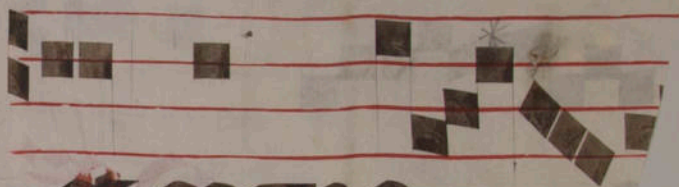


go

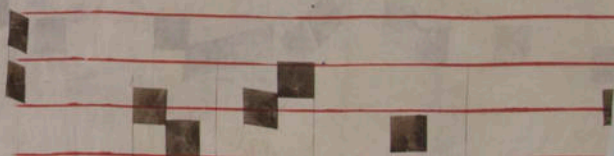
lu



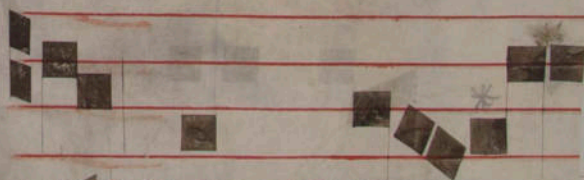
stor bo



et cogno



seo o ues m



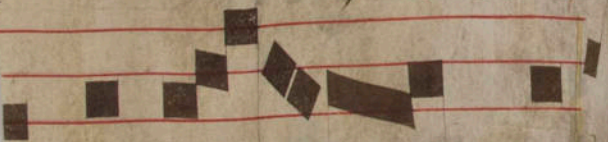
et cogno



scit me



**ff.**



su i su,



mi ne in



ca



plte eius co ro



na mæ lapide



pc

ci it




ate,




tribuisti ei. alle



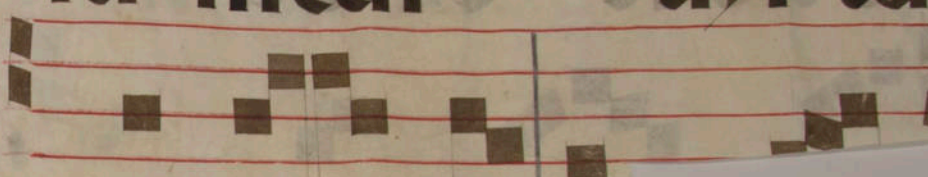




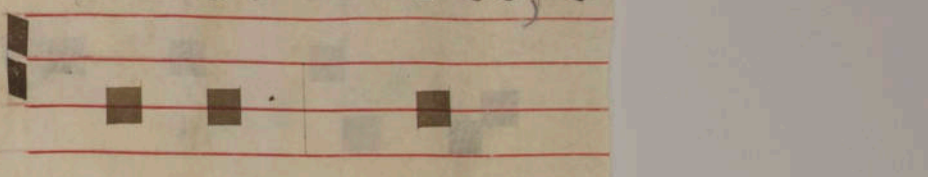
et no x in su o cur



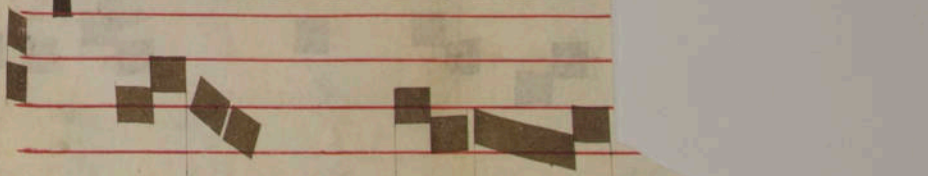
su medi us i ter



habe ret o



potens serm



do mi ni o ne do

ce li sa re ga li

bus se di bu

nit . **v** .

mi nus regni

uit de co rem induit

est: induitus est do

minus fortitudines

at se .v. :

a patri

et fili o et spiri tu

**S**ancto : cu

loribus amen **GR.**



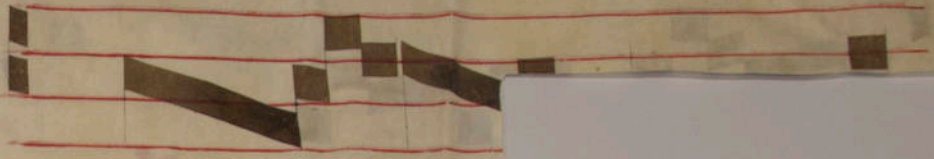
Deo

fo

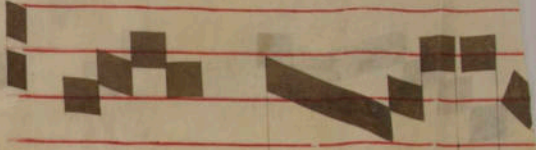
pre illi



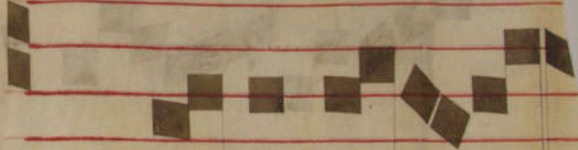
li is ho me mi



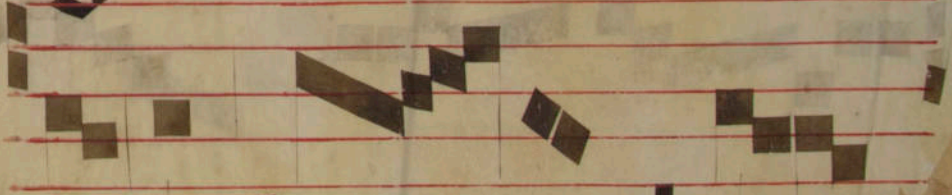
nu



fa



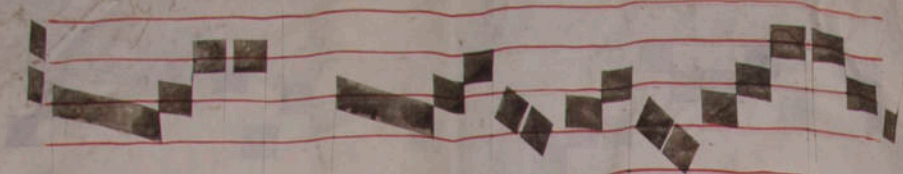
gra ti a



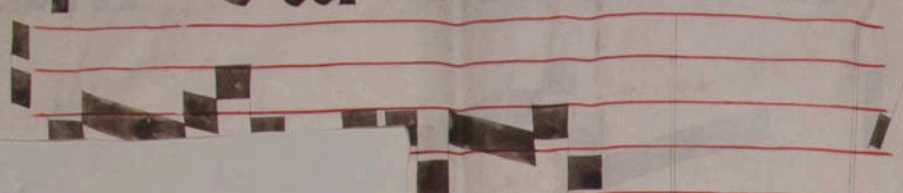
in la

bi

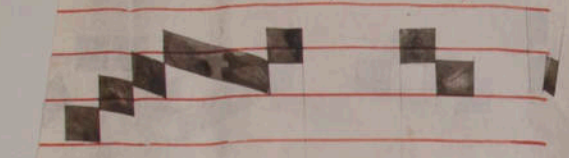




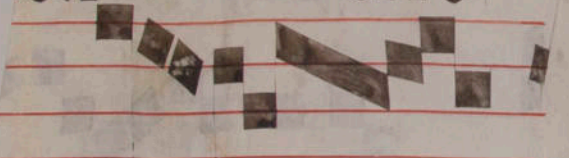
stu



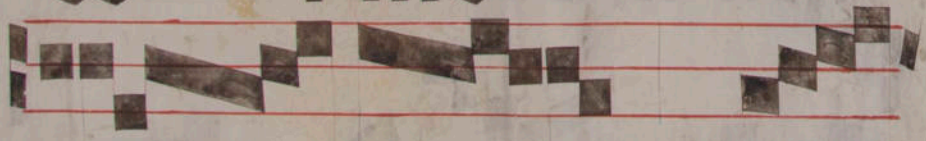
s. v.



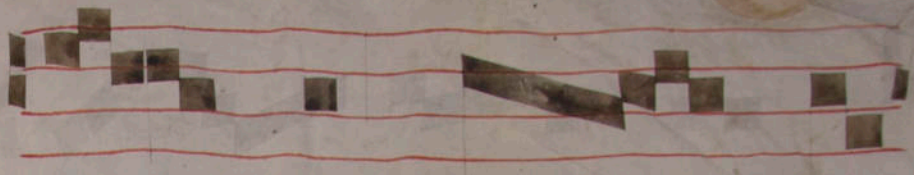
ta uit



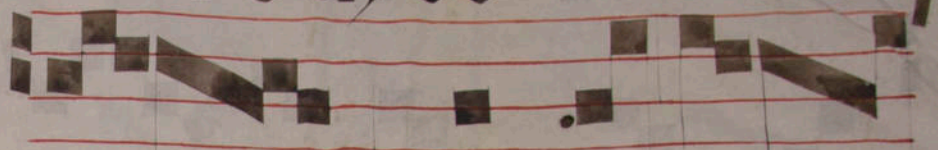
co rme



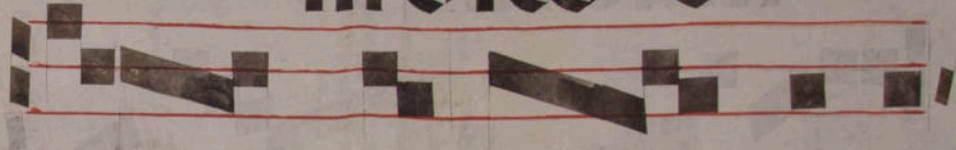
u m ue



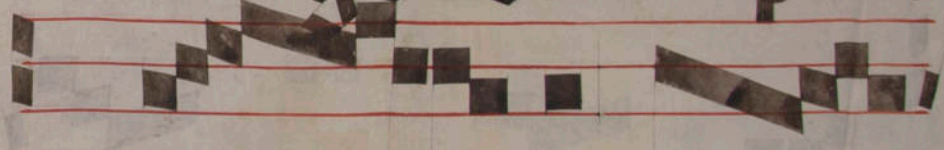
rbur; bo nu



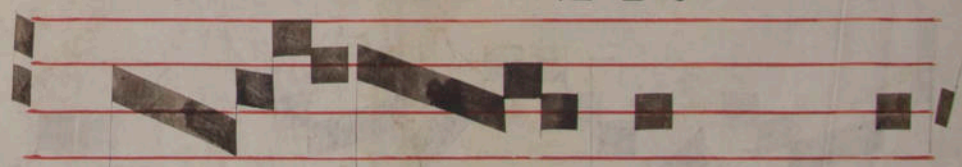
indico e



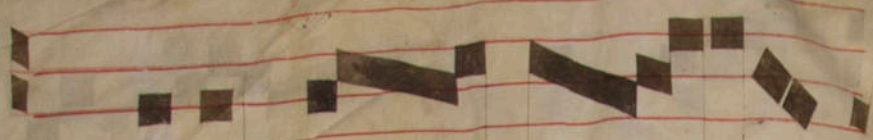
go o pera



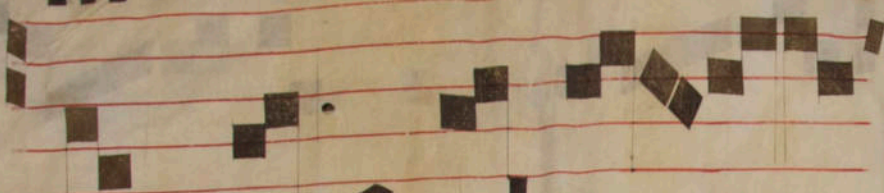
me a re



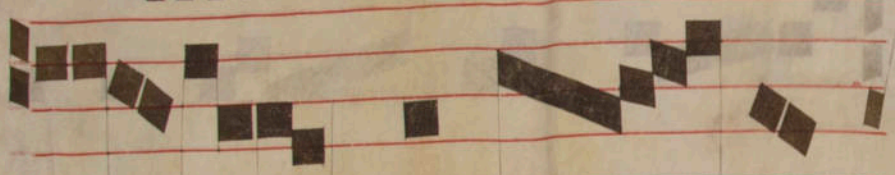
gi lingua



me a ca la



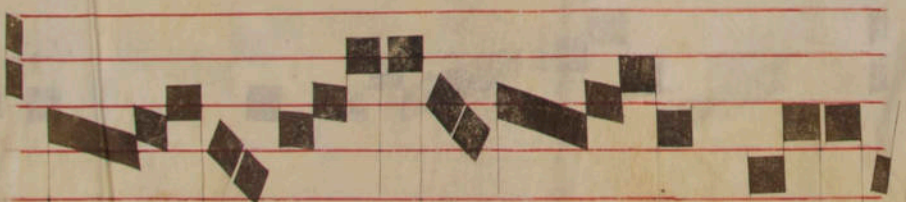
mus feri be



uelo



a te r feri be



nti



le puerus, et ma

tres eius, et uia de

in terra in uia el

defuncti sunt e in m

animas sumptu

In festi siluestri p. p. 79 f.

Quere in comuni unis conf. Si festus sci  
siluestri i dñica uenient Offiū sit de eo et omō  
de dñica et de octi. In octi n̄tis dñi. Antoi.  
¶ Quer natus est nobis. ¶ Viderūt omnes.

175  
**A**

Alidu

va.

pha ipol r c o

limæ

us loquē

pa trib<sup>9</sup> in pzo

phx

si me d

i his locu tur

est no

bis in fi li o



vice la

te elevs

levs.

melex

levson



ict.

mus deus sab

nifunt

coeli et terrae gloriati

in excelsis:--

edictis q̄ venit

no diez oim q̄ mūdoz  
creditis. uel quo resur  
s cōditoz. nos morte  
t **P**ulsis. p̄cul torpori  
s oēs oēs. et nocte q̄  
cut p̄phetā nouimus  
res ut. audiat. suāq;  
ngat. et expiatos sor  
dit poloꝝ sedibz **U**t q̄  
fimo huius diei t̄p̄e. ho  
psallimz donis beatis  
**I**am nūc pat̄na clari  
tulimz. affati. absit li  
dois oisq; actz noxiuz  
sit ul' lubrica cōpago  
ris. per quā auerni igb'  
m̄. acris **O**b hoc redēptoz  
pbz. n̄a diluas. uite p̄

Dom. adve  
tousq[ue] epiph.  
exclusi

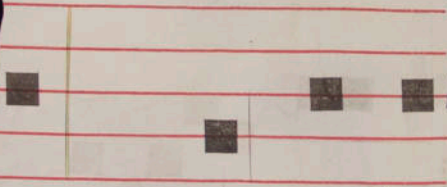




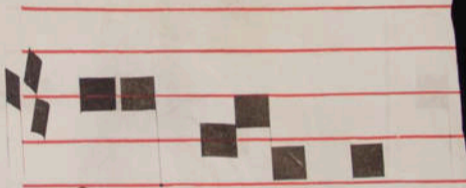


bel intend

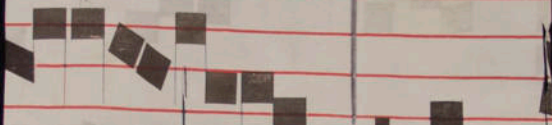




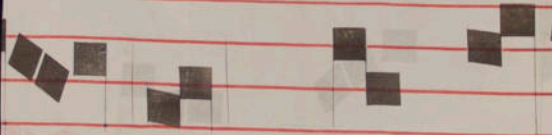
le: qui tædu



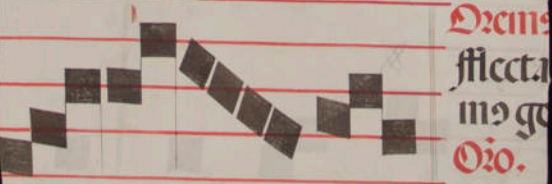
fā cū cū em



in ben



netmana



**Oratio**  
fflecta  
mo go  
**Oro.**

Adrecc  
popli



de us pa tru



stro ru m. **1**



da bi lis et