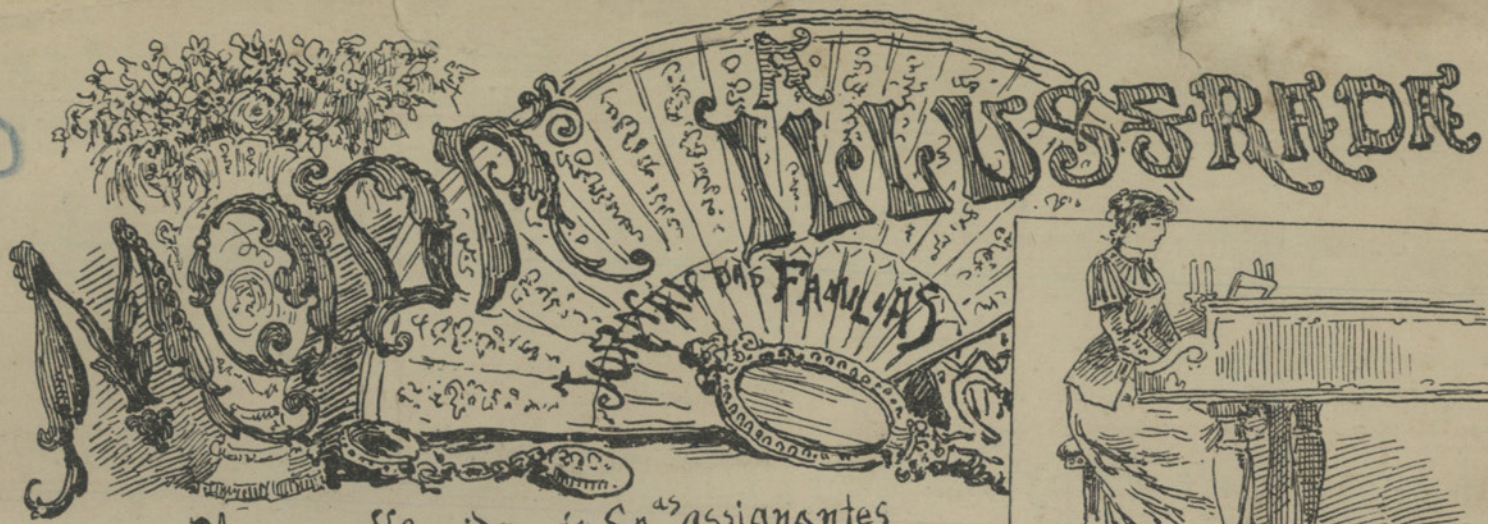


CN
940



Musica offerida ás Sr.^{as} assignantes
da primeira edição com N.º 335

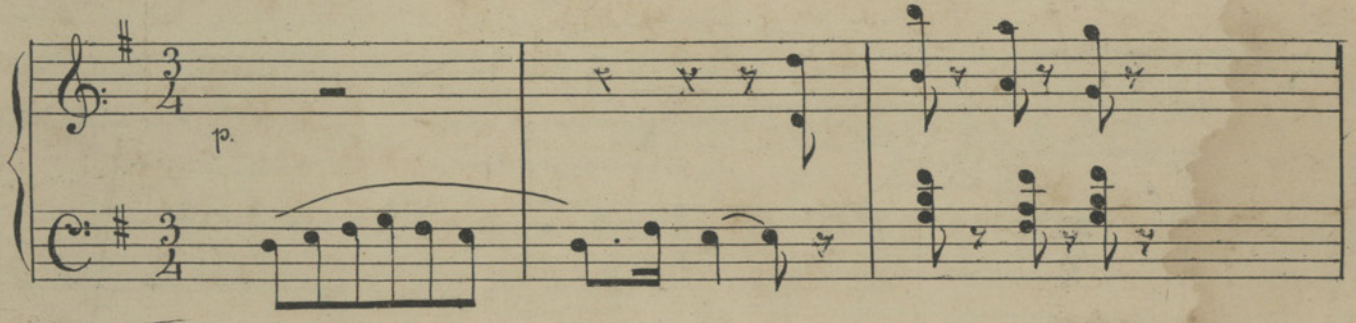
Preço avulso 500 Reis

A D. Maria Carlota da Conceição

SAUDADE

Mazurka por Manoel da Encarnação

And.^{te} mosso



Tempo de mazurka

Handwritten musical notation system 1, consisting of a treble and bass staff. The treble staff features a melodic line with eighth and sixteenth notes, including slurs and accents. The bass staff provides a harmonic accompaniment with chords and moving lines. The system concludes with a double bar line.

Handwritten musical notation system 2, continuing the piece. The treble staff shows a melodic phrase with a repeat sign. The bass staff continues with a steady accompaniment. The system ends with a double bar line.

Handwritten musical notation system 3, featuring a more active treble staff with eighth-note patterns. The bass staff maintains a consistent accompaniment. The system concludes with a double bar line.

Handwritten musical notation system 4, showing a melodic line in the treble staff with various ornaments and slurs. The bass staff continues with a supporting accompaniment. The system ends with a double bar line.

Handwritten musical notation system 5, with a treble staff containing a melodic line and a bass staff with a steady accompaniment. The system concludes with a double bar line.

Handwritten musical notation system 6, the final system on the page. The treble staff features a melodic line with a final cadence. The bass staff provides a concluding accompaniment. The system ends with a double bar line.

First system of handwritten musical notation, consisting of a treble and bass staff with various notes and rests.

Second system of handwritten musical notation, continuing the piece with similar notation.

Third system of handwritten musical notation, featuring tempo markings "poco rit" and "a tempo".

Fourth system of handwritten musical notation, showing melodic and harmonic development.

Fifth system of handwritten musical notation, ending with a double bar line.

Segue à Coda

Coda

Coda section of handwritten musical notation, featuring a treble and bass staff with a final cadence.