

Do Ex.^{mo} Sr. D. Manuel Pereira Cardoso.

Seus

Estudos para flauta

extrahidos do Método de Drouet

com acompanhamento

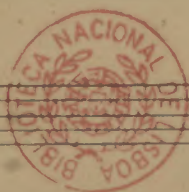
de

PIANO

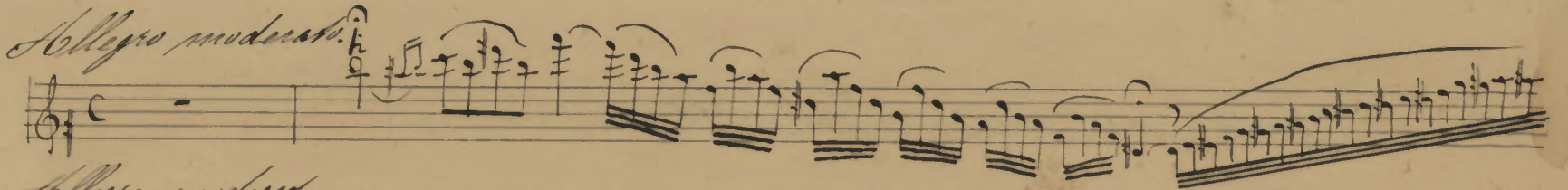
compuesto por

E. Vieira.

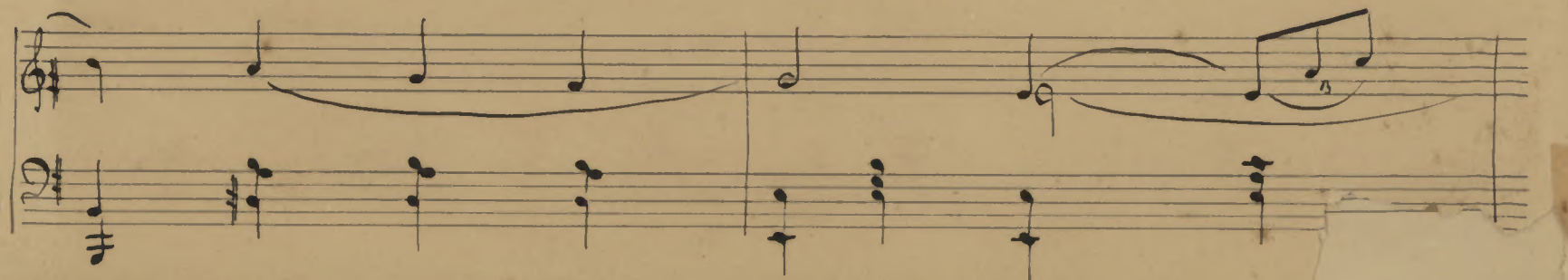
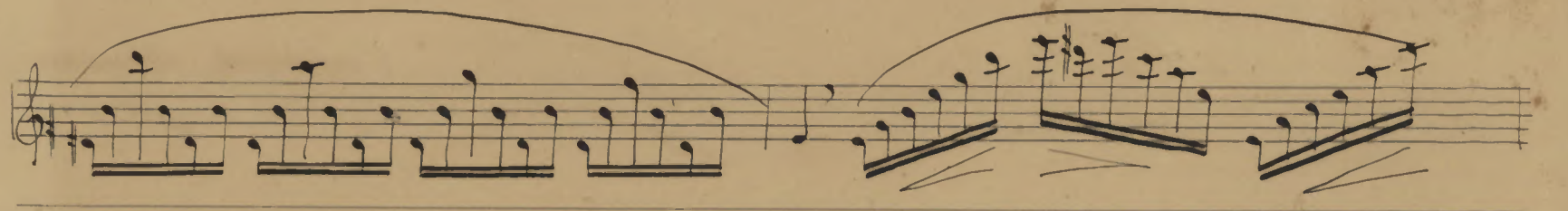
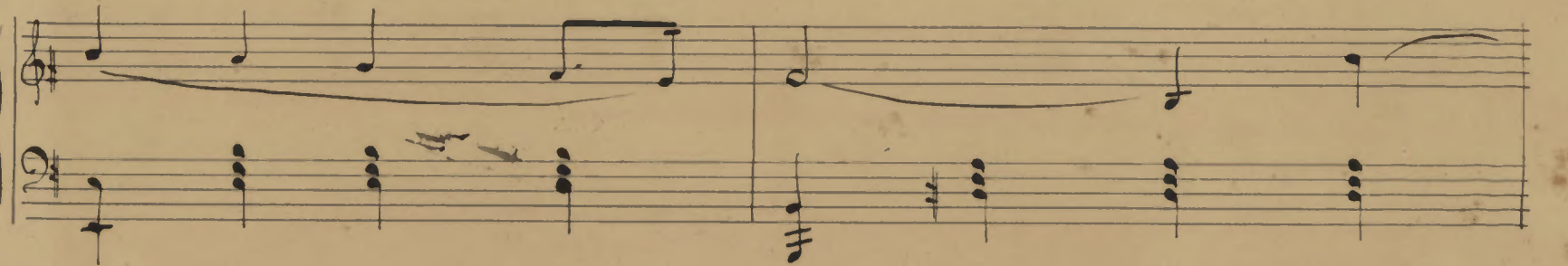
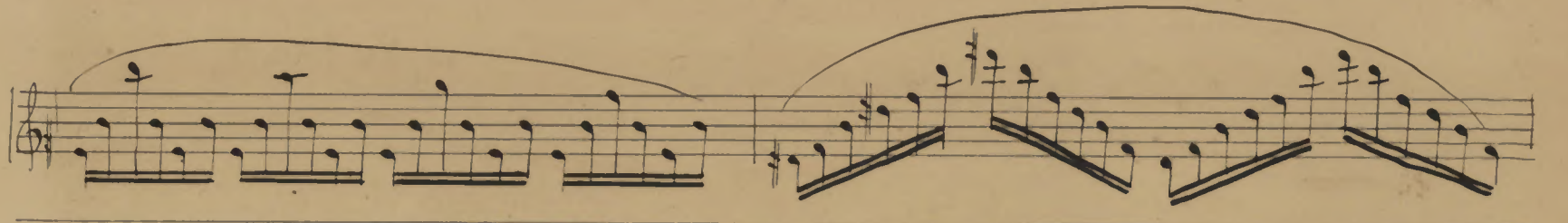
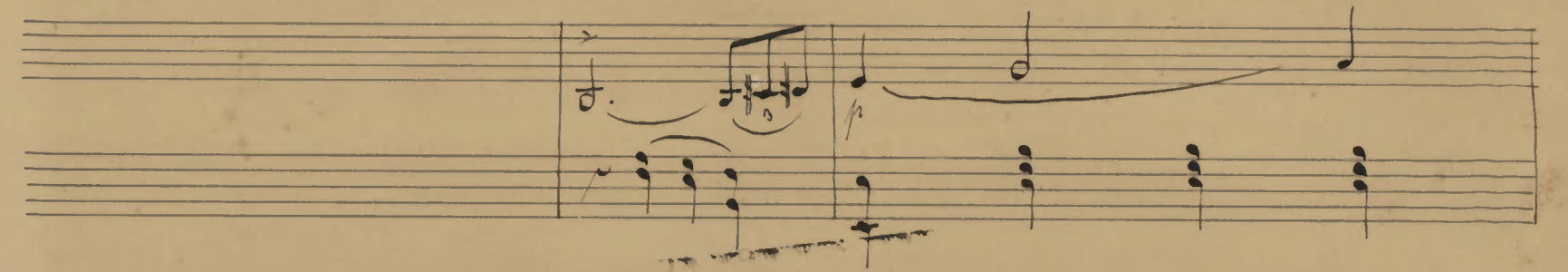
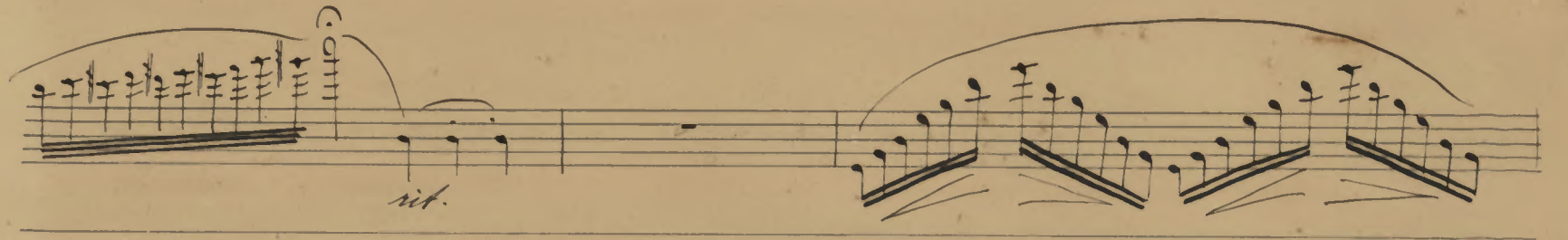
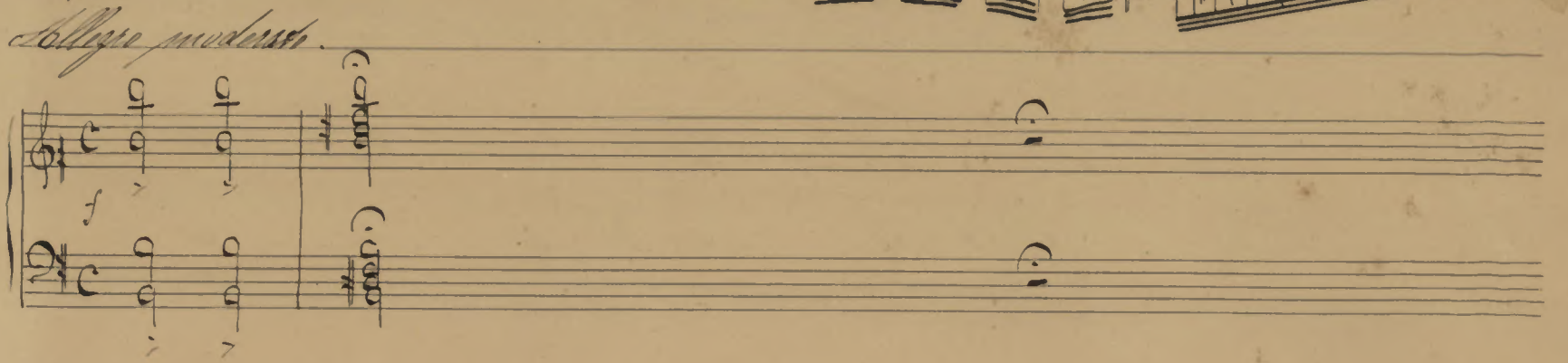
NCB-1003046



Allegro moderato.



Allegro moderato.



Handwritten musical notation for the first system, featuring a single treble clef staff with a long, sweeping melodic line.

Handwritten musical notation for the second system, consisting of two staves (treble and bass clefs) with chords and a triplet of eighth notes.

Handwritten musical notation for the third system, featuring a single treble clef staff with a long, sweeping melodic line.

Handwritten musical notation for the fourth system, consisting of two staves (treble and bass clefs) with chords and a melodic line.

Handwritten musical notation for the fifth system, featuring a single treble clef staff with a long, sweeping melodic line.

Handwritten musical notation for the sixth system, consisting of two staves (treble and bass clefs) with chords and a melodic line.

Handwritten musical notation for the seventh system, featuring a single treble clef staff with a long, sweeping melodic line.

Handwritten musical notation for the eighth system, consisting of two staves (treble and bass clefs) with chords and a triplet of eighth notes.

Handwritten musical notation on a single staff, featuring a melodic line with slurs and trills.

Handwritten musical notation on two staves (treble and bass clef), including a triplet in the treble staff.

Handwritten musical notation on a single staff, featuring a melodic line with slurs and a *cresc.* marking.

Handwritten musical notation on two staves (treble and bass clef), featuring a melodic line with slurs and a *dim.* marking.

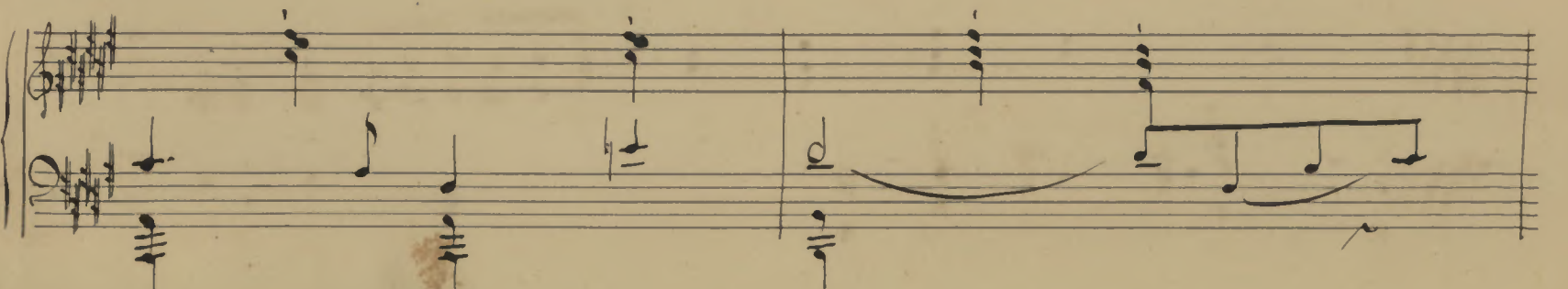
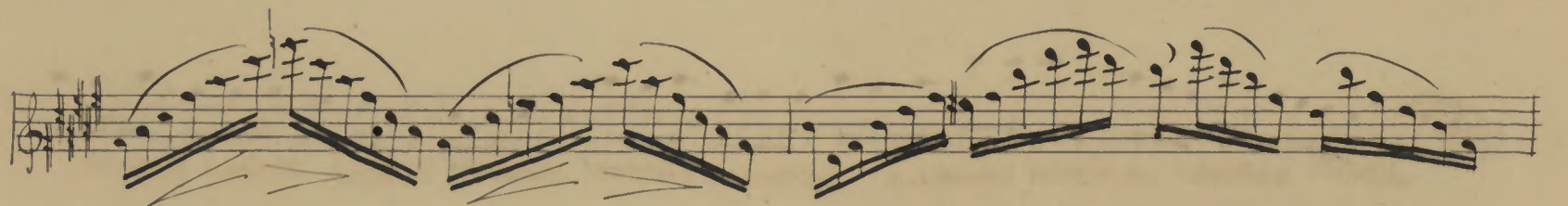
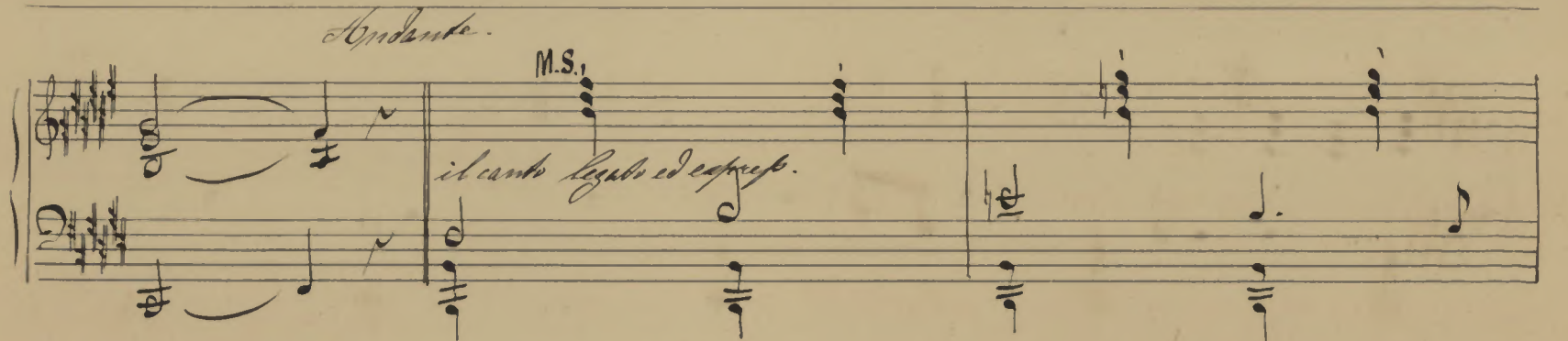
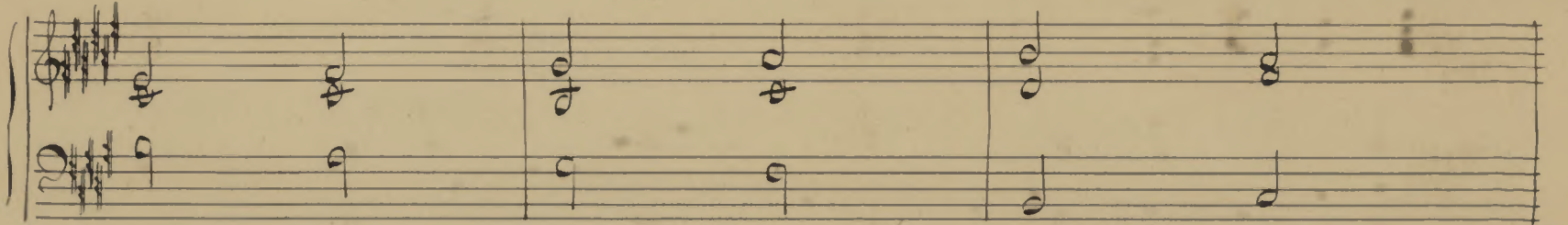
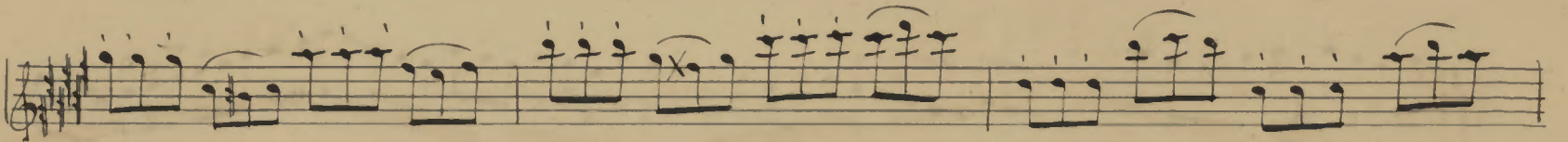
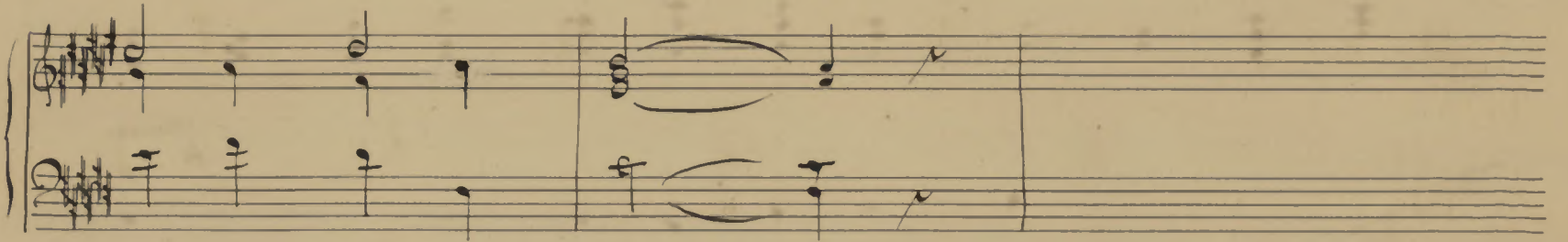
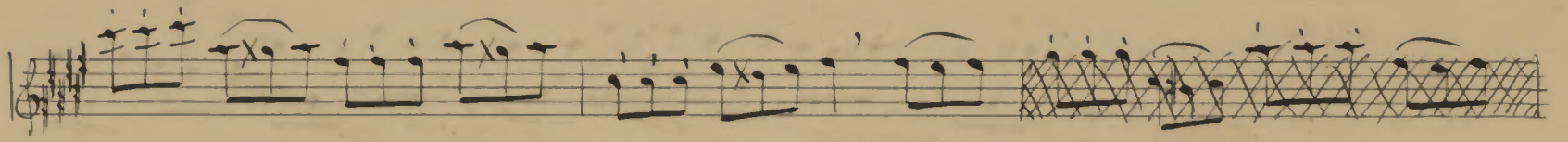
Handwritten musical notation on a single staff, featuring a melodic line with slurs and *dim.* and *cresc.* markings.

Handwritten musical notation on two staves (treble and bass clef), including a triplet in the treble staff.

Handwritten musical notation on a single staff, featuring a melodic line with slurs and *dim.* and *cresc.* markings.

Handwritten musical notation on two staves (treble and bass clef), including a triplet in the treble staff and a *dim.* marking.

Moderato.



III.

Andante.

A single musical staff in treble clef with a 2/4 time signature. It contains a series of eighth-note patterns, starting with a quarter rest followed by eighth notes, then a quarter note followed by eighth notes, and finally a quarter note followed by eighth notes with a fermata over the final two notes.

Andante.

Piano accompaniment consisting of two staves. The right hand has long notes and rests, while the left hand has a similar pattern. The music is in a 2/4 time signature and a key signature of two flats.

A single musical staff in treble clef with a 2/4 time signature. It contains eighth-note patterns, including a quarter rest followed by eighth notes, a quarter note followed by eighth notes, and a quarter note followed by eighth notes with a fermata over the final two notes.

Piano accompaniment consisting of two staves. The right hand has long notes and rests, while the left hand has a similar pattern. The music is in a 2/4 time signature and a key signature of two flats.

A single musical staff in treble clef with a 2/4 time signature. It contains eighth-note patterns, including a quarter rest followed by eighth notes, a quarter note followed by eighth notes, and a quarter note followed by eighth notes with a fermata over the final two notes.

Piano accompaniment consisting of two staves. The right hand has long notes and rests, while the left hand has a similar pattern. The music is in a 2/4 time signature and a key signature of two flats.

A single musical staff in treble clef with a 2/4 time signature. It contains eighth-note patterns, including a quarter rest followed by eighth notes, a quarter note followed by eighth notes, and a quarter note followed by eighth notes with a fermata over the final two notes.

Piano accompaniment consisting of two staves. The right hand has long notes and rests, while the left hand has a similar pattern. The music is in a 2/4 time signature and a key signature of two flats.

Handwritten musical notation on a single staff, featuring a complex melodic line with many beamed notes and slurs.

Handwritten musical notation on two staves, showing a piano accompaniment with chords and single notes.

Handwritten musical notation on a single staff, featuring a complex melodic line with many beamed notes and slurs.

Handwritten musical notation on two staves, showing a piano accompaniment with chords and single notes.

Handwritten musical notation on a single staff, featuring a complex melodic line with many beamed notes and slurs.

Handwritten musical notation on two staves, showing a piano accompaniment with chords and single notes.

Handwritten musical notation on a single staff, featuring a complex melodic line with many beamed notes and slurs.

Handwritten musical notation on two staves, showing a piano accompaniment with chords and single notes.

A single staff of handwritten musical notation in a treble clef. The key signature has two flats (B-flat and E-flat). The music consists of a continuous sequence of eighth and sixteenth notes, many of which are marked with an accent (>). The notation is dense and appears to be a melodic line.

A grand staff of handwritten musical notation. The upper voice (treble clef) contains several chords, primarily triads and dyads, with some slurs. The lower voice (bass clef) contains a simple bass line with quarter and eighth notes. The key signature is consistent with the first system.

A single staff of handwritten musical notation, continuing the melodic line from the first system. It features similar rhythmic patterns of eighth and sixteenth notes with accents, ending with a double bar line.

A grand staff of handwritten musical notation, continuing the chordal accompaniment from the second system. It shows chords in the upper voice and a bass line in the lower voice, ending with a double bar line.

A series of ten empty musical staves, arranged vertically, occupying the lower half of the page. They are blank, with no notation present.

